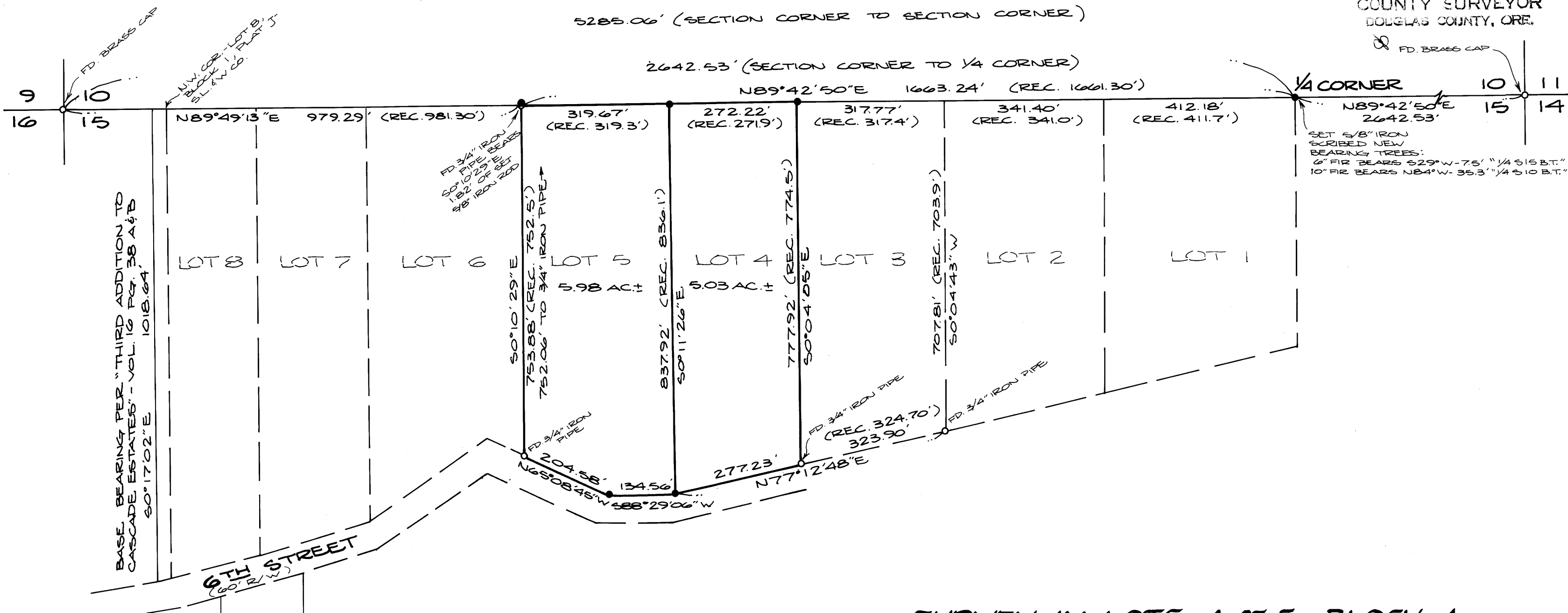


FILED &
RECEIVED &

AUG 15 1980

COUNTY SURVEYOR
DOUGLAS COUNTY, ORE.

FD. BRASS CAP



SET 5/8" IRON
SCRIBED NEW
BEARING TREES:
6" FIR BEARS S29°W-75' 1/4 S 15 B.T.
10" FIR BEARS N84°W-35.3' 1/4 S 10 B.T.

CASCADE
ESTATES
3RD ADDITION

Scale: 1" = 200'
June 1980

Legend:

- - SET 5/8" x 30" IRON ROD
- - FOUND MONUMENT AS NOTED

Narrative:

SURVEY TO MONUMENT LOTS 4 & 5, BLOCK ONE, PLAT "J", S.L. & W. FOR RECORD MEASUREMENTS SEE PLAT "J." LOT LINES WERE DETERMINED BY PROPORTIONMENT BETWEEN THE NEAREST FOUND CORNERS. THE NORTH 1/4 CORNER OF SECTION 15, WAS SEARCHED FOR, BUT NOT FOUND, AND WAS SET AT ITS PROPORTIONED LOCATION. SURVEY CREW CONSISTED OF GREG LANG AND MARK LUEDECKE. COMPUTATIONS BY ROMNEY WARE. DRAFTING BY DEBBIE HOPKINS. FIELD EQUIPMENT CONSISTED OF LEITZ THEODOLITE AND MAC I-E E.D.M. REFERENCE SURVEYS ARE M71-52, M1-15, M63-32, M75-66, M2-53, "THIRD ADDITION TO CASCADE ESTATES," AND "PLAT 'J', S.L. & W. CO."

SURVEY IN LOTS 4 & 5, BLOCK 1,
PLAT "J", SUTHERLIN LAND
& WATER CO., LYING IN NW 1/4,
SECTION 15, T25S, R5W, W.M.

For: Revestco

By: BHW Engineering & Surveying, Inc.

1205 SE COURT ROSEBURG, ORE. 97470
PHONE: 673-0165

REGISTERED
PROFESSIONAL
LAND SURVEYOR

Romney E. Ware

OREGON
NOV 16 1979
ROMANSO E. WARE
1005

COUNTY SURVEYORS FILE DATA
DO NOT REMOVE FROM OFFICE

MAP FILE M.85-3

MAP FILE M.85-3