

SURVEY FOR GEORGE E. & JANICE E. LANEY

S $\frac{1}{2}$ SE $\frac{1}{4}$ S27. T29S, R9W, WM

APRIL 26, 1975

Scale: 1"=500'

FILED &
RECEIVED

SEP 3 1980

COUNTY SURVEYOR
DOUGLAS COUNTY, ORE.

MAP FILE M85-20

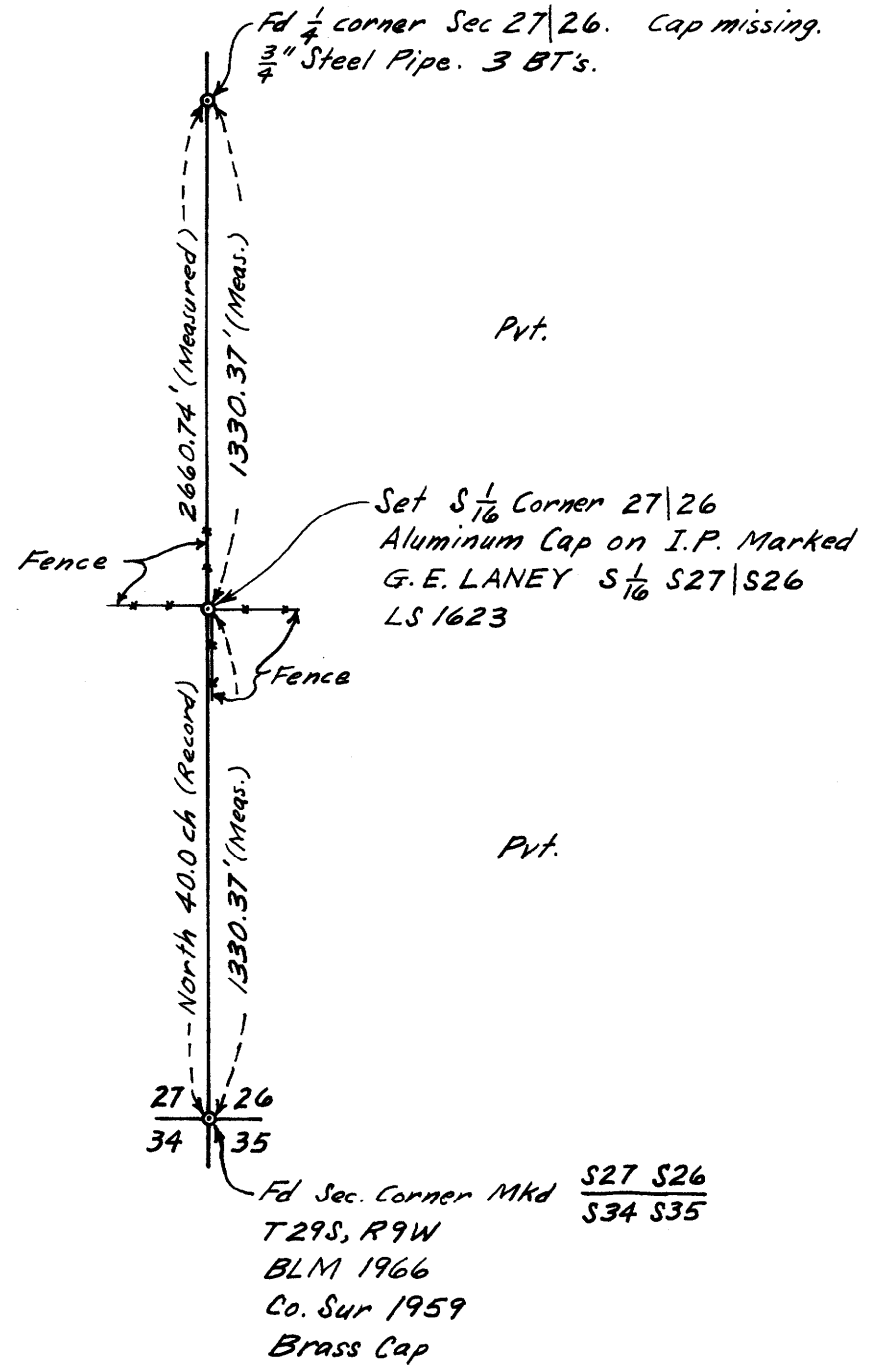


U.S.

Pvt.

Pvt.

Pvt.



REFERENCES: GLO Field Notes.

NARRATIVE: From $\frac{1}{4}$ corner ran random line southerly to section corner. Corrected to true. Set $\frac{5}{8}$ " I.R. for $\frac{1}{16}$ corner at $\frac{1}{2}$ distance. George E. Laney, P.O. Box 135, Yreka, CA OR PE 7516
August 27, 1980
Replaced $\frac{5}{8}$ " I.R. with AC marked as shown on $\frac{3}{4}$ " x $35\frac{1}{2}$ " I.P. George E. Laney, P.O. Box 225, Camas Valley, OR

MAP FILE M85-20

George E. Laney

REGISTERED
PROFESSIONAL
LAND SURVEYOR

George E. Laney

OREGON
JULY 14, 1978
GEORGE E. LANEY
1623