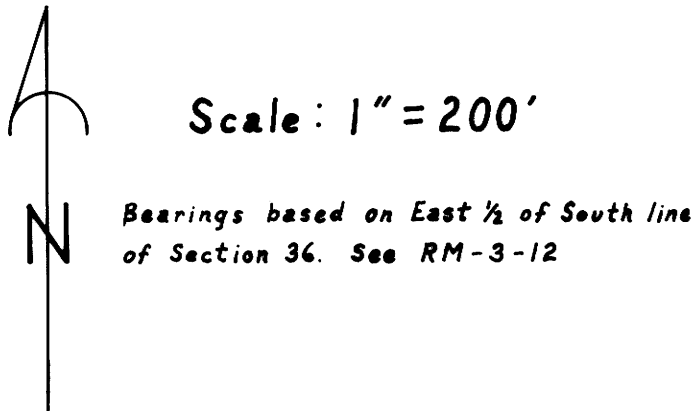


Subdivision of SE 1/4 of Section 36, T29S, R6W, W.M.
For Roseburg Lumber Company August 5, 1980

FILED &
RECEIVED
SEP 2 1980

COUNTY SURVEYOR
DOUGLAS COUNTY, ORE.

- Legend**
- ⊙ Found Brass Cap on Iron Pipe
 - Found Aluminum Cap on Iron Rod
 - Set Aluminum Cap on Iron Rod
 - Found Iron Rod
 - Subdivision Line
 - Line Marked by Steel Fence Posts



I ran a closed traverse in Section 36 using a Jena I second theodolite and a Mac I-E EDM. I achieved a precision of 1:17,300 and adjusted by the Crandall method. I set the SE 1/4 Corner by standard subdivision procedure based on the location of the existing monuments. Roseburg Lumber Company owns all of the land delineated on this plat and all adjacent lands except those in Section 1 owned by Jim Lewis. Howard W. Johnstone P.O. Box 1088 Roseburg, Oregon

REGISTERED
PROFESSIONAL
LAND SURVEYOR

Howard W. Johnstone
OREGON
MA 3 1960
HOWARD W. JOHNSTONE
498

