

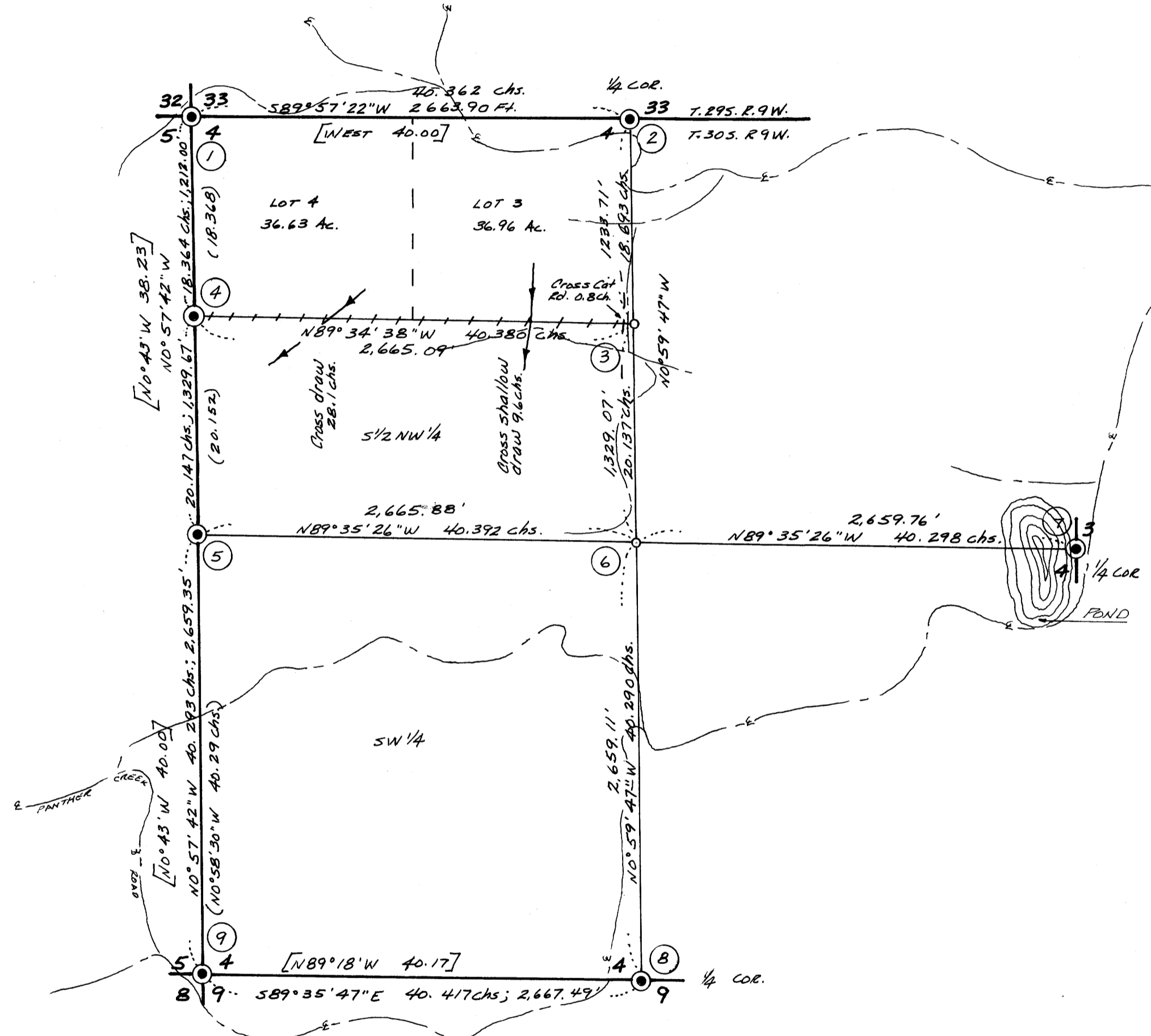
SUBDIVISION SECTION 4, T. 30 S., R. 9 W., W.M., DOUGLAS CO., OREGON

SURVEY FOR:
DEPARTMENT OF THE INTERIOR
BUREAU OF LAND MANAGEMENT, D-553A
BLG. 50, DENVER FEDERAL CENTER
DENVER, CO. 80225
RE: CONTRACT YA-553-CTO-93
ITEM IG

SURVEY BY:
STUNTZNER ENGINEERING & FORESTRY
P.O. BOX 118-375 PARK, COOS BAY, ORE.
PH. (503-267-2872)

CORNER NOTES:

- ① Found B.C.I.P. set by County Surveyor in 1964, marked "County Surveyors Office 532/533 54/54 1964", from which: original 15" Hem, now 24" N74°W 25.7' (Record 39 lks.); original 36" D.F. Now 54" S32°W 12 lks.; 1964 BT 17" Hem. N12°E 28.8'; 1964 BT 9" Hem. S22°W 26.9'.
- ② Found 1/2" B.C.I.P. set by County Surveyor in 1974 at the point for the original 1/4 corner to Sections 33/4, from which: original 36" D.F. stump S32°W 27.8'; original 30" D.F. stump N23°E 20.5'; 1974 BT 11" POC N12°E 14.2'; 1974 BT 12" Hem. N77 1/2°E 16.3'. Cap marked "County Surveyors Office 533/534 59/59 1974".
- ③ At the point of the center-north 1/4 corner, set 2"x2"x36" from which: 28" D.F. S73°E 14.2' (distance to spike); 12" D.F. West 22.9' (distance to spike).
- ④ Found standard BLM 2 1/2" B.C.I.P. at North 1/4 corner to Secs. 5 & 4, set in 1980 by BLM (as of this date, there is no official record) from which: 20" Hem. S40°E 60 1/2 lks. "N 1/6 S4 BT"; 5" Hem. S32°W 33 lks. "N 1/6 S5 BT".
- ⑤ Found standard 2 1/2" B.C.I.P. set by BLM in 1980 at the proportionate point for the 1/4 corner to Secs. 5 & 4 from which: 17" Hem. S79 1/4°W 29 1/2 lks.; 27" Hem. N57°E 39 lks. As of this date there is no official record of this monument.
- ⑥ At the point for the center 1/4 corner of Sec. 4, I set 2"x2"x36" cedar hub, from which: 28" D.F. S18°W 6.9' to spike, 8.0' φ tree; 24" POC S89°E 37.0' to spike, 38.3' φ tree.
- ⑦ The 1/4 corner to Secs. 3 & 4 was perpetuated in its original position by Ben Irving in 1927. Found 1963 County B.C.I.P. marked "County Surveyors Office 1/4 54/53 T305 R9W 1963", from which: 1927 BT 24" stump (D.F.) N26°E 11.8'; other 1927 BT missing; 10" fir stump/tag, no record N19°E 26.0'; 20" W.F. N76°E 28.0' (1963 Co. BT); 1963 Co. BT N27°W 42.1', 15' W.F.; (Record last two BTs is Hem. species).
- ⑧ Found B.C.I.P. set by County in its original position, marked "County Surveyors Office T305 R9W 1/4 34/34 1965" from which: original 16" D.F. stump N62 1/4°W 56 3/4 lks.; 10" D.F. snag (original) S78 3/4°W 39 1/2 lks.; 1965 Co. BT 15" D.F. N54°W 47.0'; 1965 Co. BT 22" D.F. S86°W 40.6'; Tagged, not scribed 38" D.F. N62°W 27'; Tagged, not scribed 28" D.F. Snag N79°E 5'.
- ⑨ Found standard 2 1/2" BLM B.C.I.P. set at the point for the original corner to Secs. 4, 5, 8 & 9, from which: original 35" D.F. stump N83°E 38.5 lks.; down orig. 22" cedar S35 3/4°E 69 lks.; down orig. 18" D.F. S50°W 46 1/2 lks.; down orig. 50" D.F. N36 1/2°W 31 lks.; 1962 BLM BT is down 35" cedar N12 1/2°E 36 lks.

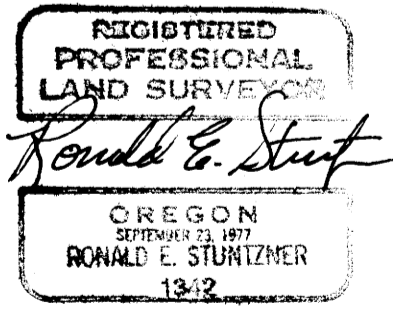
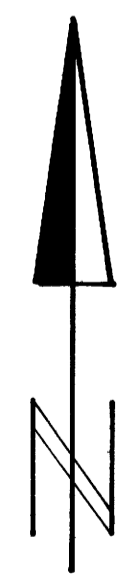


NARRATIVE

The purpose of this survey was to subdivide Section 4 and establish temporary cutting lines in accordance with my contract. Basis of bearing is solar observation. All traverses were closed (approx. error closures 1/5000). Traverses were run with 1 min. theodolite; distances measured by a combination of steel tape & EDM. Section subdivision procedures were per BLM 1973 Manual. Assisting field crew was Tom Hoshall, Greg Stone, Lynn Miller, Kim Daniels & Bill Hales.

LEGEND

- Corners Found ●
- Temporary Corners Set ○
- Note: Bearing trees referencing temporary corners were not scribed. A 12" steel spike was driven in notched root collar. Also, trees were tagged
- Lines marked on the ground with metal boundary signs; red flagging & referenced with tags at stump level on trees. — + + + + —
- Ridge Line >>>
- Creek draws ————
- Cat Road ————
- EXISTING IMPROVED ROADS ————



CERTIFICATION

I hereby certify that I have completed this survey of Section 4, T. 30 S., R. 9 W., W.M., Douglas County, Oregon in accordance with our contract No. YA-553-CTO-93 dated 5-22-80 and in accordance with the 1973 BLM Manual.

Ronald E. Stuntzner
RONALD E. STUNTZNER
OREGON PLS 1342

Date: 8-8-80
Scale: 1" = 10 chains