

SURVEY IN LOTS 8 & 9, PLAT E, UMPQUA PARK FRUITLANDS  
 NE 1/4 Section 23, Twp. 27 S., Rng. 6 W., W. M.  
 Surveyed for Tommy Kimbrell by Landline Development Co.  
 May, 1980 Scale 1" = 50'

**COUNTY SURVEYORS FILE DATA**  
**DO NOT REMOVE FROM OFFICE**

FILED *J*  
 RECEIVED *JR*

JUN 19 1980

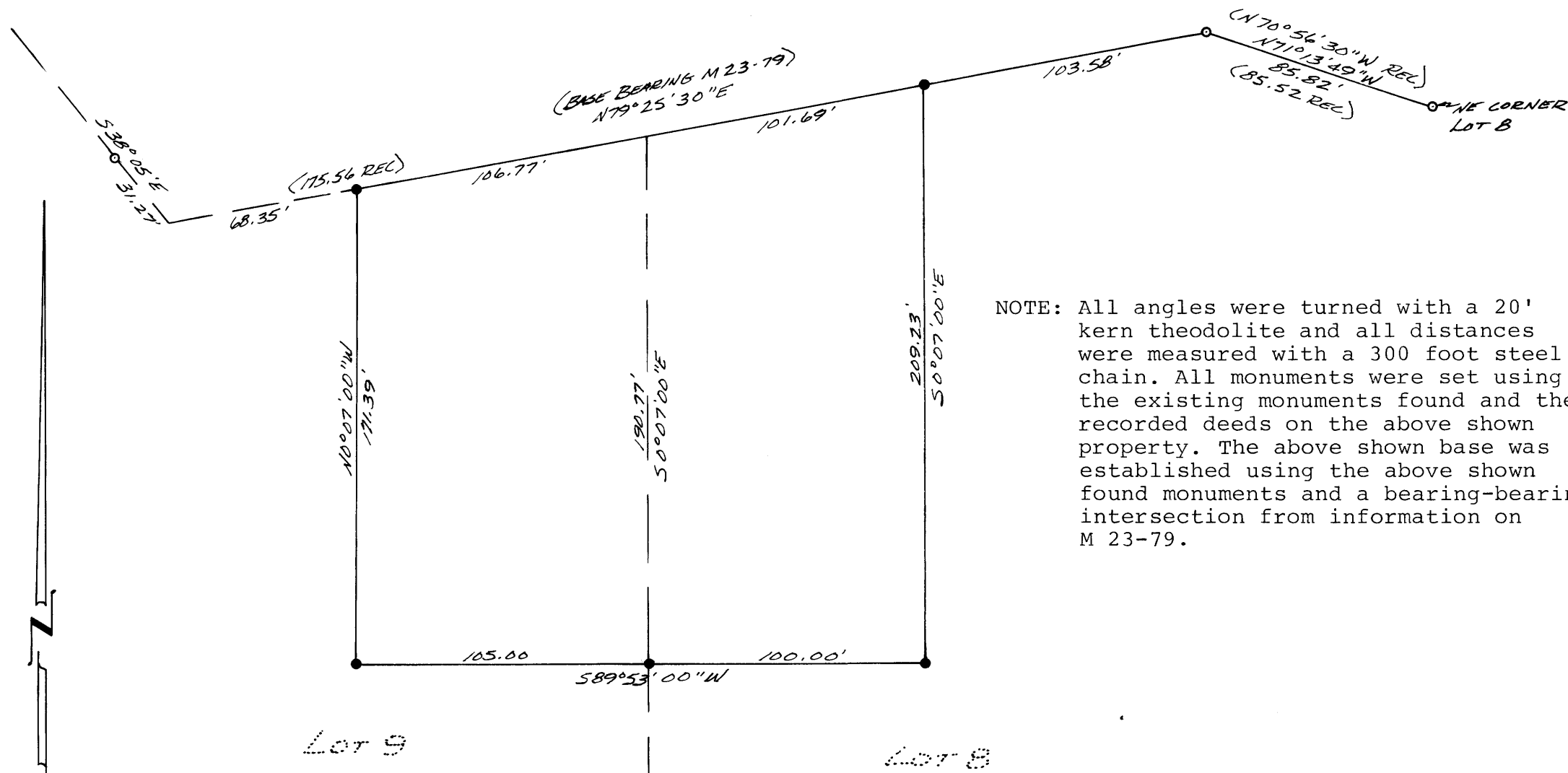
COUNTY SURVEYOR  
 DOUGLAS COUNTY, ORE

○ Found 5/8" Iron Rods

● Set 5/8" Iron Rods

Landline Development Co  
 PO Box 2191  
 Roseburg, Or.  
 672-5840

MAP FILE M84-9



NOTE: All angles were turned with a 20' kern theodolite and all distances were measured with a 300 foot steel chain. All monuments were set using the existing monuments found and the recorded deeds on the above shown property. The above shown base was established using the above shown found monuments and a bearing-bearing intersection from information on M 23-79.

REGISTERED  
 COUNTY SURVEYOR  
 DOUGLAS COUNTY, ORE

*Bruce R. Rogers*

JULY 10, 1984  
 BRUCE R. ROGERS  
 650

MAP FILE M84-9