

COUNTY SURVEYORS FILE DATA
DO NOT REMOVE FROM OFFICE

COUNTY SURVEYORS OFFICE
C.S. FILE NO. 377
FILING DATE 5-21-80

FILED 8A
RECEIVED 1/2

AUG 13 1980

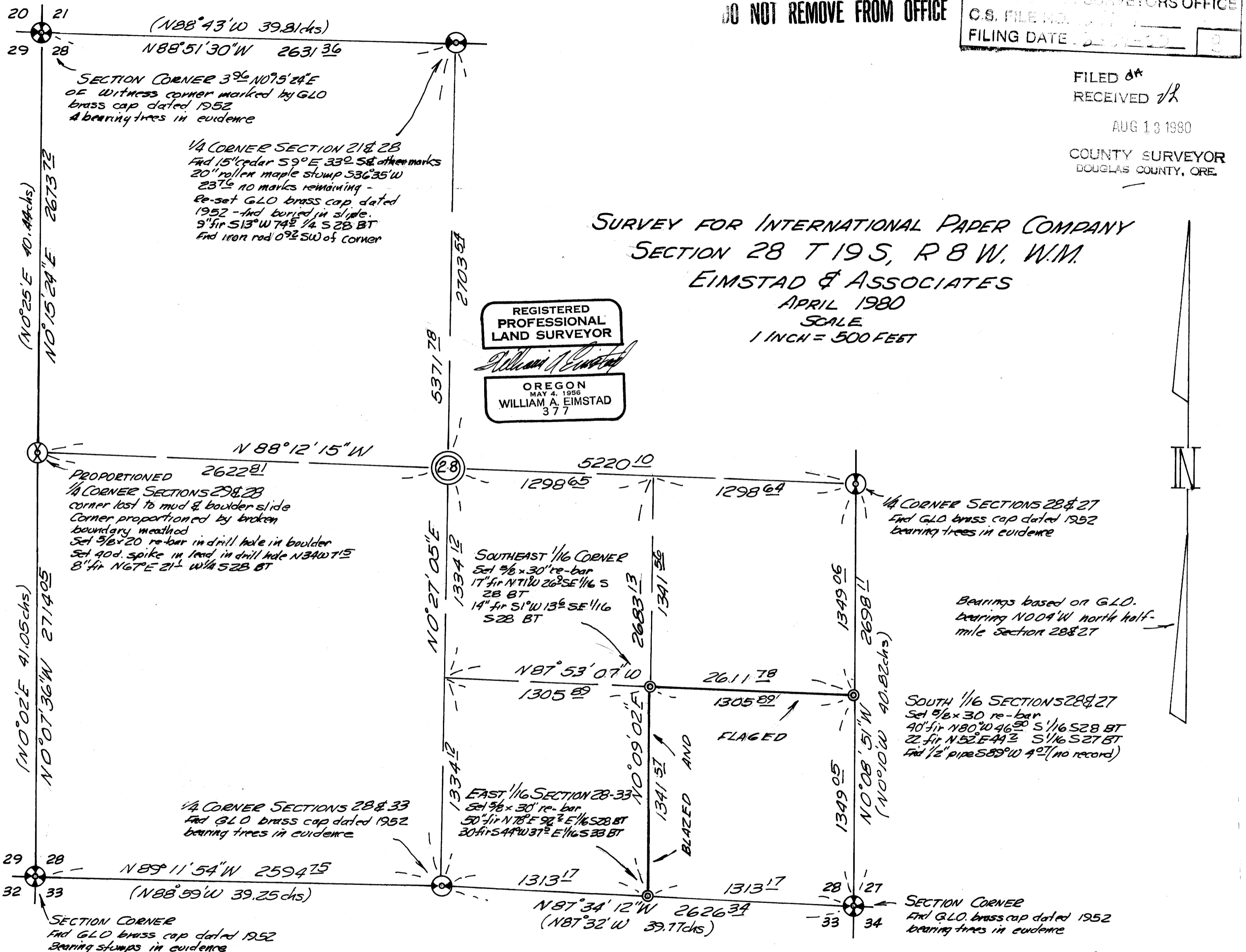
COUNTY SURVEYOR
DOUGLAS COUNTY, ORE.

SURVEY FOR INTERNATIONAL PAPER COMPANY
SECTION 28 T 19 S, R 8 W, W.M.
EIMSTAD & ASSOCIATES
APRIL 1980
SCALE
1 INCH = 500 FEET

REGISTERED
PROFESSIONAL
LAND SURVEYOR

William A. Eimstad

OREGON
MAY 4, 1956
WILLIAM A. EIMSTAD
377



Bearings based on G.L.O.
bearing N004°W north half-
mile Section 28&27

SOUTH 1/16 SECTION 28&27
Set 5/8 x 30 re-bar
40' fir N80°W 46' S 1/16 S 28 BT
22' fir N52°E 44' S 1/16 S 27 BT
Find 1/2" pipe S89°W 40' (no record)

SOUTHEAST 1/16 CORNER
Set 5/8 x 30' re-bar
17' fir N11°W 26' SE 1/16 S
28 BT
14' fir S1°W 13' SE 1/16
S 28 BT

EAST 1/16 SECTION 28-33
Set 5/8 x 30' re-bar
50' fir N78°E 92' E 1/16 S 28 BT
30' fir S44°W 37' E 1/16 S 33 BT

BLAZED AND
FLAGGED

EIMSTAD & ASSOCIATES
1717 WASHINGTON
EUGENE, OREGON

MAP FILE 1187-77

MAP FILE 1187-77