

COUNTY SURVEYORS FILE DATA
DO NOT REMOVE FROM OFFICE

FILED *DA*
RECEIVED *th*
AUG 12 1980
COUNTY SURVEYOR
DOUGLAS COUNTY, ORE.
BS

PROPERTY SURVEY
for
KNOWLTONS, INC.

Located in the Northeast 1/4 of the Southeast 1/4 of Section 4, Township 22 South, Range 12 West of the Willamette Meridian in the city of Reedsport, Douglas County, Oregon.

Date: July, 1980

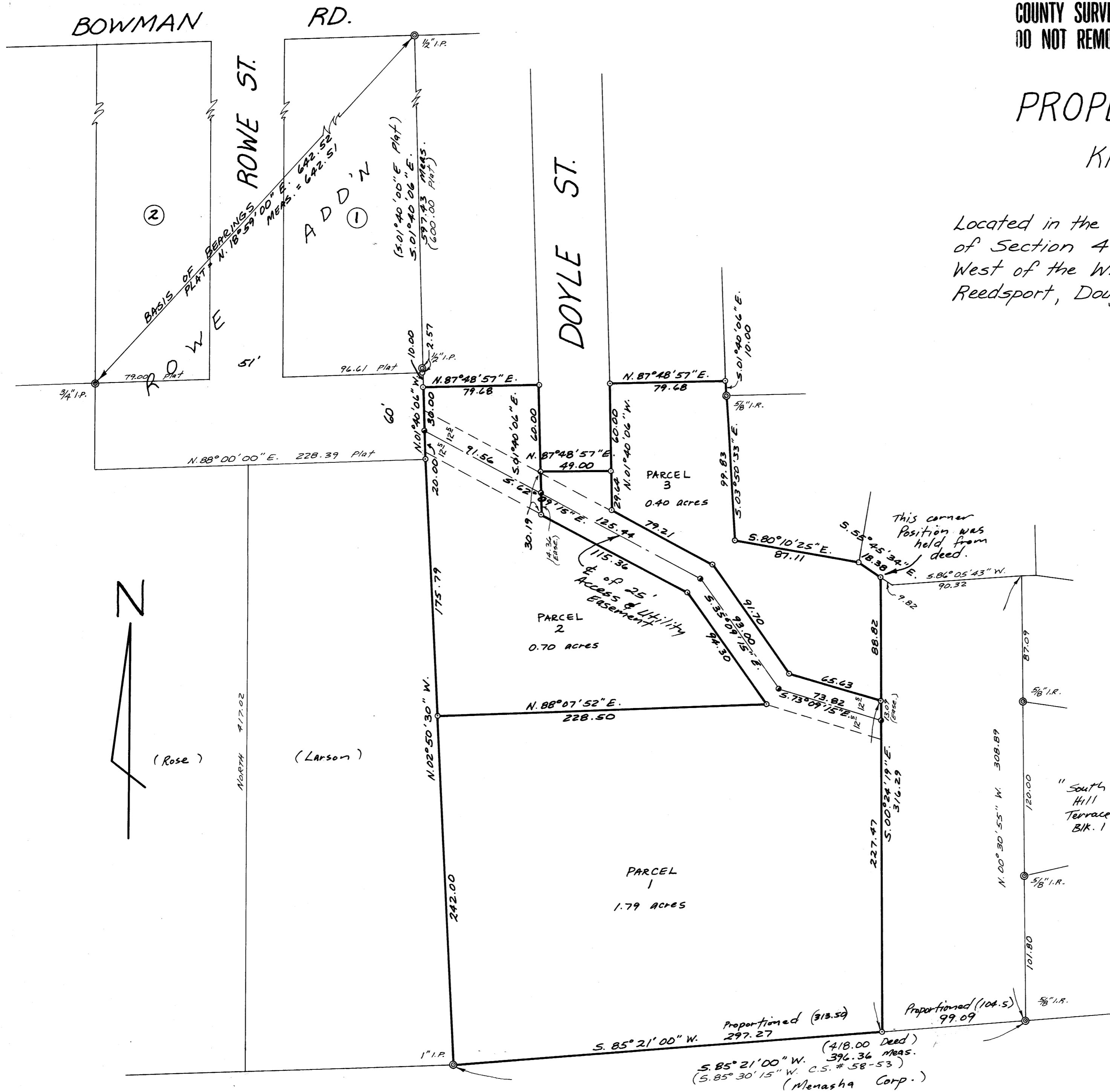
Scale: 1" = 50'

LEGEND

- ⊙ = Monument Found.
- = Set 5/8" I.R. 30" Long.
- = Calculated but not set.

Equipment used: 20 second theodolite and a Mac 14 EDM.

REGISTERED PROFESSIONAL LAND SURVEYOR
Mel Avery
OREGON
SEPT. 30 1977
MEL AVERY
1415



MAP FILE M84-77

No.	Revisions	Date	By	Checked

Designed _____
Drawn _____
Scale _____ Date _____
Checked _____
Parametrix, Inc.

REGISTERED PROFESSIONAL ENGINEERS AND ENVIRONMENTAL SCIENTISTS
Seattle Vancouver
Spokane Portland Eugene
Tacoma

PARAMETRIX, INC.
2785 FRONTAGE ROAD
REDSPORT, OREGON 97461
Job No. 14-112-R1

Sheet _____