

COUNTY SURVEYORS FILE DATA
DO NOT REMOVE FROM OFFICE

FILED
RECEIVED *HR*

JUL 31 1980

PROPERTY SURVEY
for
FRANK ROSE

COUNTY SURVEYOR
DOUGLAS COUNTY, ORE.

Located in the Southeast 1/4 of
Section 4, Township 22 South,
Range 12 West, W.M. in the City
of Reedsport, Douglas County, Oregon.

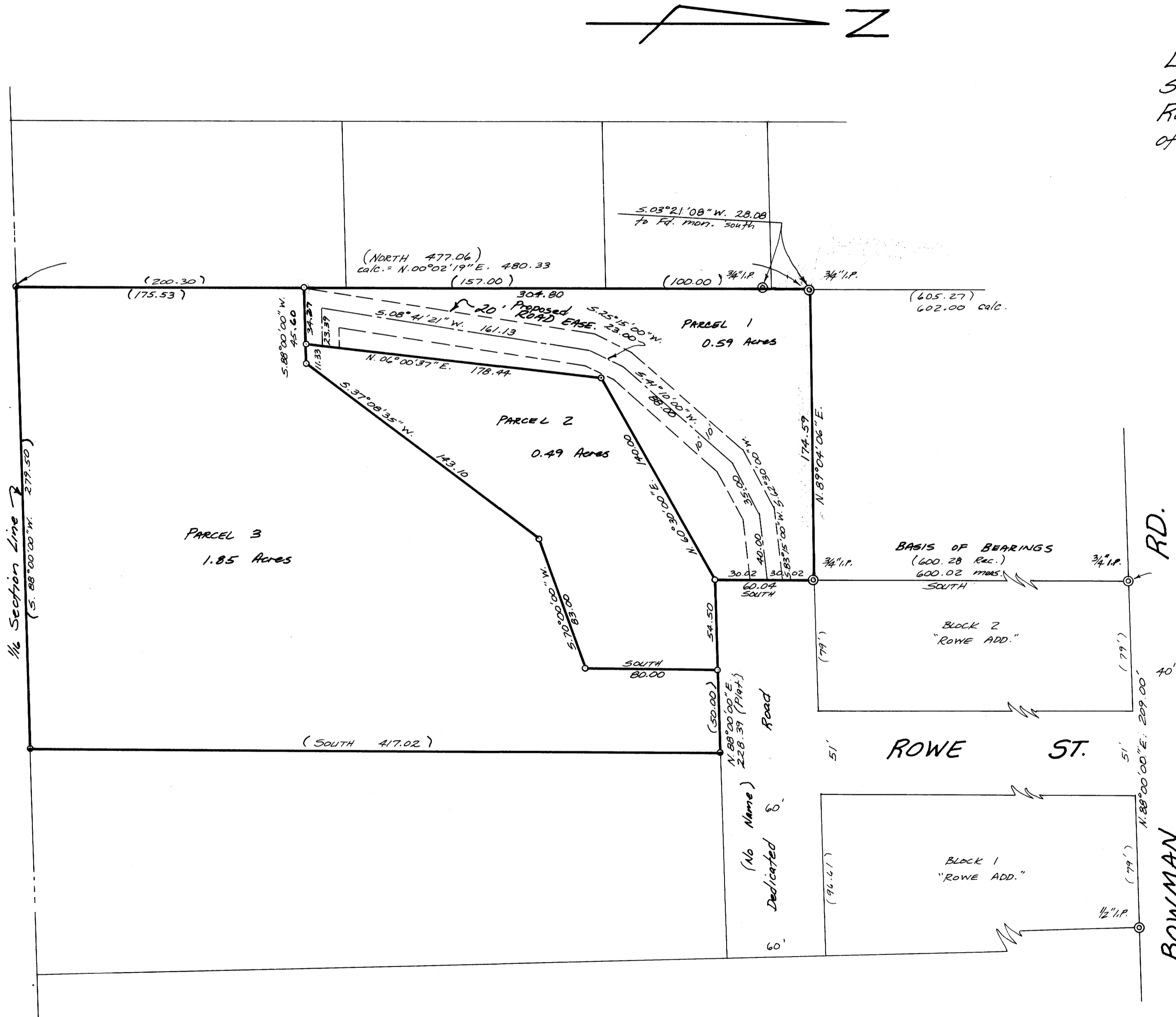
Date: July 9, 1980

Scale: 1" = 50'

"LEGEND"

- ⊙ = Monument Found
- = Set 5/8" I.R. x 30" long.
- = Calculated, but not set.

Occupancy = none



238.7 (Deed, Vol. 325, Pg. 390)
1/4 Corner (NW cor. of the NE 1/4 of the SE 1/4 of Sec. 4 22/12 South)

"Narrative"
Ran closed traverse through all found monuments and established my basis of bearings using "Plat of Rowe Addition" along with deeds to Mr. Rose's property.
Equipment used: 20 second theodolite and a Mac 14 EDM.

REGISTERED PROFESSIONAL LAND SURVEYOR
Mel Avery
OREGON
SEPT. 30, 1977
MEL AVERY
1415

Mel Avery
2785 Frontage Road, Reedsport, Ore. 271-4844

MAP FILE M.84-66

MAP FILE M.84-66

No.	Revisions	Date	By	Checked

Designed
Drawn
Checked
Approved
Scale
Date
Parametrix, Inc.

CONSULTANTS IN ENGINEERING AND ENVIRONMENTAL SCIENCES
Seattle
Spokane
Portland
Vancouver
Eugene
Tacoma

Job No. 14-119-RO

Sheet
1 of 1