

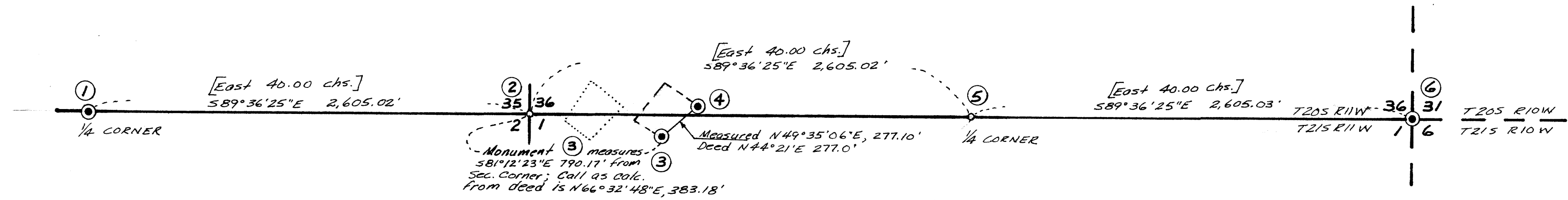
**RESURVEY TOWNSHIP BOUNDARY
ALONG PORTIONS OF
SECTIONS 1&2 T21S R11W WM
SECTIONS 35&36 T20S R11W WM
DOUGLAS COUNTY OREGON**

COUNTY SURVEYORS FILE DATA
DO NOT REMOVE FROM OFFICE

FILED
RECEIVED
JUL 29 1980
COUNTY SURVEYOR
DOUGLAS COUNTY, ORE.
p-1

SURVEY BY
STUNTZNER ENGINEERING & FORESTRY
P.O. BOX 118 ... 375 PARK ... COOS BAY ORE.
PH 503 267 2872 97420

SURVEY FOR
COOS HEAD TBR CO.
P.O. BOX 750
COOS BAY ORE. 97420



NARRATIVE

The purpose of this survey was to re-establish the 1/4 corner between Sec. 31 and the corner to sections 1, 2, 35 & 36. These are lost corners, as searches for the original Gov. corners were made by the County Surveyor, my field crew, and others. The corners were re-established in their single proportionate positions. The survey was done by open-ended traverse, using a 1 minute theodolite and EDM, with some minor measuring by steel tape. Basis of bearing is from solar observation. The secondary purpose of this survey was to tie existing monuments on the East boundary of a small parcel "excepted" from the deed dated Sept. 23, 1965 from William & Mable Rose to Coos Head Timber Co. It was found that this parcel is actually located approximately 400 feet easterly of the position called for by said deed. Field crew: Jerry Ice, party chief; Kim Daniels, chainman.

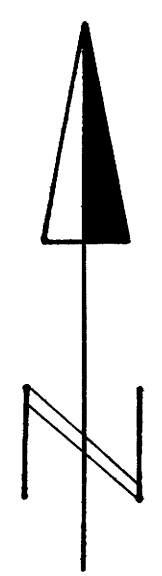
LEGEND

- Corners Found ●
- Corners Set ○
- Original G.L.O. Record [East 40.00 chs.]
- Location of parcel exception to Coos Head Tbr. Co. deed per deed description.
- Location of parcel exception to Coos Head Tbr. Co. deed as found monumented on the ground.

CORNER NOTES

- ① Found 3/4" iron pipe at 1/4 corner to Sec. 35 & 2. This corner has been perpetuated in its original position by Eppstein in 1929 and Godfrey in 1964. Found following BTs: orig. 52" Red Cedar S10°W 12.0'; 22" Red Cedar N58°E 34.5' (Godfrey BT)
- * ② Scribed "X" on rock 4" underground for corner to Sec. 1 & 2, T21S, R11W and Sec. 35 & 36, T20S, R11W. Unable to set B.C.I.P. which I deposit along side corner; built sandstone mound on top of corner stone. I scribe the following BTs: 12" D.F. N44°W 12.9' "535BT"; 10" D.F. S24°W 3.4' "52BT"; 14" D.F. S49°E 7.5' "51BT"; 10" D.F. N89°E 12.9' "536BT"; chopped "X" on 10" D.F., West 12.2'.
- ③ Found 3/4" iron pipe on West side Co. Road.
- ④ Found 1/2" iron pipe on West side Co. Road.
- ⑤ Set 2" B.C.I.P. at proportionate distance for 1/4 corner to Sec. 36 & 1 marked I scribe the following BTs: 22" D.F. S52°E 18.3' "41BT"; 40" Maple N65°W 14.7' "44BT"
- ⑥ Found B.C.I.P. at corner to Township 20 & 21 South, Range 11 West and Township 20 & 21 South, Range 10 West, point also being common to sections 36, 31, 6 & 1. This corner has been perpetuated in its original position by Eppstein in 1929 and County Surveyor's office in 1968. I found following BTs: 40" D.F. S77°15'E 42.9' (1929 BT); 28" Maple N14°W 15.2' (1929 BT); Tagged 16" Maple (No record) S27°W 11.2'.
- * ⑦ On July 29, 198 the corner to 1, 2, 35 and 36 was revisited. A stardrill was driven into the bedrock at the corner point on left extending 8" above the surfaced. A 2"x12" B.C.I.P. filled with concrete was placed over the stardrill and stamped:

T20S R11W
35 36
2 1
1980
PLS 1342
T21S R11W



Scale 1" = 500'
Date: 7-24-80

REGISTERED
PROFESSIONAL
LAND SURVEYOR
Ronald E. Stuntzner
OREGON
REGISTERED 21 477
RONALD E. STUNTZNER
1342

MAP FILE M84-62

MAP FILE M84-62