

SURVEY OF SEC. 16, T24S, RIW, W.M.

SURVEYED FOR: CHAMPION INTERNATIONAL CORP.

SURVEYED BY: THOMAS E. SHRUM JR.

FILED *BS*
RECEIVED *BS*

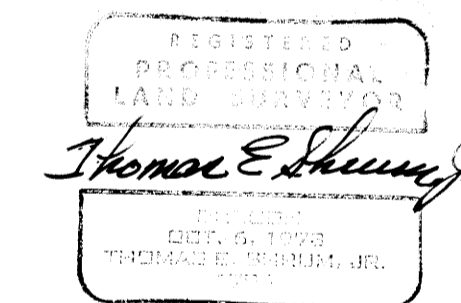
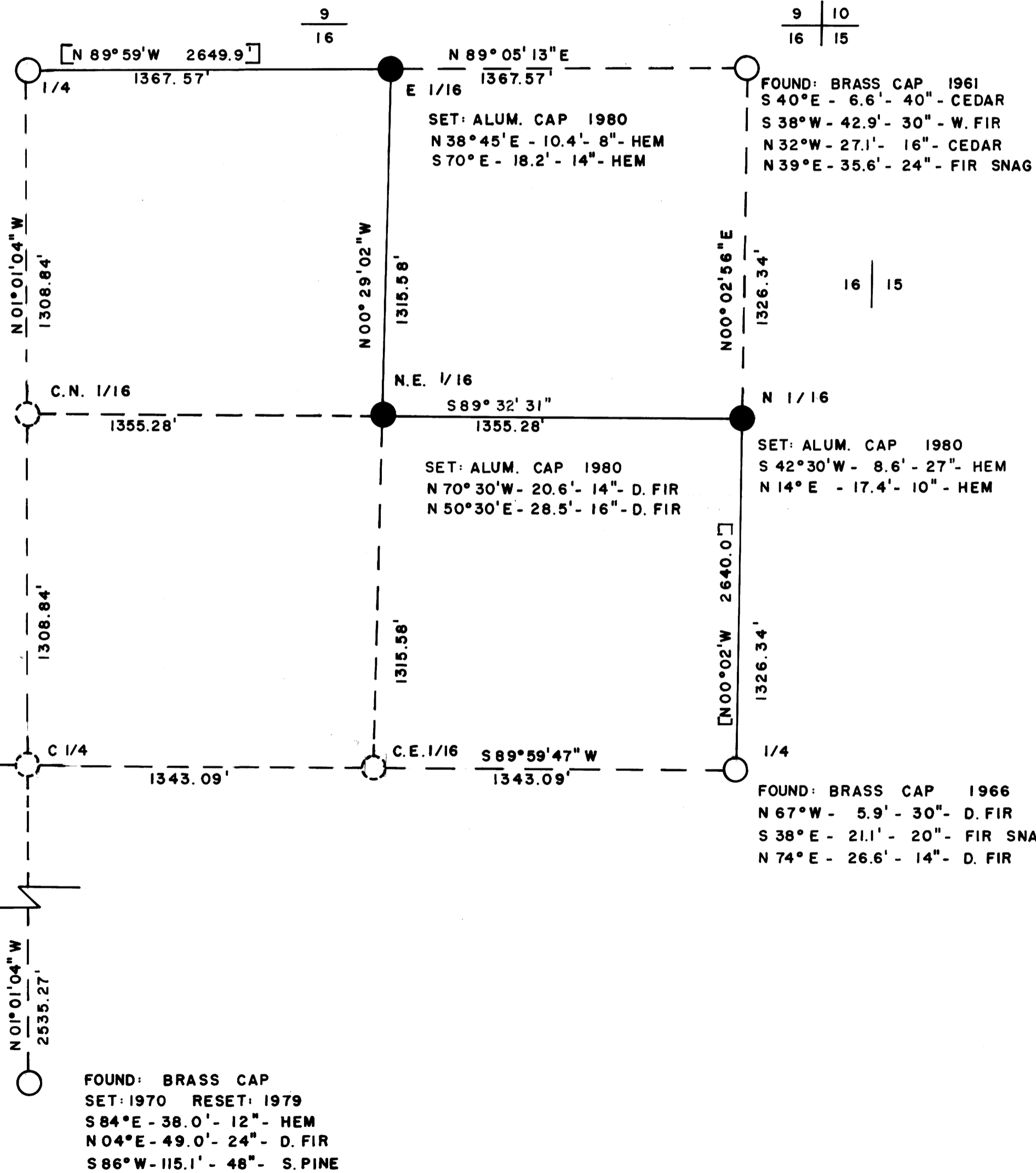
NOV 21 1980

COUNTY SURVEYOR
DOUGLAS COUNTY, ORE.
BS

THIS SURVEY WAS MADE BY THOMAS E. SHRUM JR. OF CHAMPION INTERNATIONAL CORP. TO ESTABLISH CHAMPION'S PROPERTY LINES IN THE NE 1/4 OF SECTION 16, T24S, RIW, W.M., DOUGLAS COUNTY, OREGON. THE SURVEY WAS DURING THE MONTHS OF OCT. AND NOV. 1980. CLOSED TRANSIT TRAVERS, WITH A MINIMUM ERROR OF 1/5000', WERE RUN FOR CONTROL. OFFSETS TO TRUE LINE WERE CALCULATED AND OFFSET IN THE FIELD TO THE TRUE PROPERTY LINE. THE PROPERTY LINE WAS MARKED WITH TREE BLAZES AND BLUE RIBBON. SOLAR OBSERVATION WAS MADE TO DETERMINE BEARINGS.



SET: ALUM. CAP 1979
FOUND: B.T. - ORIGINAL
S79°W - 16.5' - 16" - D. FIR
N37°E - 9.2' - 6" - FIR SNAG



17 | 16

S. 1/4

16
21

MAP FILE M 84-55

MAP FILE M 84-55