

SUBDIVISION SECTION 23 TOWNSHIP 21 SOUTH RANGE 11 WEST WILLAMETTE MERIDIAN DOUGLAS COUNTY OREGON

FILED &
RECEIVED *JS*

JUL 22 1980

COUNTY SURVEYOR
DOUGLAS COUNTY, ORE.

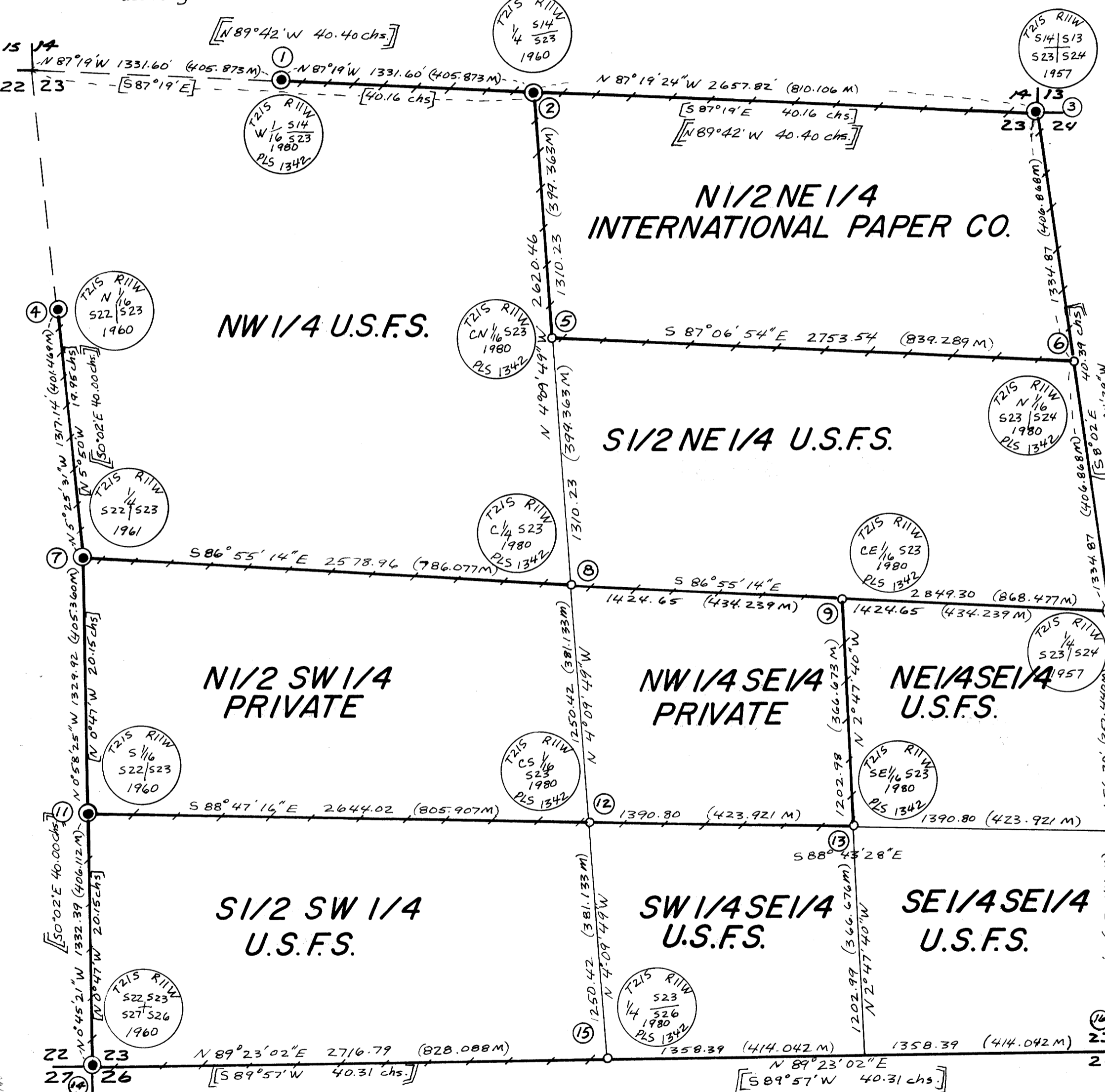
MAP FILE N84-51

NARRATIVE

This survey was performed for International Paper Company and the U.S.F.S. in order to establish the true lines of their respective ownership within Section 23, T21S, R11W, W.M. Douglas County Oregon as shown herewith. The employees that aided in the performance of this survey are: Greg Stone, Tom Hoshall, Frank McNew and various chainmen. The equipment used is: 20 second theodolite, 300 foot engineers chain and Mac 1 E.D.M. Having verified the location of the control corners on the outer boundary as shown herewith I commenced at the S.W. corner of said Sec. 23 and completed a closed loop random control traverse around the South 1/2 of said Sec. 23. From this control traverse and additional closed loop random traverses I tied to the various corners required in order to properly subdivide the section. With additional closing traverses I established true line as shown and set corners as required by my contract and in accordance with the 1973 BLM manual. In this survey it was determined that the location of various corners as shown on survey map by W. Haines, PLS 239 dated 8-19-74 are not positioned correctly, our survey data and the 1973 manual. These found interior corners were not used as control in this survey according to

CORNER NOTES:

- NOTE: CORNER MONUMENTS SET IN THIS SURVEY WERE 2 1/2" X 3/4" ALUMINUM CAPPED ALUMINUM PIPE (ACAP), EXCEPT AS NOTED. ACAP'S MARKED AND BT'S SCRIBED AS PER 1973 B.L.M. MANUAL OF SURVEYING INSTRUCTION AND ACCEPTED SURVEYING PRACTICES.**
- FOUND 5/8" IR. AT WEST 1/4 CORNER FROM WHICH: 16" RALDER BRS. N58W, 15 1/2 FT.; 28" RALDER BRS. SSE, 41 1/2 FT.; AS PER MY 1979 SURVEY, REMOVED 5/8" IR. AND SET ACAP MONUMENT.
 - FOUND 1960 2 1/2" B.C.I.P. (B.L.M.) AT 1/4 CORNER, SET IN ROCK LEDGE FROM WHICH: 20" D.FIR STUMP, NOW BROKEN AND SPLIT WITH SCRIBES VISIBLE BRS. S73 1/2 E 21 1/2 K.; 16" CEDAR N44 1/2 W 12 Ks.
 - FOUND 1957 2 1/2" B.C.I.P. (B.L.M.) AT SECTION CORNER FROM WHICH: 14" MAPLE BRS. S40E 27 1/2 FT.; 24" D.FIR BRS. N74W 66 1/2 FT.; 50" D.FIR SNAG BRS. S58W 31 1/2 FT.; 50" D.FIR, DEAD AND DOWN BRS. N42E 30 1/2 FT.
 - FOUND 1960 2 1/2" B.C.I.P. (B.L.M.) AT N 1/4 CORNER, FROM WHICH: 18" D.FIR BRS. N45E 35 1/2 FT.; 18" MAPLE BRS. S63W 8 1/2 FT.
 - SET A.C.A.P. MONUMENT AT CN 1/4 CORNER, FROM WHICH I SCRIBED: 13" D.FIR BRS. N79E 16 1/2 FT.; 8" D.FIR BRS. N84W 11 1/2 FT.
 - SET A.C.A.P. MONUMENT AT N 1/4 CORNER FROM WHICH I SCRIBED: 20" D.FIR BRS. S80E 8 1/2 FT.; 10" D.FIR S80W 21 1/2 FT.
 - FOUND 1961 2 1/2" B.C.I.P. (B.L.M.) AT WEST 1/4 CORNER, FROM WHICH: 50" D.FIR BRS. N77E 7 1/2 FT. (OTHER RECORDED BT'S NOT VERIFIED)
 - SET A.C.A.P. MONUMENT AT CENTER 1/4 CORNER, FROM WHICH I SCRIBED: 14" D.FIR BRS. N43W 59 1/2 FT.; 11" MAPLE BRS. S70E 29 1/2 FT.
 - SET A.C.A.P. MONUMENT AT CE 1/4 CORNER FROM WHICH I SCRIBED: 25" D.FIR BRS. S62E 39 1/2 FT.; 18" MAPLE BRS. S41W 49 1/2 FT. (FD 5/8" IR. BRS. S76W 37 1/2 FT. - SET BY W.N. HAINES #239 IN SURVEY FOR CONE LUMBER CO. DATED AUGUST 19, 1974)
 - FOUND 1957 2 1/2" B.C.I.P. (B.L.M.) AT EAST 1/4 CORNER, FROM WHICH: 30" D.FIR BRS. N27E 26 1/2 FT. (OTHER RECORDED BT'S NOT VERIFIED) I SCRIBED NEW BT 28" D.FIR BRS. N14W 31 1/2 FT.
 - FOUND 1960 2 1/2" B.C.I.P. (B.L.M.) AT SOUTH 1/4, FROM WHICH: 38" D.FIR BRS. N87E 39 1/2 FT.; 38" D.FIR BRS. N14W 49 1/2 FT.
 - SET A.C.A.P. MONUMENT AT CS 1/4 CORNER, FROM WHICH I SCRIBED: 24" RALDER BRS. S66E 9 1/2 FT.; 20" RALDER BRS. S44W 31 1/2 FT.
 - SET 2 1/2" BRASS DISC IN ROCK FACE AT SE 1/4 CORNER, FROM WHICH I SCRIBED: 20" D.FIR BRS. N8E 20 1/2 FT.; 16" D.FIR BRS. S44W 32 1/2 FT.
 - FOUND 1960 2 1/2" B.C.I.P. (B.L.M.) AT SW SECTION CORNER FROM WHICH: 10" D.FIR BRS. N13W 17 1/2 FT.; FD. BLDWN DOWN D.FIR BT'S IN NW, SW, AND SE QUADRANTS; I SCRIBED 10" D.FIR BRS. N22E 21 1/2 FT.; 24" MAPLE (BARK SCRIBED) BRS. S48E 110 1/2 FT. NO ACCEPTABLE WITNESS MONUMENTS IN SW QUADRANT.
 - SET A.C.A.P. AT SOUTH 1/4 CORNER FROM WHICH I SCRIBED: 20" D.FIR BRS. N45W 18 1/2 FT.; 24" D.FIR BRS. S12E 73 1/2 FT. (FD 5/8" IR. BRS. S42W 215 1/2 FT., SET IN SURVEY FOR CONE LUMBER CO. DATED AUGUST 19, 1974) THOROUGHLY SEARCHED FOR ORIGINAL CORNER STONE AND WAS NOT FOUND, THEREFORE SET THIS CORNER AT PROPORTIONAL DISTANCE.
 - FOUND ORIGINAL SANDSTONE CORNER MONUMENT, ONE SCRIBE GROOVE MARK VISIBLE. FOUND 1968 20" D.FIR STUMP WITH ALUMINUM POSTER NAILS AS PER U.S.F.S. CORNER PERPETUATION NOTES, SCRIBES NOW BURNED WITH CHOP MARKS VISIBLE. SET A.C.A.P. MONUMENT FROM WHICH I SCRIBED 24" D.FIR STUMP BRS. N62E 25 1/2 FT. (S24 BT); 30" D.FIR STUMP BRS. S44E 12 1/2 FT. (S26 BT); MARKED "X" IN ROCK FACE BRS. N22W 36 1/2 FT.; MARKED "X" IN ROCK BLUFF BRS. S6W 14 1/2 FT.



Basis Of Bearing:
Solar Observation

REGISTERED PROFESSIONAL LAND SURVEYOR
Ronald E. Stuntzner
OREGON SEPTEMBER 23, 1977
RONALD E. STUNTZNER
1942

CERTIFICATION

I Ronald E. Stuntzner a registered land surveyor in the state of Oregon hereby certify that this plat and the notes hereon are a complete representation of a survey I performed in the winter and spring of 1980 for the U.S.F.S. and International Paper Company in accordance with the State of Oregon and the articles of my contract.

Ronald E. Stuntzner
Ronald E. Stuntzner PLS 1342

SURVEY FOR:
INTERNATIONAL PAPER CO.
P.O. BOX 43
GARDNER, OR. 97441

SIUSLAW NATIONAL FOREST
P.O. BOX 1148
CORVALLIS, OR. 97330

SURVEY BY:
STUNTZNER ENGINEERING & FORESTRY
P.O. BOX 118 COOS BAY, OR. 97420

MAP FILE N84-51