

MAJOR LAND PARTITION

IN THE NW 1/4 SECTION 21, T.26S. R.6W. W.M.

JUNE 1980 — SCALE: 1"=100'

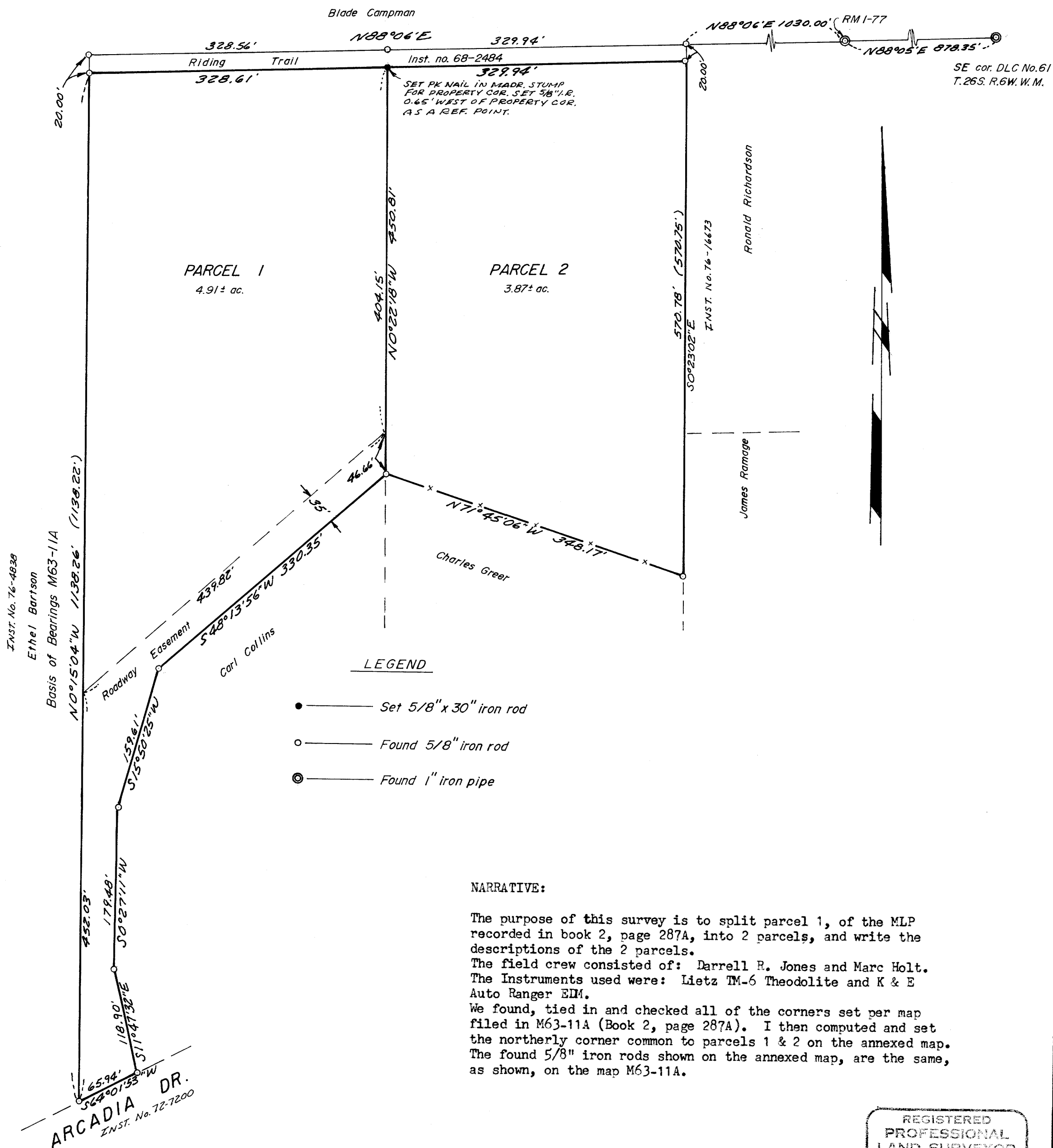
COUNTY SURVEYORS FILE DATA
DO NOT REMOVE FROM OFFICE

FILED
RECEIVED

JUN 18 1980

COUNTY SURVEYOR
DOUGLAS COUNTY, ORE.

35



REGISTERED
PROFESSIONAL
LAND SURVEYOR
Eugene A. Bloom
OREGON
MAY 19, 1960
EUGENE A. BLOOM
492

SHEET 2 OF 2

MAP FILE M64-3B 162-80FB52

DB 6-19-1980