

FILED
RECEIVED
JUL 11 1980
COUNTY SURVEYOR
DOUGLAS COUNTY, OREGON

CORNERS USED FOR CONTROL

- ① CORNER TO SECTIONS 7, 18, 13, AND 12
FOUND A 2 1/2" IRON PIPE WITH BRASS CAP
20" WHITE OAK, S 65 W, 203.9' CSBT
26" WHITE OAK, S 78 W, 176.1' CSBT
18" WHITE OAK, N 70 W, 189.9' CSBT
15" WHITE FIR, N 59 W, 205.5' CSBT
- ② NORTHEAST CORNER DLC # 38
FOUND DOWNED 30" OAK, N 12 W, 70.0', FACE VISIBLE
FOUND DOWNED 24" OAK, N 4 E, 153.1', BADLY BURNED
SET 1/2" IRON PIPE WITH I.P. CO. BRASS CAP
18" FIR, N 73 E, 16.6'
16" FIR, N 56 W, 10.9'
- ③ NORTHWEST CORNER DLC # 39
FOUND N-3-E FENCE
FOUND 38" OAK, S 25 E, 99.0', FACE VISIBLE, HOLLOW TREE
FOUND 26" DOWNED OAK, S 65 E, 133.3', FACE VISIBLE
SET 1/2" IRON PIPE WITH I.P. CO. BRASS CAP
12" FIR, N 79 E, 82.4'
- ④ CORNER TO SECTIONS 18, 19, 24, AND 13
FOUND A 2 1/2" IRON PIPE WITH BLM BRASS CAP 1977
6" FIR, N 64 1/2 E, 54.5' NEW BT
6" FIR, S 21 3/4 E, 29.7' NEW BT
15" FIR, N 12 1/2 W, 51.1' NEW BT
- ⑤ SOUTHWEST CORNER DLC # 43
FOUND A 2 1/2" IRON PIPE WITH BLM BRASS CAP 1968
28" FIR, S 17 E, 27.8' NEW BT
16" FIR, N 34 E, 38.6' NEW BT
- ⑥ NORTHEAST CORNER DLC # 41
FOUND A 2 1/2" IRON PIPE WITH BLM BRASS CAP 1977
9" FIR, S 38 E, 4.3' NEW BT
14" FIR, S 36 W, 29.9' NEW BT
- ⑦ SOUTHEAST CORNER DLC # 43
FOUND A 2 1/2" IRON PIPE WITH BLM BRASS CAP 1968
40" SAWED FIR, STUMP, N 10 E, 38.3' ORIGINAL BT
40" SAWED FIR, STUMP, N 80 W, 34.3' ORIGINAL BT
12" FIR, S 79 E, 18.4' CSBT
12" FIR, S 3 W, 21.4' CSBT
- ⑧ 1/4 CORNER TO SECTIONS 17 AND 18
FOUND A 2 1/2" IRON PIPE WITH BLM BRASS CAP 1977
14" FIR, S 88 3/4 E, 48.2' NEW BT
9" FIR, N 71 3/4 W, 51.1' NEW BT
20" SAWED FIR, STUMP, S 33 E, 10.4' CSBT
- ⑨ INTERIOR CORNER ON EAST BOUNDARY DLC 43
FOUND A 2 1/2" IRON PIPE WITH BLM BRASS CAP 1968
18" FIR, N 29 E, 356.4' NEW BT
25" FIR, S 19 1/2 W, 293.7' NEW BT
20" WHITE OAK, N 4 E, 600.6' ORIGINAL BT

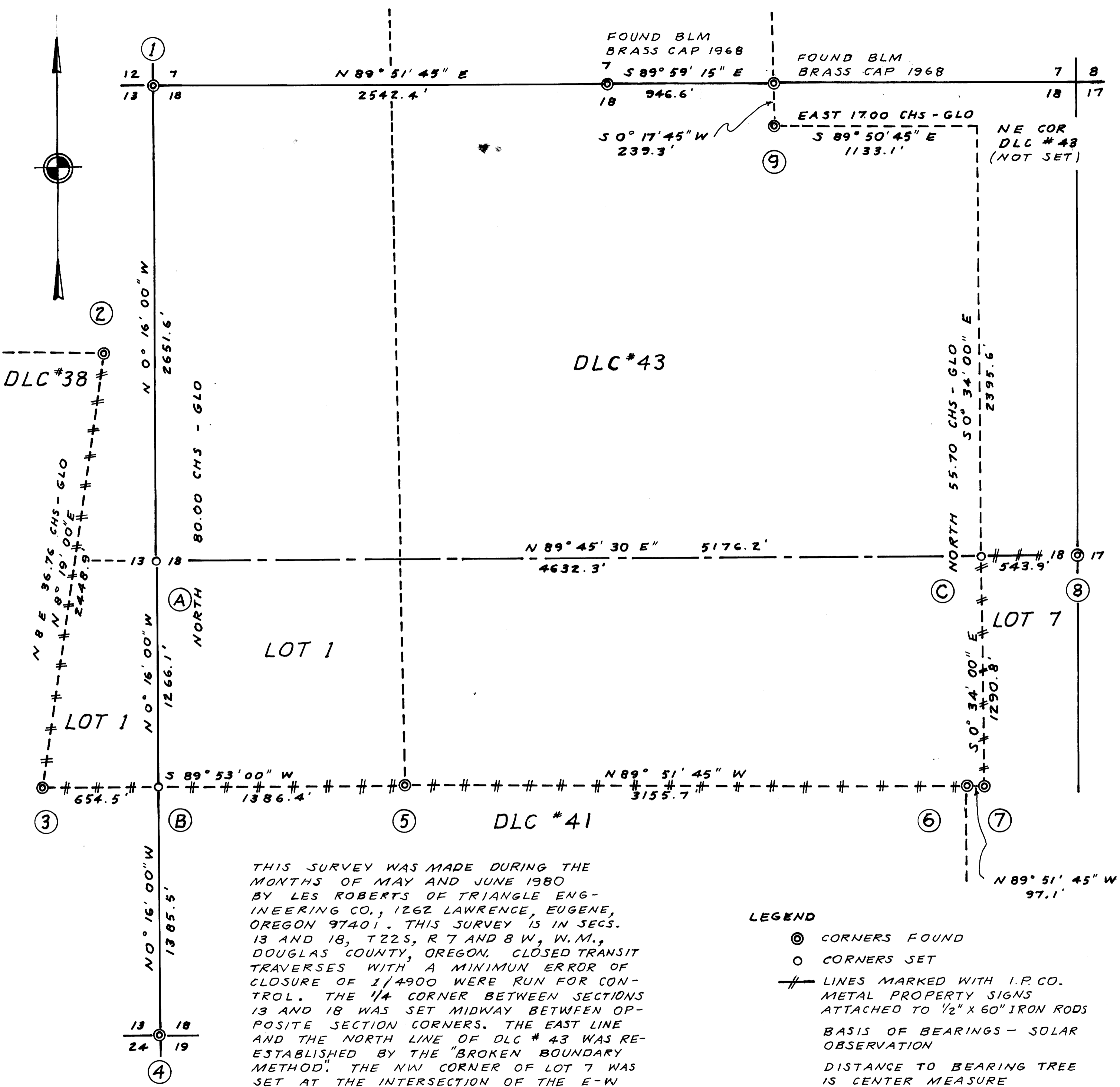
CORNERS SET THIS SURVEY

- (A) 1/4 CORNER BTWN SECS 13 AND 18
SET 1/2" IRON PIPE WITH I.P. CO. BRASS CAP
13" FIR, N 8 E, 8.4'
7" FIR, N 88 W, 16.2'
- (B) SW COR LOT 1 SEC 18 & SE COR LOT 1 SEC 13
SET 1/2" IRON PIPE WITH BRASS CAP
12" ALDER, N 25 E, 29.2'
17" ALDER, N 60 W, 16.0'
- (C) NW CORNER LOT 7 SECTION 18
SET 1/2" IRON PIPE WITH I.P. CO. BRASS CAP
22" FIR, N 1 E, 19.1'
10" WHITE FIR, N 78 E, 21.4'

SURVEY IN
SECS. 13 & 18, T 22 S, R 7 & 8 W, W.M.
DOUGLAS COUNTY, OREGON

FOR
INTERNATIONAL PAPER COMPANY
BY
TRIANGLE ENGINEERING CO.
SCALE: 1"=400' JUNE 1980

COUNTY SURVEYORS FILE DATA
DO NOT REMOVE FROM OFFICE



THIS SURVEY WAS MADE DURING THE MONTHS OF MAY AND JUNE 1980 BY LES ROBERTS OF TRIANGLE ENGINEERING CO., 1262 LAWRENCE, EUGENE, OREGON 97401. THIS SURVEY IS IN SECS. 13 AND 18, T 22 S, R 7 AND 8 W, W.M., DOUGLAS COUNTY, OREGON. CLOSED TRANSIT TRAVERSES WITH A MINIMUM ERROR OF CLOSURE OF 1/4900 WERE RUN FOR CONTROL. THE 1/4 CORNER BETWEEN SECTIONS 13 AND 18 WAS SET MIDWAY BETWEEN OPPOSITE SECTION CORNERS. THE EAST LINE AND THE NORTH LINE OF DLC # 43 WAS RE-ESTABLISHED BY THE "BROKEN BOUNDARY METHOD". THE NW CORNER OF LOT 7 WAS SET AT THE INTERSECTION OF THE E-W CENTER LINE WITH THE EAST LINE OF DLC # 43. THE SW CORNER OF LOT 1 WAS SET AT THE INTERSECTION OF THE WEST LINE OF SECTION 18 WITH THE NORTH LINE OF DLC # 41. OFFSETS TO THE TRUE LINE WERE COMPUTED FROM THE MEANDER TRAVERSES. TRUE LINE IS MARKED BY I.P. CO. PROPERTY SIGNS ATTACHED TO 1/2" x 60" IRON RODS SPACED NOT OVER 300' APART.

LEGEND

- ⊙ CORNERS FOUND
- CORNERS SET
- #— LINES MARKED WITH I.P. CO. METAL PROPERTY SIGNS ATTACHED TO 1/2" x 60" IRON RODS
- BASIS OF BEARINGS - SOLAR OBSERVATION
- DISTANCE TO BEARING TREE IS CENTER MEASURE
- ALL BEARING TREES SET ON THIS SURVEY ARE SCRIBED

REGISTERED PROFESSIONAL LAND SURVEYOR
Les Roberts
L.D. ROBERTS
1939

MAP FILE M84-39