

COUNTY SURVEYORS FILE DATA
DO NOT REMOVE FROM OFFICE

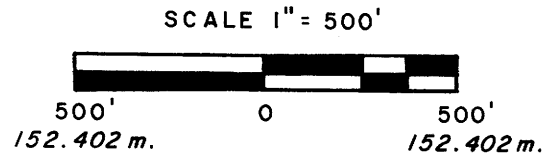
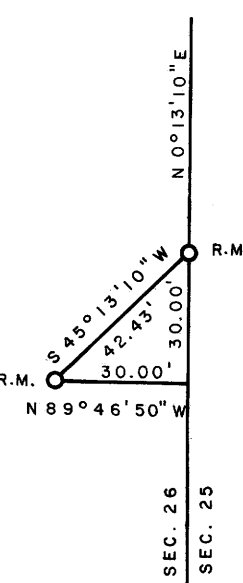
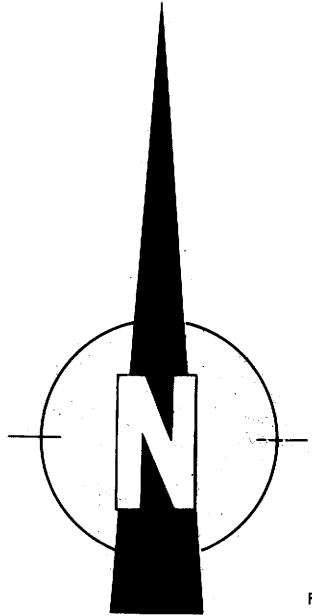
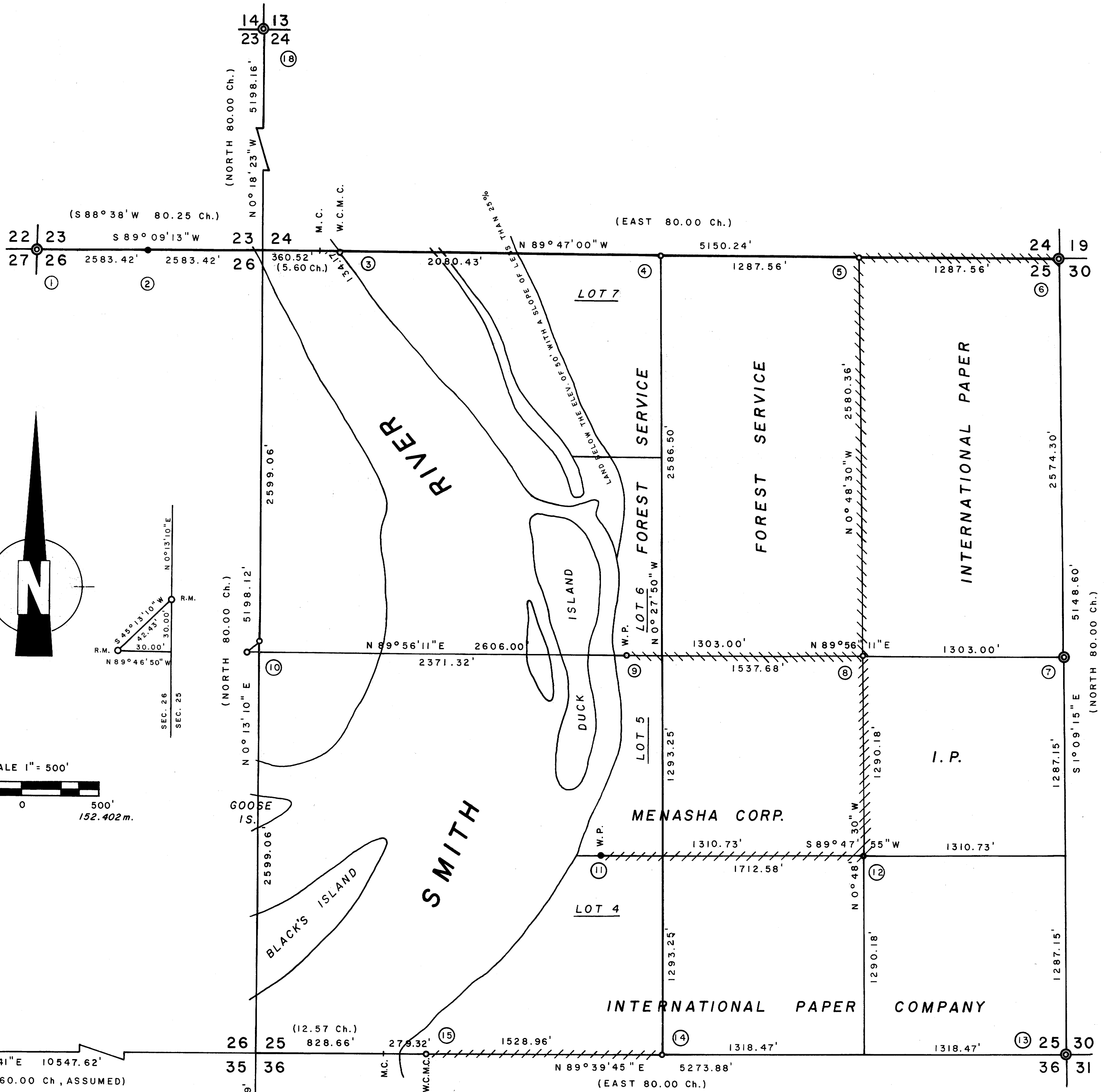
FILED
RECEIVED

NOV 14 1980

COUNTY SURVEYOR
DOUGLAS COUNTY, ORE.

COOPERATIVE SURVEY FOR INTERNATIONAL PAPER CO. MENASHA CORPORATION U.S. FOREST SERVICE

SECTION 25, T21S, R12W
SCALE 1" = 500' NOV. 1980



THERE ARE NO G.L.O. NOTES FOR THE EAST 1/2 OF THE SOUTH LINES OF SECTIONS 26 & 27.

REGISTERED PROFESSIONAL LAND SURVEYOR
Richard J. Hintz
OREGON
MAY 18, 1980
RICHARD J. HINTZ
497
RICHARD J. HINTZ
1890 N. 14th ST.
COOS BAY, OREGON

- LEGEND**
- CORNERS FOUND
 - SET 2" ALUMINUM PIPES W/STAMPED AL. CAPS
 - SET 1 1/4" I.P.'S W/STAMPED BRASS CAPS
 - PROPERTY LINES ESTABLISHED, 1/2" I.R.'S WITH ATTACHED ALUMINUM SIGNS
 - PROPERTY LINES ESTABLISHED, U.S.F.S. FIBERGLASS POSTS
 - (FROM ORIGINAL G.L.O. NOTES)

- NOTES**
1. BASIS FOR BEARING, TRUE FROM SOLAR OBSERVATION AND MAP M 79-30.
 2. THIS SURVEY WAS MADE IN ACCORDANCE WITH THE B.L.M. MANUAL OF SURVEY INSTRUCTIONS.
 3. REFER TO ACCOMPANYING SHEET FOR CORNER ACCESSORIES
 4. MEAN MAGNETIC DECLINATION 18° 45'
 5. EQUIPMENT USED, KERN KI-SE THEODOLITE/DM 500
 6. THE ORIGINAL SURVEY WAS MADE BY HARVEY GORDON, DEPUTY SURVEYOR, UNDER CONTRACTS 68 & 69, DATED FEB. 2, 1857. THE DOUGLAS COUNTY SURVEYORS OFFICE RENEWED THE SE CORNER OF SECTION 25 IN 1971, AND I RESTABLISHED THE NE SECTION COR. AND EAST 1/4 CORNER OF SECTION 25 IN 1976.