

COUNTY SURVEYORS FILE DATA
DO NOT REMOVE FROM OFFICE

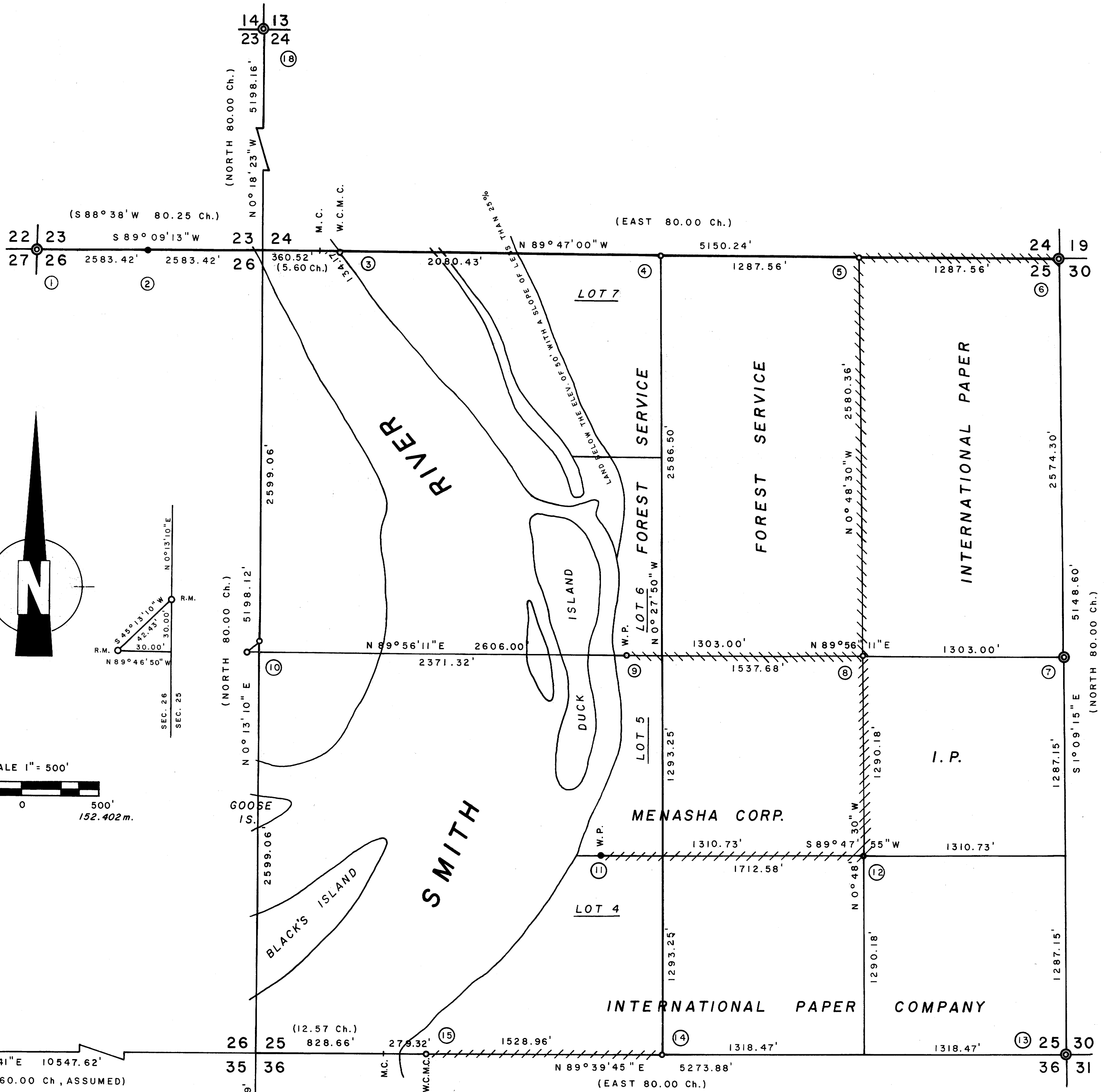
FILED
RECEIVED

NOV 14 1980

COUNTY SURVEYOR
DOUGLAS COUNTY, ORE.

COOPERATIVE SURVEY FOR INTERNATIONAL PAPER CO. MENASHA CORPORATION U.S. FOREST SERVICE

SECTION 25, T21S, R12W
SCALE 1" = 500' NOV. 1980



REGISTERED
PROFESSIONAL
LAND SURVEYOR

Richard J. Hintz

OREGON
MAY 18, 1980
RICHARD J. HINTZ
497

RICHARD J. HINTZ
1890 N. 14th ST.
COOS BAY, OREGON

- LEGEND**
- CORNERS FOUND
 - SET 2" ALUMINUM PIPES W/STAMPED AL. CAPS
 - SET 1 1/4" I.P.'S W/STAMPED BRASS CAPS
 - PROPERTY LINES ESTABLISHED, 1/2" I.R.'S WITH ATTACHED ALUMINUM SIGNS
 - PROPERTY LINES ESTABLISHED, U.S.F.S. FIBERGLASS POSTS
 - (FROM ORIGINAL G.L.O. NOTES)

- NOTES**
1. BASIS FOR BEARING, TRUE FROM SOLAR OBSERVATION AND MAP M 79-30.
 2. THIS SURVEY WAS MADE IN ACCORDANCE WITH THE B.L.M. MANUAL OF SURVEY INSTRUCTIONS.
 3. REFER TO ACCOMPANYING SHEET FOR CORNER ACCESSORIES
 4. MEAN MAGNETIC DECLINATION 18°45'
 5. EQUIPMENT USED, KERN KI-SE THEODOLITE/DM 500
 6. THE ORIGINAL SURVEY WAS MADE BY HARVEY GORDON, DEPUTY SURVEYOR, UNDER CONTRACTS 68 & 69, DATED FEB. 2, 1857. THE DOUGLAS COUNTY SURVEYORS OFFICE RENEWED THE SE CORNER OF SECTION 25 IN 1971, AND I REESTABLISHED THE NE SECTION COR. AND EAST 1/4 CORNER OF SECTION 25 IN 1976.

NOV 14 1980

COUNTY SURVEYOR
DOUGLAS COUNTY, OREGON

1. $\frac{22}{27} | \frac{23}{26}$ Found 1 1/4" IP with stamped brass pipe cap from which an 18" Spruce (rotten stump) brs. S 32° W, 37.6 ft.; Renewal #1

New bearing trees:

- 52" Spruce brs. N 50° 30' E, 72.7 ft., scribed
- 42" Spruce brs. S 57° 15' E, 33.8 ft., scribed
- 16" Alder brs. S 40° 00' W, 59.8 ft., scribed
- 10" Hemlock brs. N 10° 00' W, 12.3 ft., scribed

2. $\frac{23}{26}$ Corner Set 1 1/4" IP with stamped brass cap from which: 12" Alder brs. N 7° 00' W, 7.9 ft., scribed 12" Fir brs. S 34° 00' W, 5.9 ft., scribed

Note: I made a thorough search for the iron pipe and brass cap as shown being found in CS 51/333 and CS 54/30, but its position was in the head of a draw which has now slid away to bed rock.

3. Witness Cor. to M.C. $\frac{24}{25}$ Set 2" aluminum pipe with stamped aluminum cap on top of dike, left bank of Smith River from which: 60" Spruce brs. N 78° 30' E, 284.4 ft. to 50d nail in the face, scribed 48" double Spruce brs. S 36° 00' E, 197.9 ft. to 50d nail in the face, scribed. BT is on top of river dike.

4. $\frac{24}{25}$ Corner Set 2" aluminum pipe with stamped aluminum cap from which: 18" Spruce brs. N 46° 00' W, 4.4 ft., scribed 28" Maple brs. S 39° 15' E, 15.5 ft., scribed

5. E 1/16 $\frac{24}{25}$ Set 2" aluminum pipe with stamped aluminum cap from which: 80" Spruce brs. N 15° 00' E, 56.7 ft. to a 50d nail in the face, scribed 20" Spruce brs. S 64° 00' W, 130.0 ft. to a 50d nail in the root collar, scribed Corner falls on the East side of a creek bottom.

6. $\frac{24}{25} | \frac{19}{30}$ Found 5/8" I.R. Renewal #56, M62-1

7. $\frac{25}{30}$ Corner Found 5/8" I.R. Renewal #57, M62-1

8. CE 1/16 Sec. 25 Set 2" aluminum pipe with stamped aluminum cap from which: 62" Fir brs. S 49° 00' E, 22.4 ft., scribed 24" Fir brs. N 12° 00' W, 18.4 ft., scribed

9. Witness Pt. C—C Sec. 25 Set 2" aluminum pipe with stamped aluminum cap from which: 16" Maple brs. N 16° 00' E, 31.2 ft., scribed 42" Spruce brs. S 36° 30' W, 6.1 ft., scribed

10. $\frac{26}{25}$ Corner Corner falls on West shoulder of Smith River County Road #48 (not Set) 2" aluminum pipe with stamped aluminum cap brs. N 0° 13' 10" E, 30.00 ft. (reference monument) 2" aluminum pipe with stamped aluminum cap brs. N 89° 46' 50" W, 30.00 ft. (reference monument)

11. Witness Pt. S—S Sec. 25 Set 1 1/4" IP with stamped brass cap from which: 12" Fir brs. N 70° 00' E, 14.3 ft., scribed 16" Fir brs. S 16° 00' E, 4.3 ft., scribed

12. SE 1/16 Sec. 25 Set 1 1/4" IP with stamped brass cap from which: 24" Fir brs. S 55° 00' E, 11.2 ft., scribed 50" Fir brs. S 19° 00' W, 13.0 ft., scribed

13. $\frac{25}{36} | \frac{30}{31}$ Found IP with brass cap, Douglas County Surveyor, 1971, Renewal #26, M42-27

14. $\frac{25}{36}$ Corner Set 2" aluminum pipe with stamped aluminum cap from which: 10" Fir brs. N 10° 30' E, 5.8 ft., scribed 6" Fir brs. S 43° 45' E, 5.7 ft., scribed

15. Witness Cor. to M.C. $\frac{25}{36}$ Set 2" aluminum pipe with stamped aluminum cap from which: 16" Fir brs. N 87° 30' E, 31.3 ft., scribed 16" White Fir brs. N 14° 00' W, 18.2 ft., scribed

16. $\frac{28}{33} | \frac{27}{34}$ Found 1" I.R. 3" below ground, Renewal #35, from which: SE corner of brick chimney brs. N 40° 45' W, 178.7 ft. Formerly given as N 41° W, 162.3 ft. 50d nail on West side of pole AE 3 1/4 D brs. S 36° 15' W, 75.9 ft., formerly given as S 36° 30' W, 76.6 ft. Set steel fence post 1 ft. North of corner.

17. $\frac{35}{21} | \frac{36}{11}$ Found IP with brass cap, Douglas County Surveyor, Renewal #29, M42-27

18. $\frac{14}{23} | \frac{13}{24}$ Renewal #77, M79-30, Found 2" IP with brass cap

NOTE: All distances are taken to a 50d nail driven in the side of each BT at its approximate center, unless noted. An International Paper Company or Forest Service aluminum bearing tree sign is attached to each BT with a 6" band painted around the tree above the BT sign, and the blazes are also painted. A guard post or posts was set 3 to 5 feet away from the monuments on each line between national forest and private ownership with attached appropriate signs.

Richard J. Hintz, PLS #497
November 3, 1980



CORNER ACCESSORIES
FOR
COOPERATIVE SURVEY
SECTION 25, T21S, R12W
DOUGLAS COUNTY, OREGON
COUNTY SURVEYORS FILE DATA
DO NOT REMOVE FROM OFFICE