

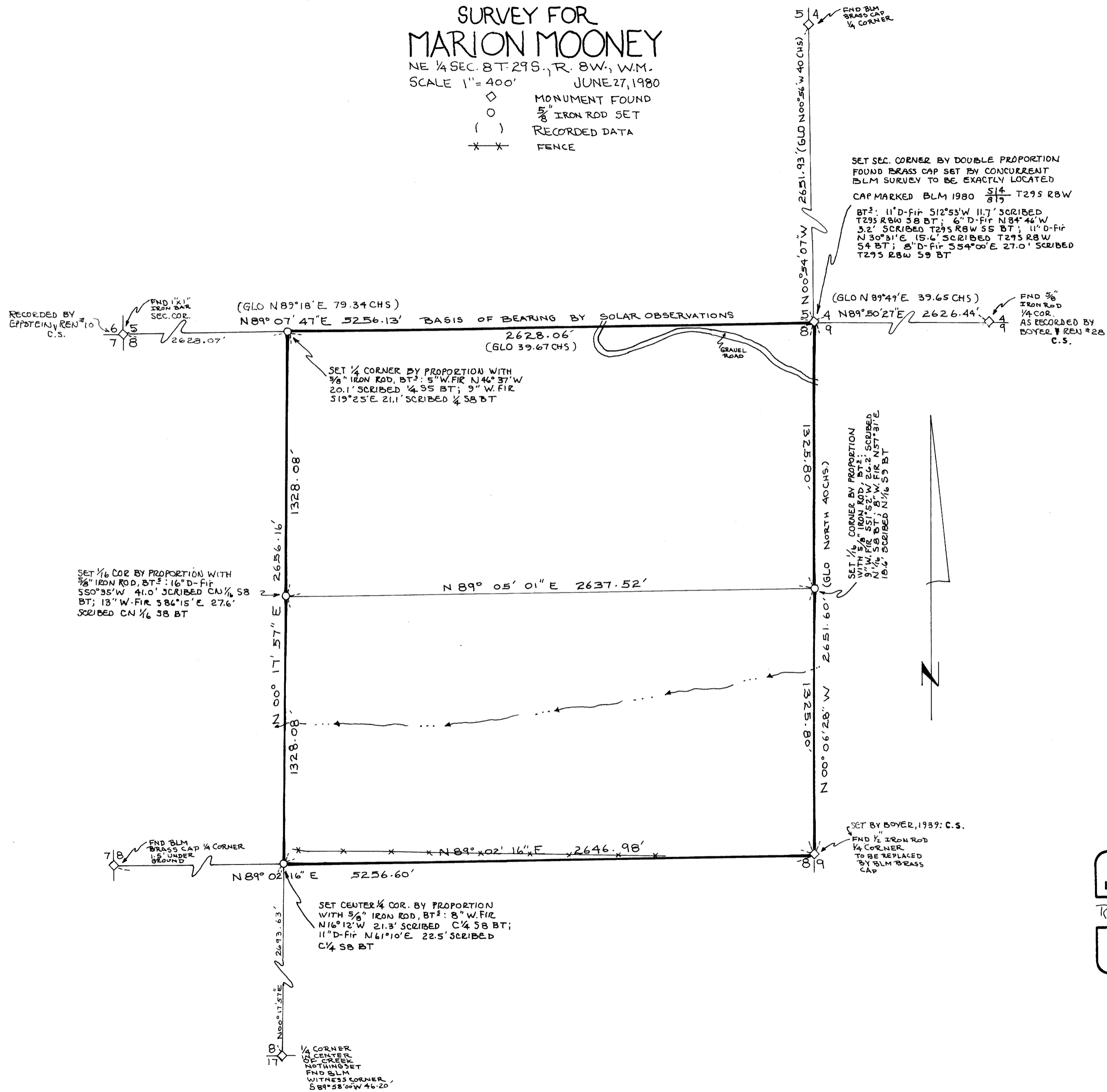
COUNTY SURVEYORS FILE DATA
DO NOT REMOVE FROM OFFICE

FILED
RECEIVED
JUL 1 1980
COUNTY SURVEYOR
DOUGLAS COUNTY, ORE.

SURVEY FOR
MARION MOONEY

NE 1/4 SEC. 8 T. 29 S., R. 8 W., W.M.
SCALE 1" = 400' JUNE 27, 1980

- ◇ MONUMENT FOUND
- 5/8" IRON ROD SET
- () RECORDED DATA
- X- FENCE



SET SEC. CORNER BY DOUBLE PROPORTION
FOUND BRASS CAP SET BY CONCURRENT
BLM SURVEY TO BE EXACTLY LOCATED
CAP MARKED BLM 1980 $\frac{514}{815}$ T295 RBW
BT³: 11" D-FIR S12°53'W 11.7' SCRIBED
T295 RBW 38 BT; 6" D-FIR N84°46'W
3.2' SCRIBED T295 RBW 55 BT; 11" D-FIR
N30°31'E 15.6' SCRIBED T295 RBW
54 BT; 8" D-FIR S54°00'E 27.0' SCRIBED
T295 RBW 59 BT

RECORDED BY
EPPSTEIN, REN #10
C.S.

FND 5/8"
IRON ROD
1/4 COR.
AS RECORDED BY
BOYER, REN #28
C.S.

SET 1/16 COR BY PROPORTION WITH
3/8" IRON ROD, BT²: 16" D-FIR
S50°35'W 41.0' SCRIBED CN 1/16 S8
BT; 13" W-FIR S86°15'E 27.6'
SCRIBED CN 1/16 S8 BT

SET 1/4 CORNER BY PROPORTION WITH
3/8" IRON ROD, BT²: 5" W-FIR N46°37'W
20.1' SCRIBED 1/4 S5 BT; 9" W-FIR
S19°25'E 21.1' SCRIBED 1/4 S8 BT

SET 1/16 CORNER BY PROPORTION
WITH 3/8" IRON ROD, BT²:
9" W-FIR S51°52'W 26.2' SCRIBED
N 1/16 S8 BT; 8" W-FIR N57°31'E
18.6' SCRIBED N 1/16 S9 BT

SET BY BOYER, 1939: C.S.
FND 1/2" IRON ROD
1/4 CORNER
TO BE REPLACED
BY BLM BRASS
CAP

SET CENTER 1/4 COR. BY PROPORTION
WITH 5/8" IRON ROD, BT²: 8" W-FIR
N16°12'W 21.3' SCRIBED C 1/4 S8 BT;
11" D-FIR N61°10'E 22.5' SCRIBED
C 1/4 S8 BT

1/4 CORNER
OF CENTER
OF CREEK
NOTHING SET
FND BLM
WITNESS CORNER
S89°58'00"W 46.20'

REGISTERED
PROFESSIONAL
LAND SURVEYOR

Russell D Hendricks

OREGON
July 9, 1965
RUSSELL D. HENDRICKS
688

RUSSELL D. HENDRICKS
38894 PENGRA ROAD
FALL CREEK, OR 97428

MAP FILE M 84 - 19

MAP FILE M 84 - 19