

SW 1/4 S.26, SE 1/4 S.27, T.21S, R.5W. W.M.

Survey for change in Road Easement

June 20, 1980

Scale: 1" = 100'

For Quentin R. Rychar

Dakin, Oreg.

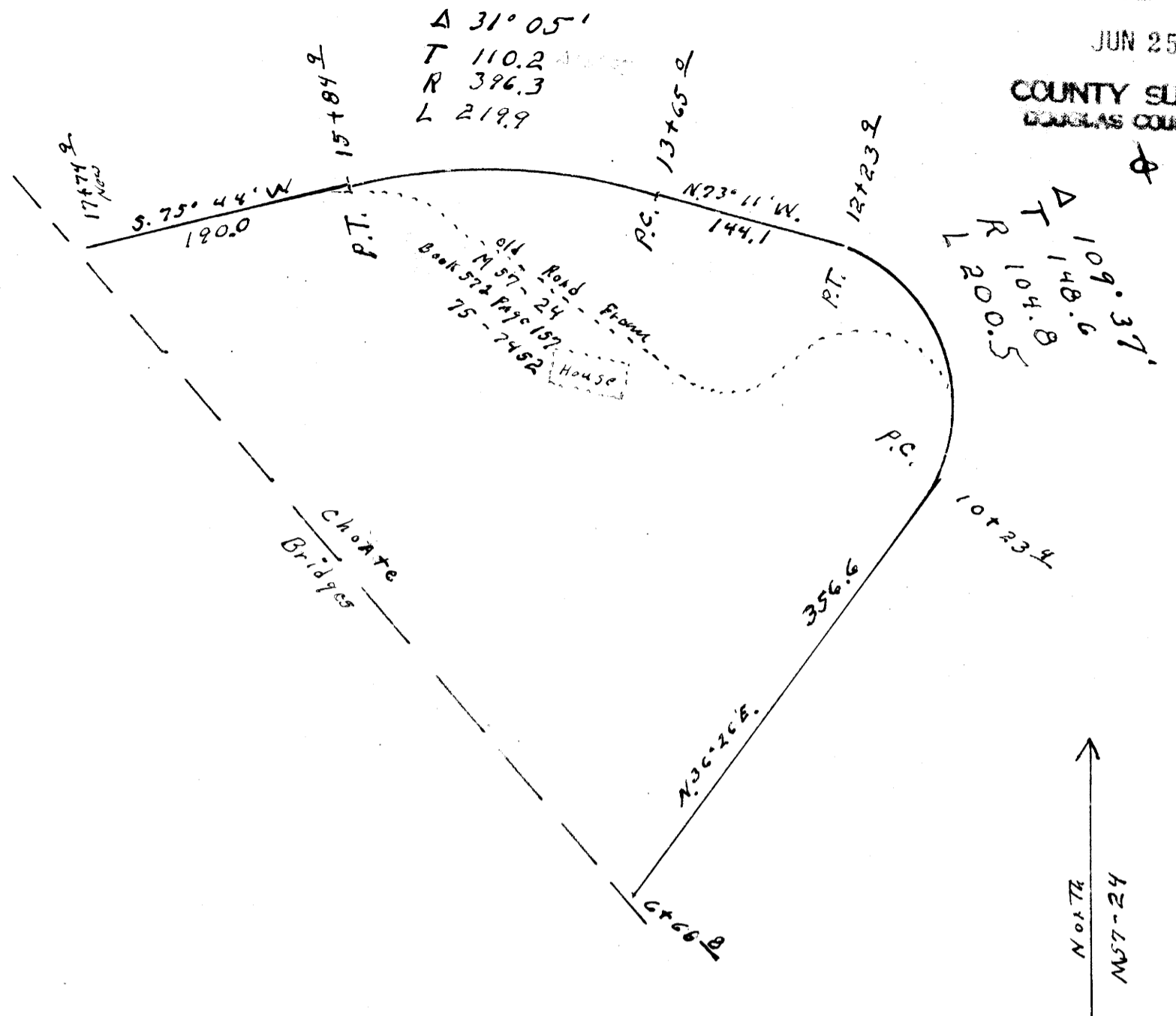
by Wilford N. Haines

RT.38 Box 2

Dakin, Oreg. 97435

COUNTY SURVEYORS FILE DATA
DO NOT REMOVE FROM OFFICE

This survey began at sta. 6+66.2 a point in a traveled road and on line between Bridges and Choate and from which point the section corner common to sections 26-27-34 and 35 T.21S, R.5W. bears S.39°59'E 18.4 and S.21°37'E. 131.65, thence N.36°26'E 356.6 ft. to sta. 10+23.4, thence on a curve to the left with a radius of 104.8 ft 200.5 ft. to sta. 12+23.2 thence N.73°11'W. 144.1 ft. to sta. 13+65.2, thence on a curve to the left with a radius 396.3 ft 219.9 ft. to station 15+84.2, thence S.75°44'W. 190.0 ft. to station 17+74.2 a point on line between Bridges + Choate this point is old sta 17+59.2 and from which point the above mentioned section corner bears S.39°59'E. 608.4 ft and S.21°37'E. 131.65 ft.



FILED &
RECEIVED &

JUN 25 1980

COUNTY SURVEYOR
DOUGLAS COUNTY, ORE

MAP FILE M84-15

27-26 T.21S, R.5W. W.M.
34-35

REGISTERED
OREGON
LAND SURVEYOR
Wilford N. Haines
MAY 7, 1946
WILFORD N. HAINES
239

MAP FILE M84-15