

COUNTY SURVEYORS FILE DATA
DO NOT REMOVE FROM OFFICE

Subdivision of NW 1/4 Section 22, T29S, R6W, W.M., Oregon

Roseburg Lumber Company

June 2, 1980

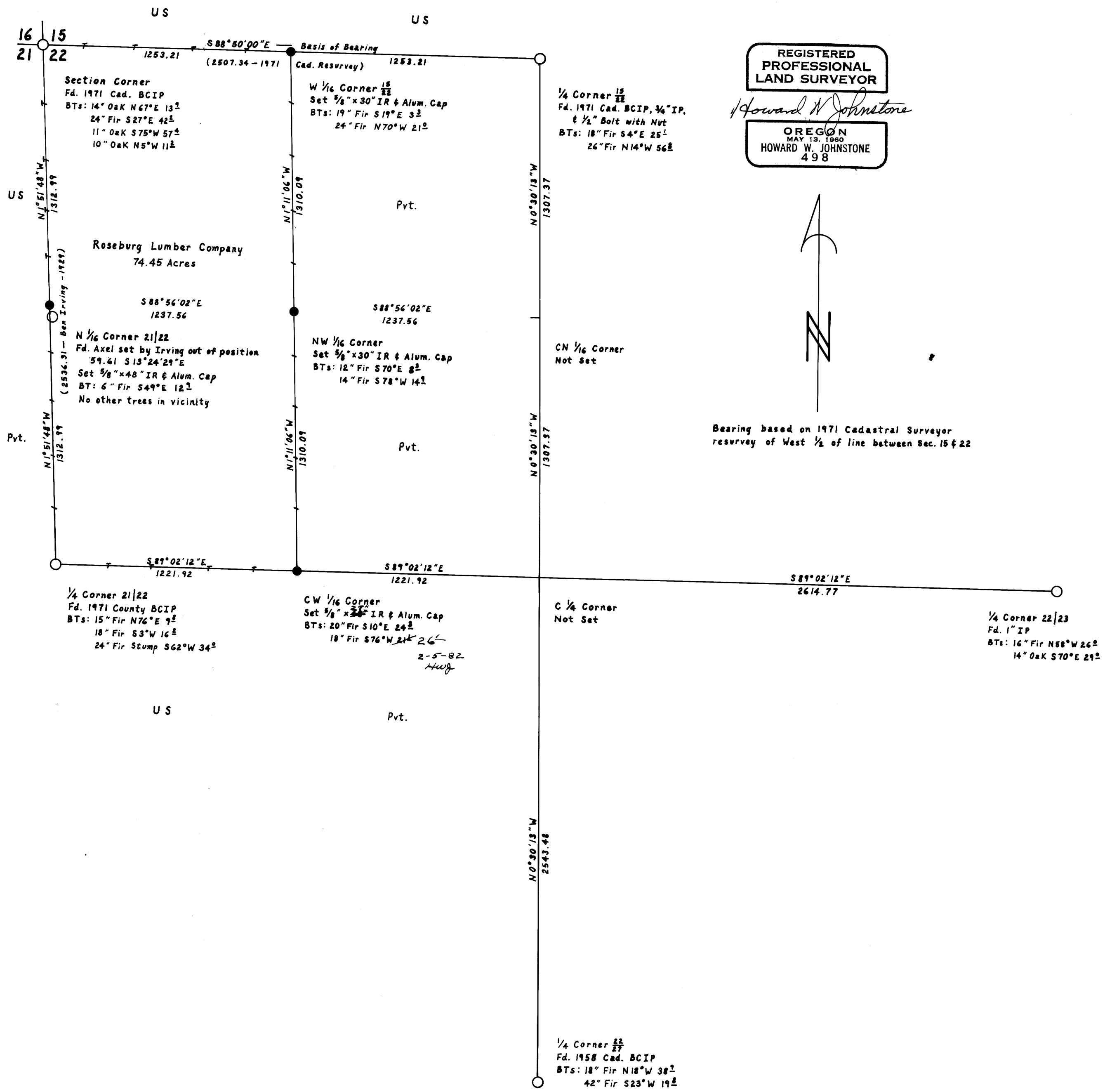
Scale: 1" = 400'

FILED &
RECEIVED &
JUN 10 1980
COUNTY SURVEYOR
BURBANK COUNTY, ORE
&

- Legend**
- Monument Found
 - Monument Set
 - Section or Subdivision Line
 - + Line Blazed & Painted
 - ⊢ Line Marked With Alum. Reference Tags

I ran a closed traverse in and around Section 22, T29S, R6W using a Jena 1 second theodolite and a Mac IE EDM. I achieved a precision of 1:37886 on the exterior and 1:13327 on the interior. I adjusted both traverses by the Crandall method. I set the corners by standard subdivision procedure.

Howard W. Johnstone P. O. Box 1088 Roseburg, Oregon



REGISTERED
PROFESSIONAL
LAND SURVEYOR

Howard W. Johnstone

OREGON
MAY 13, 1980
HOWARD W. JOHNSTONE
498



Bearing based on 1971 Cadastral Surveyor resurvey of West 1/2 of line between Sec. 15 & 22