

# Survey to establish the North and West property lines in the NW 1/4 of the NW 1/4, section 16, T27S, R7W, WM., Douglas County, Oregon

Date: May 1980 Scale 1"=200'

FOR: Jesse and Bonnie Charles

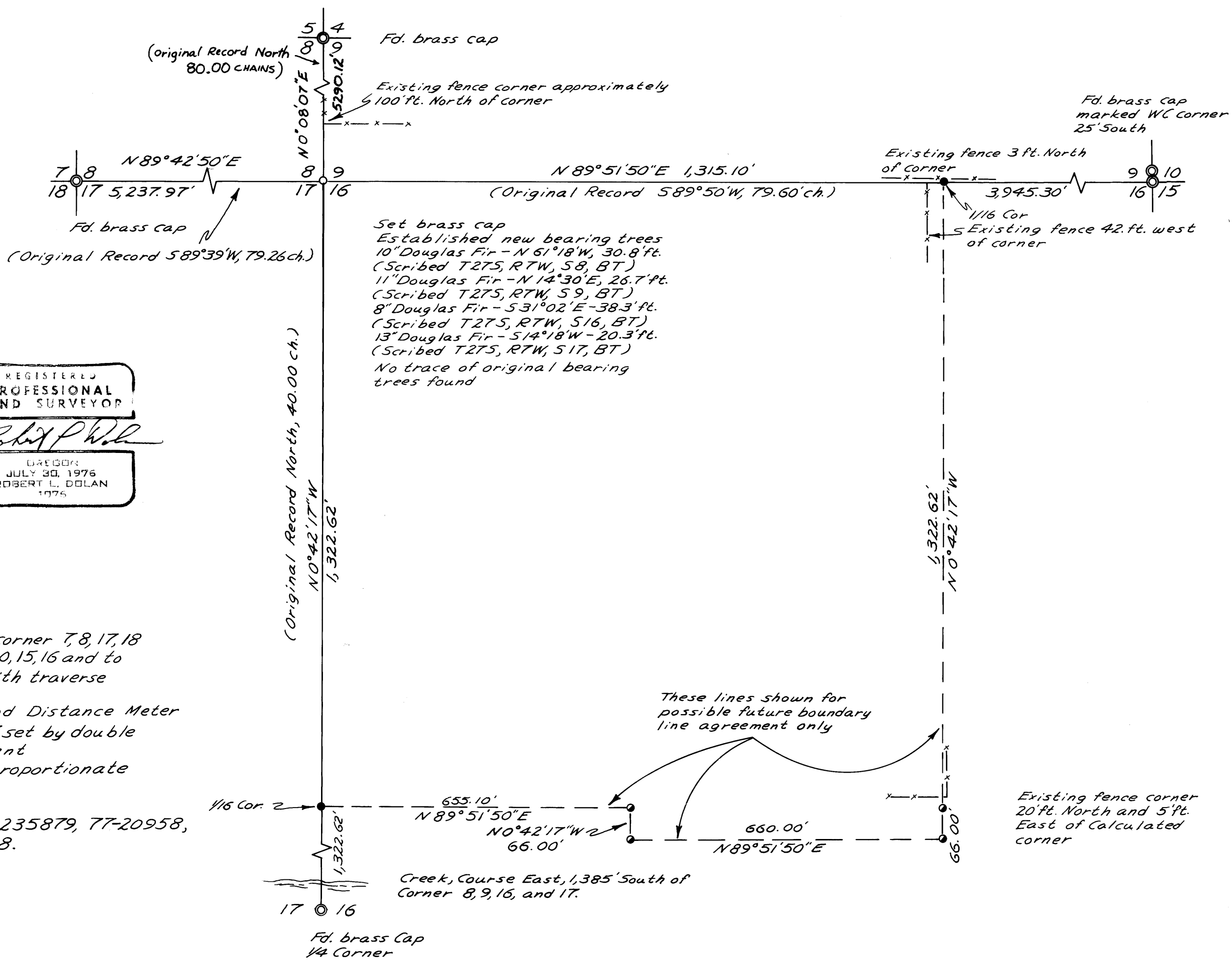
BY: Robert L. Dolan  
Rt. 1 Box 1820  
Sutherlin, OR. 97479

**LEGEND**

- Set 5/8" X 30" Iron Rod
- Calculated Point

Base Bearing M70-12

REGISTERED  
PROFESSIONAL  
LAND SURVEYOR  
*Robert L. Dolan*  
OREGON  
JULY 30, 1976  
ROBERT L. DOLAN  
1976



**NARRATIVE**

Traverse ran from Section corner 7, 8, 17, 18 to W.C. for Section corner 9, 10, 15, 16 and to 1/4 corner of 16, 17. Closed with traverse from M70-12

Instruments: Theodolite and Distance Meter

Section corner 8, 9, 16, and 17 set by double proportionate measurement

1/16 corner set by single proportionate measurement

References:  
Map No. M70-12, Deed No. 235879, 77-20958, 76-7670 and Vol. 90 pg. 498.  
Tax Acct. No. 9359.00

M83-6.9

MAP T27S, R7W, S16