

COUNTY SURVEYORS FILE DATA  
DO NOT REMOVE FROM OFFICE

FILED *p*  
RECEIVED *JWH*

APR 14 1980

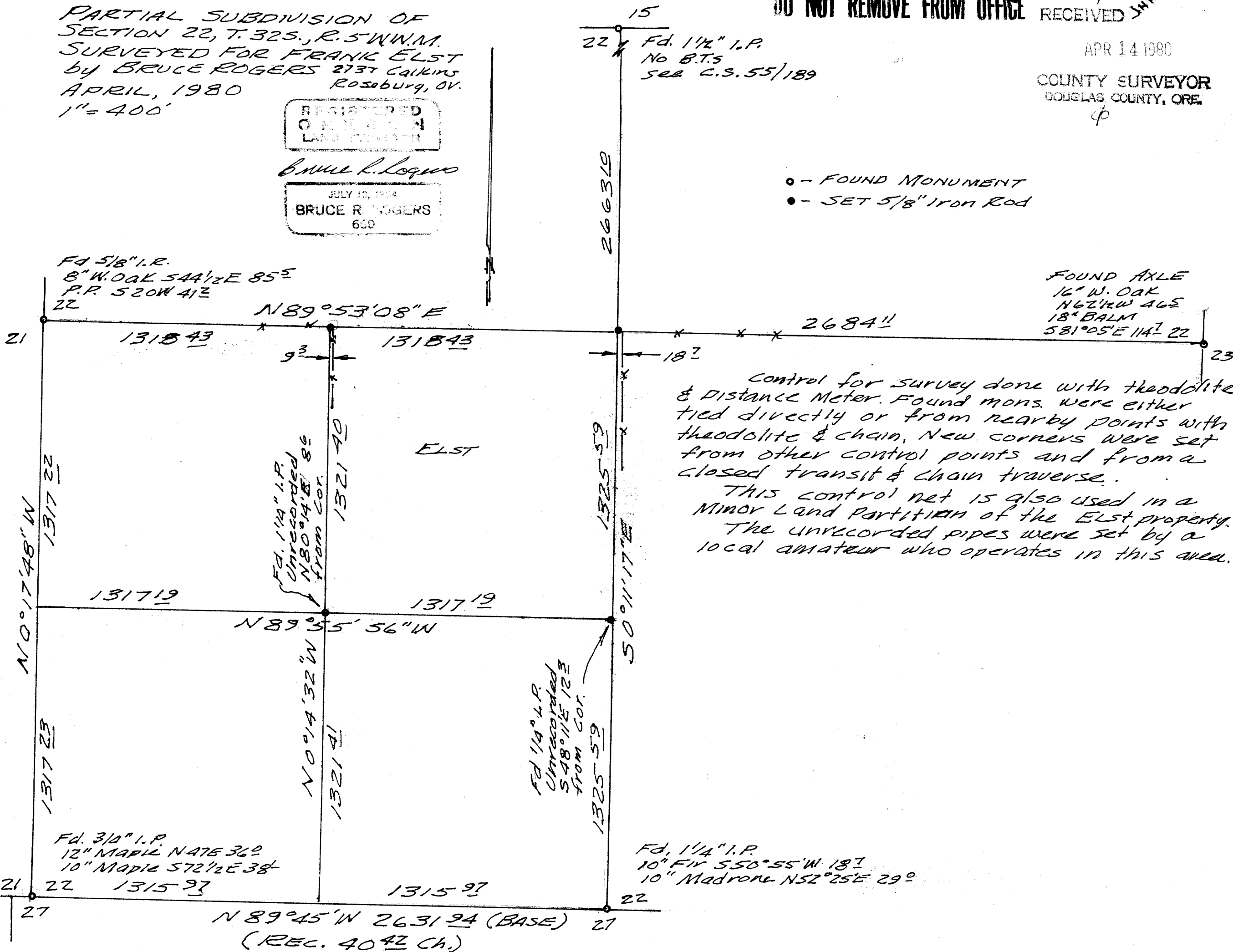
COUNTY SURVEYOR  
DOUGLAS COUNTY, ORE.

PARTIAL SUBDIVISION OF  
SECTION 22, T. 32S., R. 5W.W.M.  
SURVEYED FOR FRANK ELST  
by BRUCE ROGERS 2737 Calkins  
Roseburg, OR.  
APRIL, 1980  
1" = 400'

REGISTERED  
LAND SURVEYOR

*Bruce R. Rogers*

JULY 12, 1984  
BRUCE R. ROGERS  
660



- - FOUND MONUMENT
- - SET 5/8" IRON ROD

FOUND AXLE  
16" W. OAK  
N 62° 12' W 46'  
18" BALM  
S 81° 05' E 114' 22"

Control for survey done with theodolite & distance Meter. Found mons. were either tied directly or from nearby points with theodolite & chain. New corners were set from other control points and from a closed transit & chain traverse.

This control net is also used in a minor land partition of the Elst property. The unrecorded pipes were set by a local amateur who operates in this area.

MAP FILE 183-6

MAP FILE 183-6