

FILED *b*  
RECEIVED *jk*

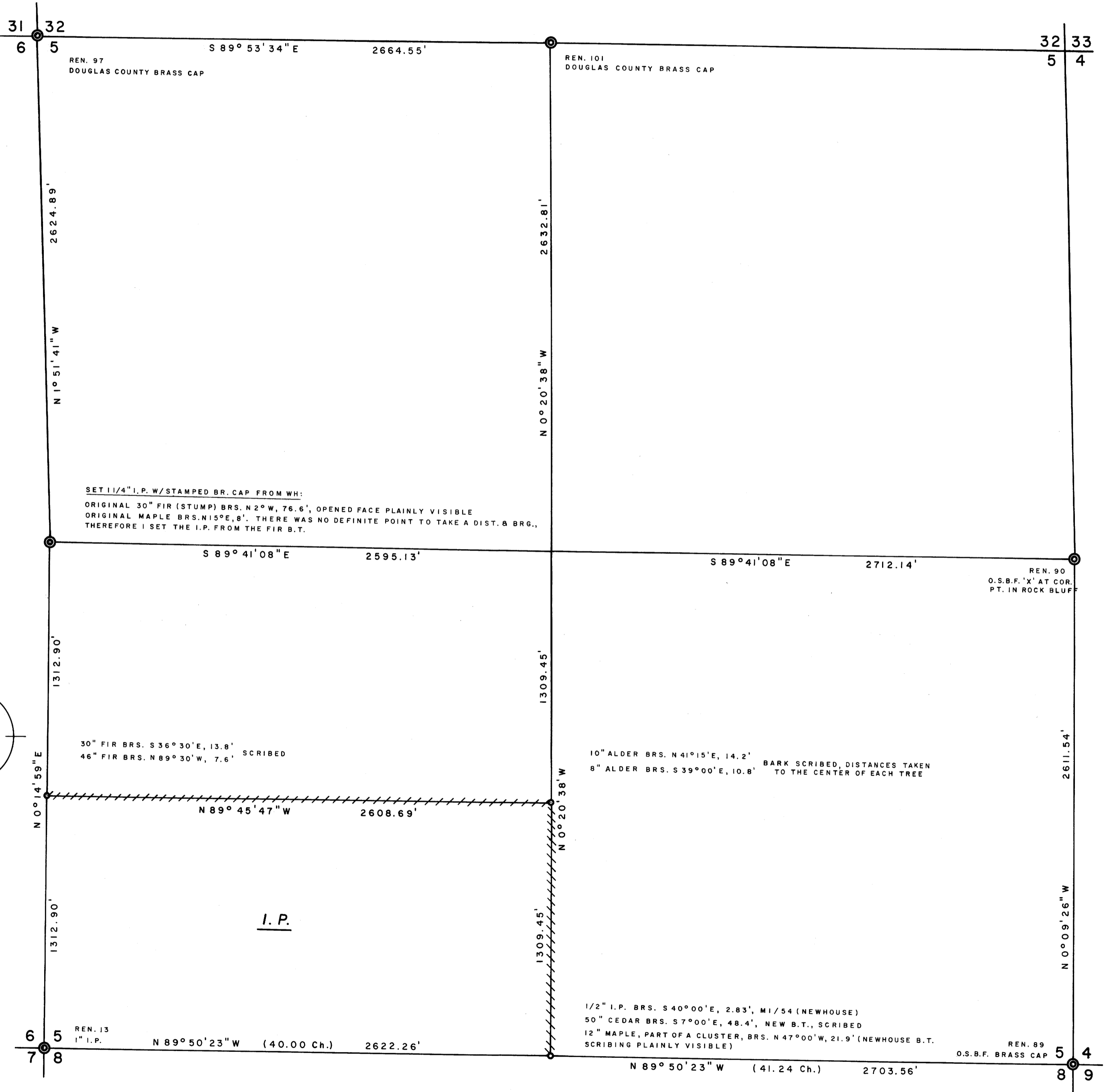
MAY 21 1980

COUNTY SURVEYOR  
DOUGLAS COUNTY, ORE.

*b*

# PROPERTY SURVEY FOR INTERNATIONAL PAPER CO.

SEC. 5, T22S, R11W  
SCALE 1" = 400'      MAY 1980



### LEGEND

- CORNERS FOUND
- SET 1/4" I.P.'S W/STAMPED BRASS CAPS
- PROPERTY LINES ESTABLISHED, 1/2" I.R.'S WITH ATTACHED ALUMINUM SIGNS

### NOTES

1. BASIS FOR BEARING TRUE FROM SOLAR OBSERVATION, DECL. 18° 30'
2. DISTANCES ARE TAKEN TO A 50d NAIL IN THE FACE OF EACH BEARING TREE, UNLESS NOTED.
3. THIS SURVEY WAS MADE IN ACCORDANCE WITH THE B.L.M. MANUAL OF SURVEY INSTRUCTIONS.

**REGISTERED  
PROFESSIONAL  
LAND SURVEYOR**

*Richard J. Hintz*

**OREGON**  
MAY 13, 1980  
**RICHARD J. HINTZ**  
497

RICHARD J. HINTZ  
1890 N. 14th ST., COOS BAY, OREGON