

SURVEY FOR U. S. FOREST SERVICE

SECTION I, T. 32 S., R. 3 W., W.M., DOUGLAS COUNTY, OREGON

TILLER LAND SURVEY NO. 39 - CONTRACT NO. 53-04HI-9-7652 N

CHICKERING / GREEN EMPIRE INC.

APRIL, 1980

360 S.E. "H" ST., GRANTS PASS, OREGON

FILED &
RECEIVED *BS*

MAY 20 1980

COUNTY SURVEYOR
DOUGLAS COUNTY, ORE.

Found: 12"x18"x8" stone with "1/4" clearly chiseled on N. face.
Set an aluminum cap in the position of the stone stamped as shown.
Fd. B.T.'s: 52" Fir stump - N 40° 30' W - 75.3' } scribing visible
19" White Fir - N 72° 15' E - 111.0'
New B.T.: 6" Madrone - N 26° 15' W - 65.5'
scribed "T315R2W 1/4 531" "BT"
A 1" Iron Pipe bears N 33° W, 4.15'
(see C.S. # 42-392)

(1895 G.L.O. East 40.00 CH. = 2640')
(1906 G.L.O. East 41.9B CH. = 2770.68')
S 89° 54' 24.5" W 2654.74' = 809.166 m.

2529.53' = 771.002 m. (1906 G.L.O. 40.00 CH. = 2640')

125.21' = 38.164 m.

HISTORY OF SURVEYS

- The east line of section 2, T. 32 S., R. 3 W., W.M. was surveyed by William H. Byars in 1812 under Contract No. 152.
- The south line of Section 36, T. 31 S., R. 3 W., was surveyed by William M. Bushey in 1895 under Contract No. 620.
- The west line of Section 6, T. 32 S., R. 2 W., was surveyed by Charles L. Campbell in 1903 under Contract No. 747.
- The boundary lines of Section 1, T. 32 S., R. 3 W., were surveyed by Fred Mensch in 1906 under Contract No. 757.
- The south line of Section 31, T. 31 S., R. 2 W., was surveyed by Fred Mensch in 1909 under Contract No. 766.
- The north line of Section 12, T. 32 S., R. 3 W., was surveyed by Don E. Garrett in 1972 under U.S.F.S. Contract No. 003396 N (C.S. # M 44-62).

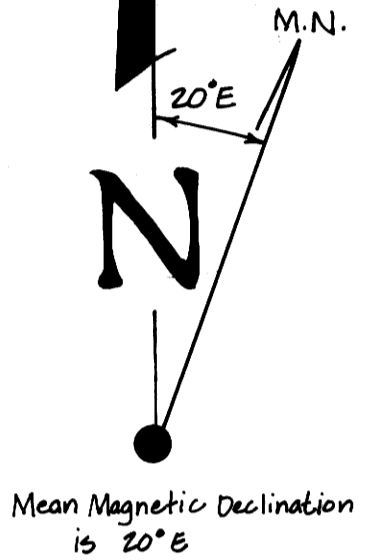
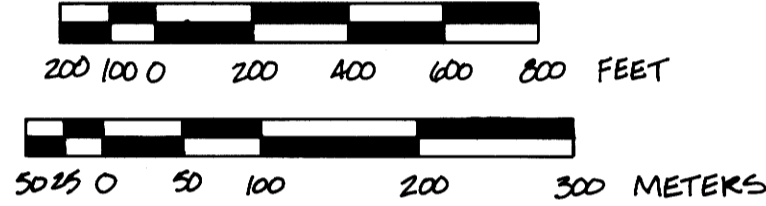
LEGEND

- Monuments found.
- ⊙ Monuments set consist of a 2 1/2" x 30" aluminum pipe, flared at the bottom, with a 2 1/2" aluminum cap.
- () Data of record.
- True line posted with fiberglass fence posts and government property signs.

Bearings based on a solar observation taken November 9, 1979, near the W. 1/4 corner of S. 2, T. 32 S., R. 3 W., W.M.
All new B.T.'s also marked with a 3/4" brass disc stamped "RLS 601" nailed into the lower blaze. Old B.T.'s all show blazes.

Survey Method: Theodolite & Electronic Distance Meter

SCALE: 1" = 400'



NW 1/4 - 158.29 Acres

U.S.
(Section 1 except S 1/2 of SW 1/4)

N 1/2 of SW 1/4 - 77.62 Acres

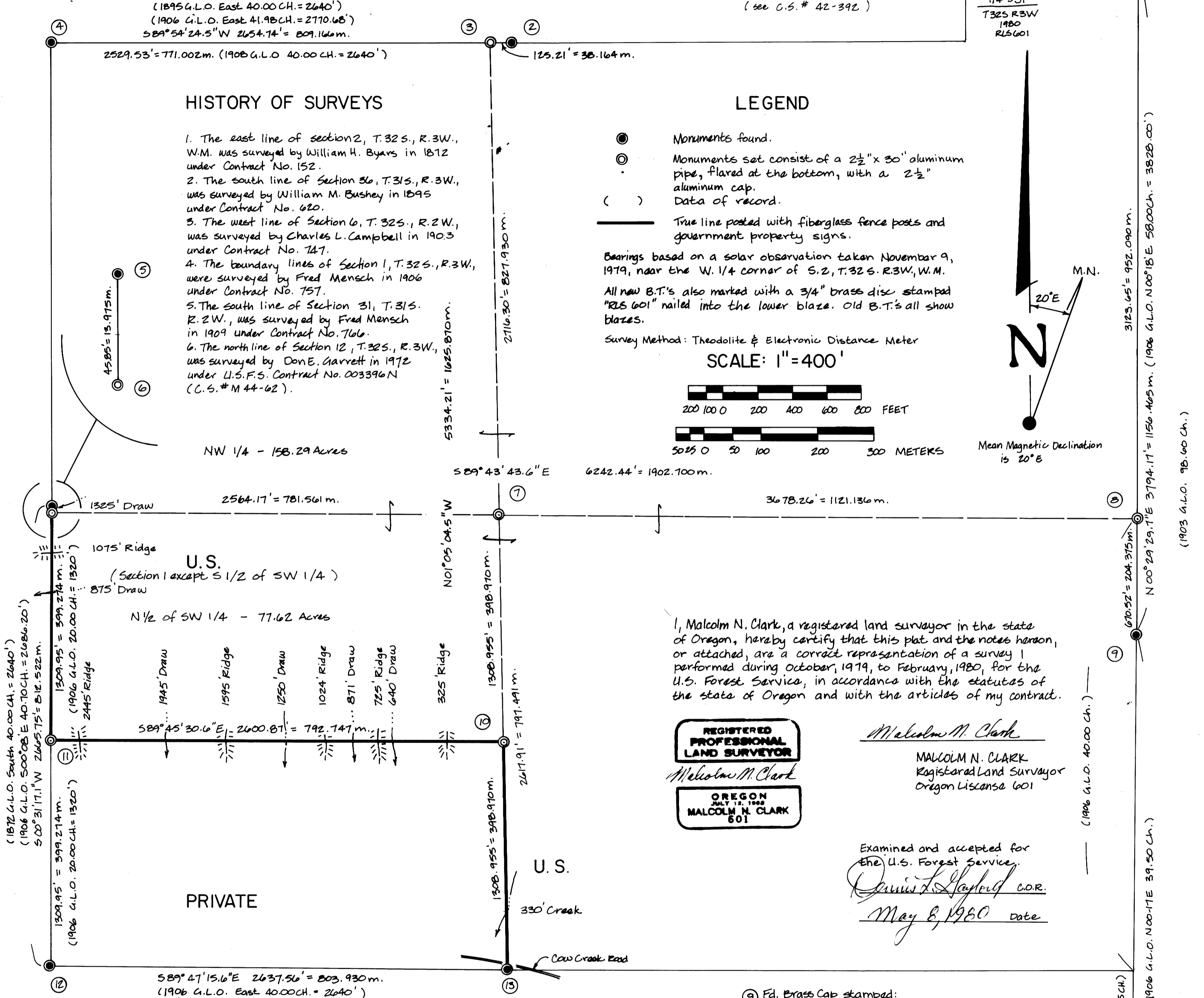
PRIVATE

I, Malcolm N. Clark, a registered land surveyor in the state of Oregon, hereby certify that this plat and the notes hereon, or attached, are a correct representation of a survey I performed during October, 1979, to February, 1980, for the U.S. Forest Service, in accordance with the statutes of the state of Oregon and with the articles of my contract.



Malcolm N. Clark
MALCOLM N. CLARK
Registered Land Surveyor
Oregon License 601

Examined and accepted for
the U.S. Forest Service.
James L. Gaylord C.O.R.
May 8, 1980 date



- ① Fd. 3/4" Iron Pipe next to 10"x10"x9" stone. Set aluminum cap at location of pipe stamped:
T315R2W 531 Fd. B.T.'s:
51 | 56 5" Madrone - N 38° 25' W - 15.8'
R3W | R2W 6" Madrone - S 83° 55' E - 9.8'
T325 10" Madrone - S 26° 35' E - 34.1'
1980 17" Douglas Fir - S 19° 35' W - 33.6'
RLS 601
- ② Fd. 14"x10"x4" corner stone (S1/4 536 only)
Fd. B.T.: 40" Ponderosa Pine - S 23° 45' E - 82.5'
- ③ Set aluminum cap by proportion stamped:
T315R3W New B.T.'s:
1/4 51 14" Douglas Fir - S 16° 15' E - 49.2'
T325 R3W 16" Douglas Fir - S 38° 45' W - 39.0'
1980 Both scribed "T325R3W 1/4 51" "BT"
RLS 601
- ④ Fd. Brass Cap stamped:
County Surveyors Office Fd. B.T.'s:
T315 535 | 536 6" Madrone - S 41° 10' E - 26.9'
52 | 51 30" Ponderosa Pine - S 31° 30' W - 103.6'
T325 40" Ponderosa Pine - N 41° 40' W - 77.1'
R3W 1980 6" Madrone - N 66° 15' E - 5.2'
1/4 51 RLS 601

- ⑤ Fd. Brass Cap stamped:
County Surveyors Office Fd. B.T.'s:
T325 R3W 12" Douglas Fir - S 68° 50' W - 49.0'
1/4 52 ONLY 6" Douglas Fir - N 40° 55' W - 24.8'
RESTAMP An unrecorded 1" I.P. bears
1969 S 85° 15' E, 12.37'
- ⑥ Set aluminum cap by proportion stamped:
T325 R3W New B.T.'s:
1/4 51 10" Douglas Fir - S 59° 25' E - 27.0'
1980 11" Douglas Fir - N 29° 20' E - 15.6'
RLS 601 Both trees scribed "T325R3W 1/4 51" "BT"
- ⑦ Set aluminum cap by proportion stamped:
T325 R3W New B.T.'s:
C1/4 51 13" Ponderosa Pine - N 34° 10' W - 37.2'
1980 12" Madrone - S 85° 50' E - 37.1'
RLS 601 Both scribed "T325R3W C1/4 51" "BT"
- ⑧ Set aluminum cap by proportion stamped:
T325 R3W New B.T.'s:
1/4 51 24" Douglas Fir - N 33° 30' W - 42.8'
1980 6" Douglas Fir - S 09° 40' E - 41.4'
RLS 601 Both scribed "T325R3W 1/4 51" "BT"

- ⑨ Fd. Brass Cap stamped:
T325 Fd. B.T.'s:
R3W | R2W 18" Fir - S 19° E - 55.9'
1/4 56 9" Fir - N 27° E - 13.0'
1972 RPLS 544
- ⑩ Set aluminum cap by proportion stamped:
T325 R3W New B.T.'s:
51 | 51 9" Douglas Fir - N 15° 05' W - 96.1'
1980 8" Douglas Fir - S 85° 10' E - 22.4'
RLS 601 Both scribed "T325R3W 51/14 51" "BT"
- ⑪ Set aluminum cap by proportion stamped:
T325 R3W New B.T.'s:
51 | 1/6 6" Douglas Fir - N 16° 55' E - 19.1'
1980 51 8" Knobcone Pine - N 89° 25' E - 90.4'
RLS 601 Both scribed "T325R3W 51/14 51" "BT"
- ⑫ Fd. Brass Cap stamped:
County Surveyors Office Fd. B.T.'s:
T325 R3W 18" Hemlock - S 01° - 20' W - 91.2'
52 | 51 24" Douglas Fir - N 86° 35' W - 204.3'
51 | 512 1959 12" Knobcone Pine - N 12° 40' E - 555.0' - scribed "T325R3W 51" "BT"
1959 New B.T.'s: 18" White Fir - S 03° 35' E - 250.7' - scribed "T325R3W 512" "BT"
- ⑬ Fd. Brass Cap stamped:
County Surveyors Office Fd. B.T.'s:
T325 R3W 18" Douglas Fir - S 54° 35' E - 93.6'
1/4 51 18" Douglas Fir - N 84° 30' E - 42.7'
1969 RLS 601

M 83-53

58/227 N

58/227 N
M 83-53

Survey Number M 83-53

Survey Narrative To Comply With O.R.S. 209.250

Location: Section 1, T.32S.,R.3W., W.M.

Survey for: U.S. Forest Service, Umpqua National Forest
Roseburg, Oregon. Tiller Land Survey No. 39
Contract No. 53-04H1-9-7652N

Survey by: CHICKERING/GREEN EMPIRE, INC.
360 S.E. "H" Street Suite B
Grants Pass, Oregon 97526
(Malcolm N. Clark, R.L.S. 601)

Date: December 1979 to April 1980

Equipment: Wild T-16 theodolite and K.& E. AutoRanger

Purpose: To survey the boundaries of certain U.S. Forest Service lands in Section 1, to mark and post the boundary lines of certain U.S. Forest Service lands, to establish and monument certain corners of U.S. Forest Service lands, and to establish and monument the North and East one-quarter corners of Section 1, and to perpetuate the northeast corner of Section 1, T.32S.,R.3W., and the South one-quarter corner of Section 31, T.31S., R.2W.

Procedure: A solar observation was taken near the West one-quarter corner of Section 2 and was used as a bearing base for this survey. A closed traverse was run around the exterior boundary, measuring all angles by repetition, a minimum of two observations, and measuring all distances with an E.D.M., both in feet and meters. All existing controlling corners were tied by this traverse. All missing controlling corners were proportioned using Fred Mensch's plat dated June 29, 1906, as the basis of the proportions. The property lines shown on the survey map were then run and closed onto the exterior boundary traverse. The property lines shown on the map are marked by 6 foot orange fiberglass fence posts and Forest Service boundary signs. All corner monuments set in this survey are 2 1/2 inch aluminum caps on a 2 inch (I.D.) by 30 inch flared aluminum pipe, set approximately 24 inches in the ground.



58/227-3
C. S. File No. 58/180