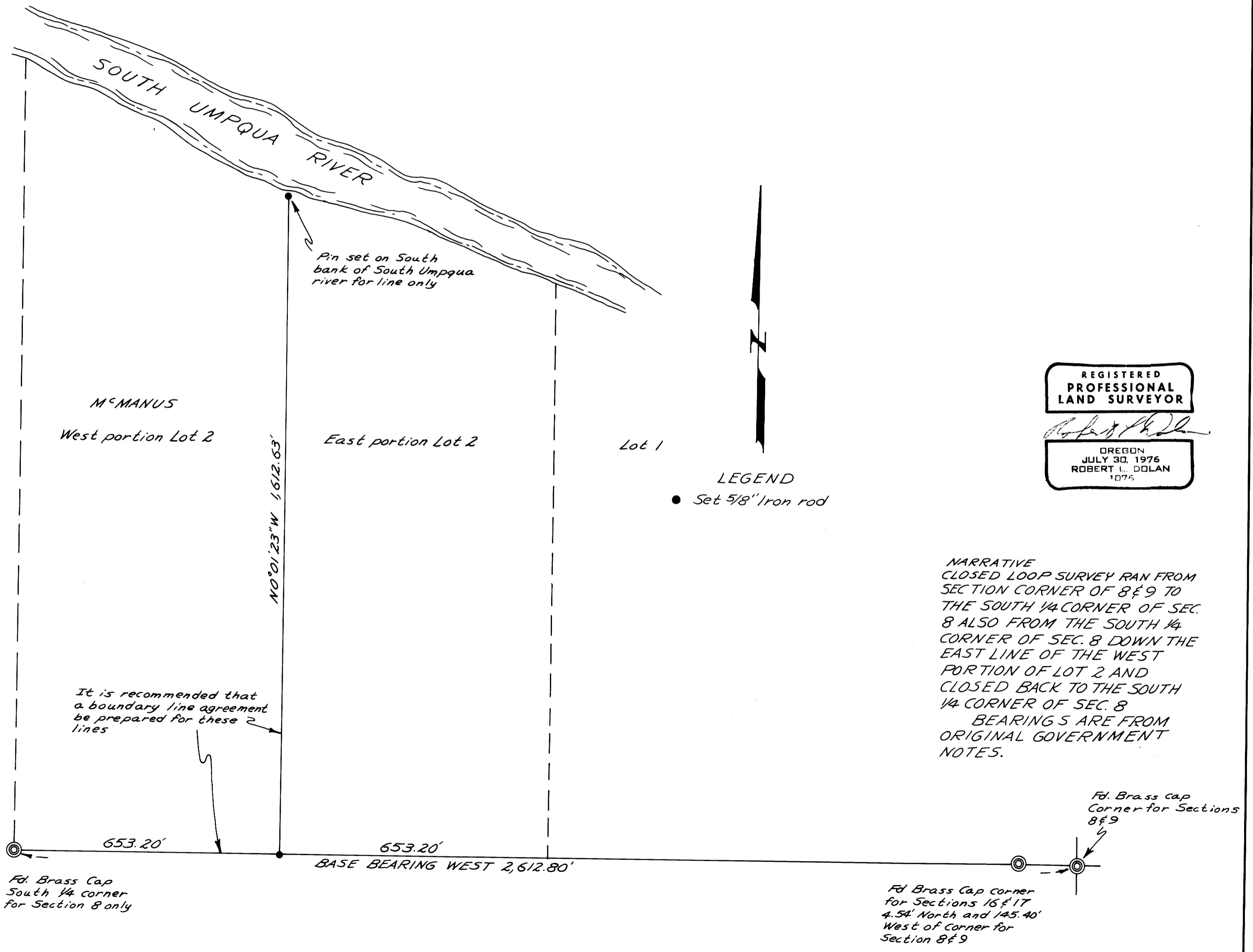


SURVEY TO ESTABLISH THE EAST LINE OF THE WEST PORTION OF LOT 2 IN THE S.E. 1/4 OF SECTION 8, T25S, RTW, W.M. DOUGLAS COUNTY, OREGON

**COUNTY SURVEYORS FILE DATA
DO NOT REMOVE FROM OFFICE**

APRIL 1980 SCALE 1"=200'
FOR: JOHN McMANUS
BY: ROBERT L. DOLAN
RT. 1 BOX 1820
SUTHERLIN, OR.

FILED ϕ
RECEIVED *dh*
APR 14 1980
COUNTY SURVEYOR
DOUGLAS COUNTY, ORE.
 ϕ



MAP FILE M83-5

MAP FILE M83-5