

C-2-EBW

7/2/85

COUNTY SURVEYORS FILE DATA
DO NOT REMOVE FROM OFFICE

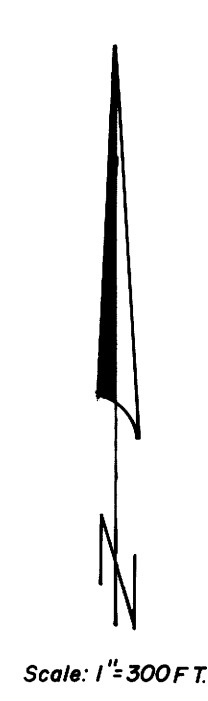
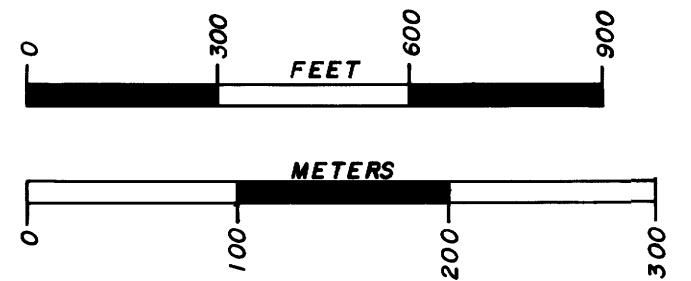
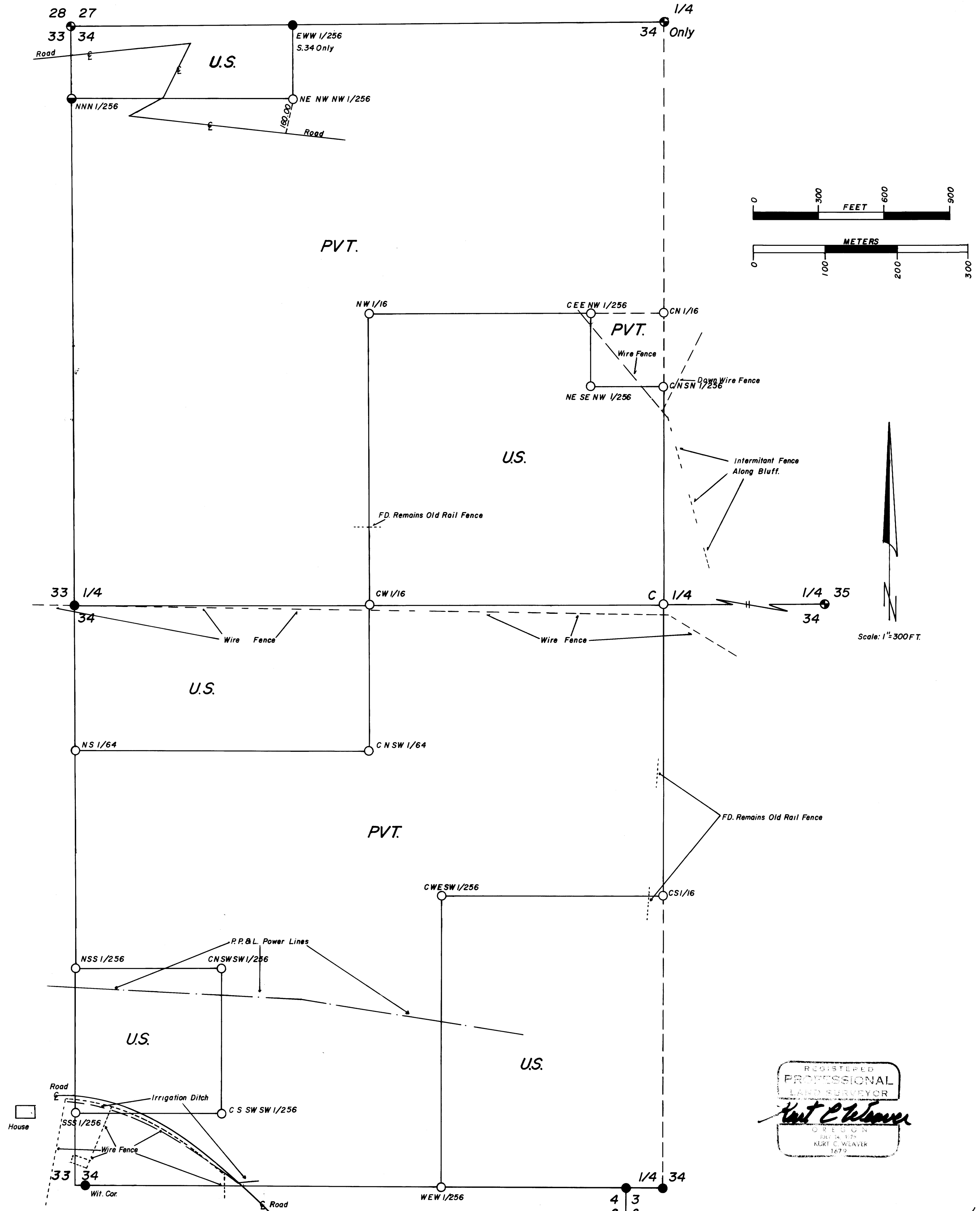
FILED RECEIVED *jh*

APR 14 1980

COUNTY SURVEYOR
DOUGLAS COUNTY, ORE.

MAN-MADE IMPROVEMENTS
LOCATED IN SECTION 34, T.31S., R.1W., W.M.,
DOUGLAS COUNTY, OREGON.

Ref. U.S.F.S. Contract Number
53-04HI-9-7641N



REGISTERED
PROFESSIONAL
LAND SURVEYOR
Kurt C. Weaver
OREGON
JULY 14, 1979
KURT C. WEAVER
1679