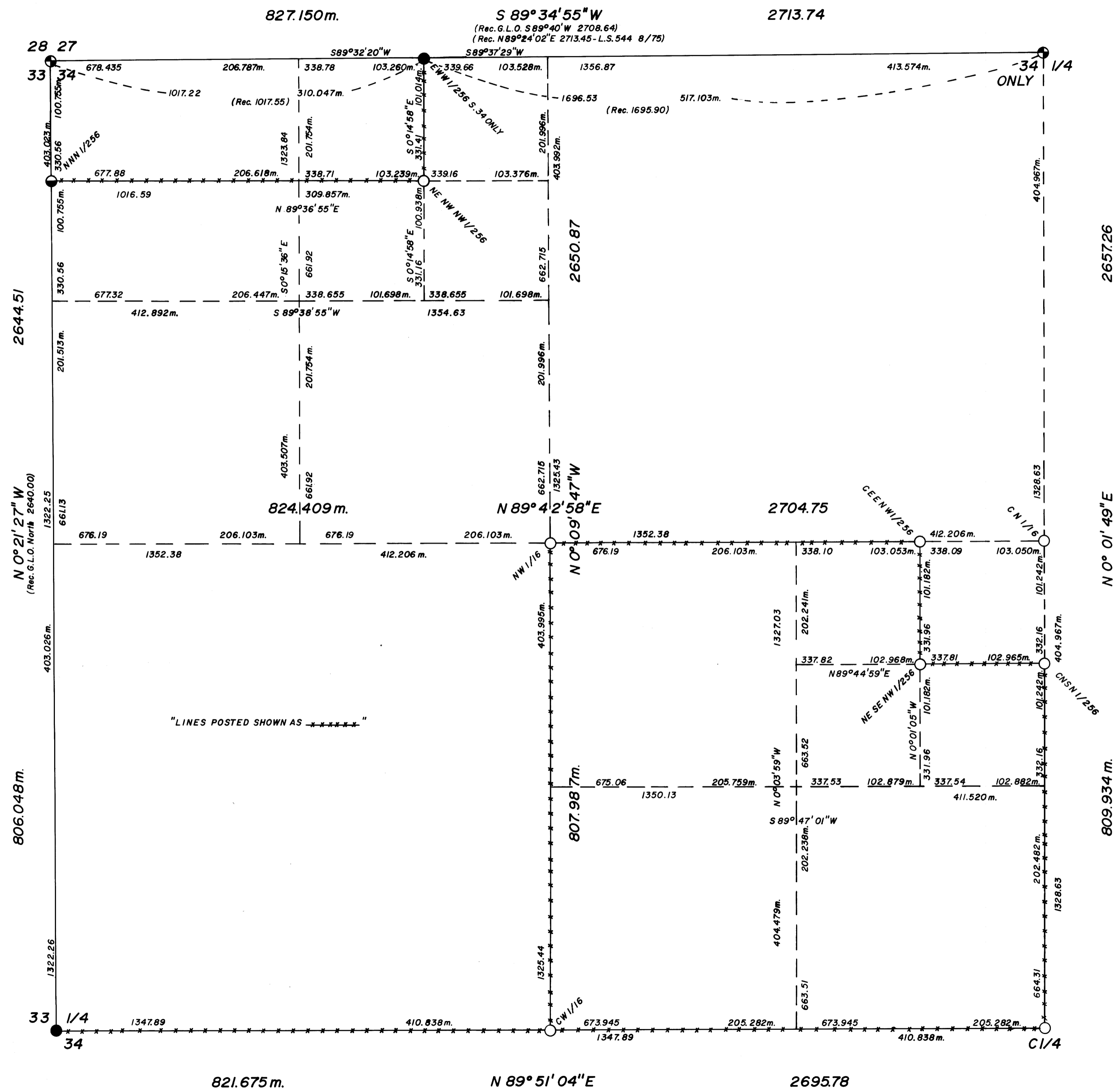
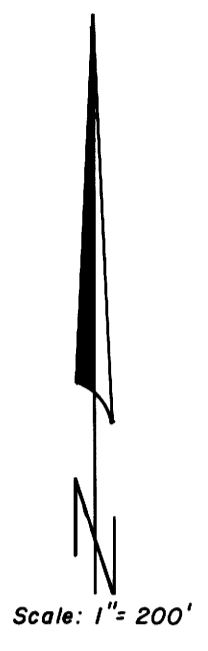
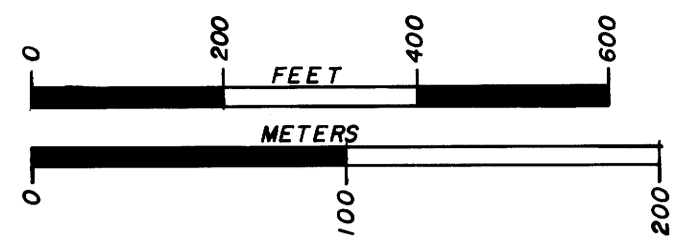


COUNTY SURVEYORS FILE DATA
DO NOT REMOVE FROM OFFICE
 DETAIL OF THE NW 1/4 OF SECTION 34,
 T.31S., R.1W., W.M., DOUGLAS COUNTY, OREGON.

FILED &
 RECEIVED *vr*
 APR 14 1980
 COUNTY SURVEYOR
 DOUGLAS COUNTY, ORE.
 K5



- Bearing Trees:**
- NW Sec. Cor. - W. Fir 16" dia. bears S14°16'W 51.1 ft. (Rec. Hemlock S15°W 51.0 ft.)
 - D. Fir 21" dia. bears N69°29'W 16.9 ft. (Rec. N68°W 17.3 ft.)
 - W. Fir 15" dia. bears N30°24'E 42.1 ft. (Rec. N31°E 42.0 ft.)
 - Maple 16" dia. bears S30°41'E 22.6 ft. (Rec. S31°E 31.7 ft. Slope)
- N 1/4**
- D. Fir Staub 8" dia. bears S71°11'E 34.3 ft. (Rec. S75°E 34.3 ft.)
 - W. Fir 8" dia. bears S48°40'E 59.9 ft. (Rec. S50°30'E 60.0 ft.)
 - D. Fir 24" dia. bears S38°11'W 17.7 ft. (Rec. S36°W 17.8 ft.)
- EW 1/256**
- W. Fir 16" dia. bears S88°01'W 44.0 ft. (Rec. S87°W 43.9 ft.)
 - D. Fir 12" dia. bears S73°44'W 27.7 ft. (Rec. S73°W 27.7 ft.)
 - Metal Post w/ Bound. & Attn. Sign - East 4.5 ft.
- New Bearing Trees:**
- NW 1/16 - P. Pine 10" dia. bears N88°25'E 13.8 ft.
 - B. Oak 16" dia. bears N26°20'W 5.5 ft.
 - CN 1/16 - P. Pine 13" dia. bears N1°37'W 175.0 ft.
 - Rock w/ "X" Marked on top, Painted Red, Dimensions 27"x20"x10" bears S64°58'E 65.1 ft.
 - NNN 1/256 - D. Fir 18" dia. bears S50°58'W 14.4 ft.
 - D. Fir 21" dia. bears N10°23'E 22.2 ft.
 - C.E.E. NW 1/256 - W. Oak 16" dia. bears N11°09'E 18.6 ft.
 - Twin B. Oak 11" dia. bears N69°09'W 25.7 ft.
 - C.N.S.N 1/256 - B. Oak 9" dia. bears N60°26'W 9.5 ft.
 - B. Oak 19" dia. bears S16°09'E 28.1 ft.
 - NE SE NW 1/256 - D. Fir 27" dia. bears S55°07'E 34.7 ft.
 - D. Fir 15" dia. bears S36°52'W 31.4 ft.
 - NE NW NW 1/256 - B. Oak 17" dia. bears S14°07'E 45.2 ft.
 - W. Fir 13" dia. bears N37°57'W 29.3 ft.

REGISTERED
PROFESSIONAL
 LAND SURVEYOR
Kurt C. Weaver
 OREGON
 JULY 14, 1978
 KURT C. WEAVER
 1679

Map File: M83-40
 C.S. File: 58/2164