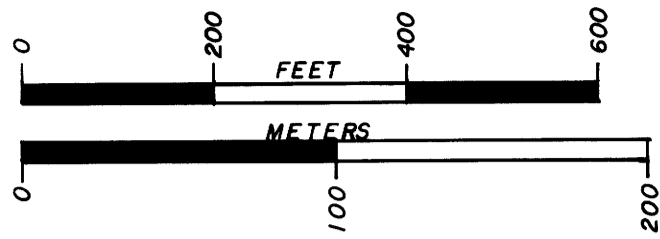
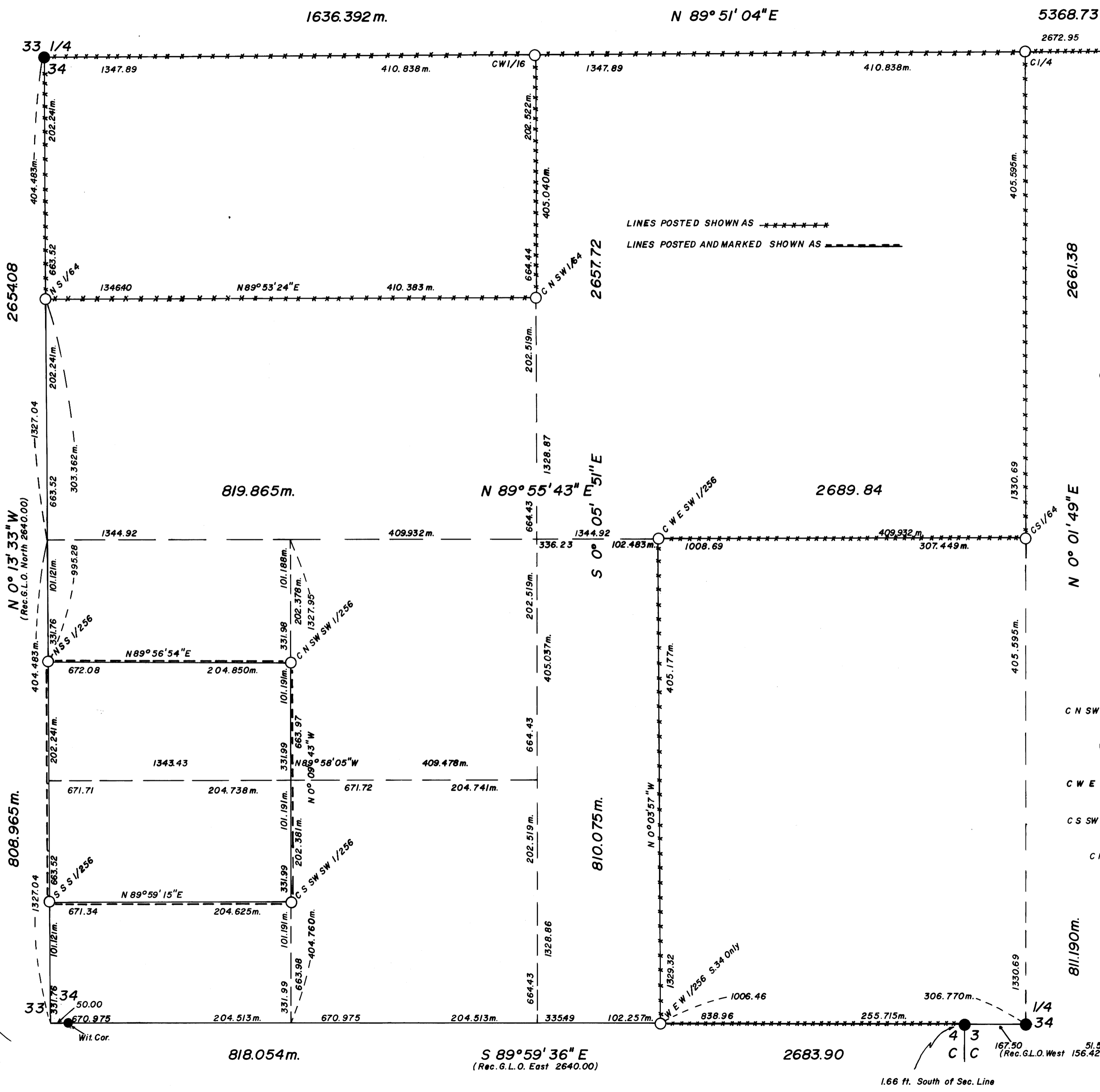


COUNTY SURVEYORS FILE DATA
 DO NOT REMOVE FROM OFFICE
 "DETAIL OF THE SW 1/4 OF SECTION 34,
 T.31S., R.1W., WM., DOUGLAS COUNTY, OREGON."



FILED ϕ
 RECEIVED *JK*
 APR 14 1980
 COUNTY SURVEYOR
 DOUGLAS COUNTY, ORE.

C.S. FILE 58/216N
 Map File M031-78



LINES POSTED SHOWN AS *****
 LINES POSTED AND MARKED SHOWN AS -----

- Bearing Trees:
- E 1/4 - D. Fir 14" dia. bears N 44° 17' E 14.3 ft. (Rec. N 43° E 14.2 ft.)
 Rotted Oak Stump bears S 70° 35' E 27.1 ft. (Rec. S 71° E 27.7 ft.)
 D. Fir 14" dia. bears S 9° 59' W 7.7 ft. (Rec. S 10° W 7.4 ft.)
 Rotted Oak Stump bears S 19° 25' W 47.3 ft. (Rec. S 20° W 48.2 ft.)
 - W 1/4 - W. Oak 14" dia. bears N 54° 23' W 9.3 ft. (Rec. N 52° W 9.8 ft.)
 D. Fir 50" dia. bears S 78° 10' E 44.7 ft. (Rec. S 80° E 45.5 ft.)
 D. Fir 8" dia. bears S 42° 56' E 12.2 ft. (Rec. S 44° E 12.2 ft.)
 - Wit. Cor. - Ash 10" dia. bears N 66° 08' W 16.7 ft. (Rec. N 66° W 16.8 ft.)
 Ash 10" dia. bears S 8° 45' W 11.5 ft. (Rec. S 6° 30' W 11.4 ft.)
 - Closing Corner - L. Oak 8" dia. bears S 73° 37' W 35.9 ft. (Rec. S 74° W 35.4 ft.)
 L. Oak 9" dia. bears N 41° 45' W 26.2 ft. (Rec. N 51° W 26.2 ft.)
 D. Fir 11" dia. bears N 50° 59' E 6.0 ft. (Rec. N 47° E 5.9 ft.)
 Madrone 14" dia. bears S 31° 22' E 14.0 ft. (Rec. S 35° E 13.2 ft.)
 - S 1/4 - D. Fir 16" dia. bears N 42° 28' W 20.5 ft. (Rec. N 42° W 20.6 ft.)
 S 34 Only - D. Fir 28" dia. bears N 71° 17' E 20.6 ft. (Rec. N 70° E 19.8 ft.)
- New Bearing Trees:
- C 1/4 - D. Fir 9" dia. bears S 72° 16' E 28.0 ft.
 D. Fir 14" dia. bears S 9° 45' W 25.3 ft.
 - CW 1/16 - D. Fir 9" dia. bears S 21° 52' W 10.5 ft. B. Oak 12" dia. bears N 14° 15' W 8.0 ft.
 B. Oak 10" dia. bears N 68° 55' W 26.8 ft.
 - CS 1/64 - D. Fir 12" dia. bears S 51° 09' E 14.4 ft.
 D. Fir 9" dia. bears S 22° 24' W 11.0 ft.
 - NS 1/64 - L. Cedar 7" dia. bears N 68° 07' W 11.9 ft.
 P. Pine 10" dia. bears N 46° 31' E 7.4 ft.
 - NSS 1/256 - D. Fir 11" dia. bears S 41° 27' E 6.9 ft.
 D. Fir 12" dia. bears N 26° 27' W 18.6 ft.
 - SSS 1/256 - B. Oak 11" dia. bears N 23° 51' E 43.1 ft.
 W. Oak 9" dia. bears N 16° 49' W 46.2 ft.
 - C N SW SW 1/256 - B. Oak 11" dia. bears N 37° 28' E 24.4 ft.
 Madrone 14" dia. bears N 66° 43' W 39.6 ft.
 - WEW 1/256 - W. Oak 9" dia. bears S 88° 41' W 55.5 ft. W. Oak 7" dia. bears N 15° 30' E 23.2 ft.
 W. Oak 18" dia. bears N 29° 10' W 53.1 ft.
 - C W E SW 1/256 - B. Oak 15" dia. bears N 31° 06' W 6.5 ft.
 L. Cedar 11" dia. bears S 67° 35' E 7.6 ft.
 - C S SW SW 1/256 - Madrone 8" dia. bears S 1° 24' W 8.1 ft.
 W. Oak 10" dia. bears N 83° 18' E 66.8 ft.
 - C N SW 1/64 - D. Fir 10" dia. bears S 88° 26' E 9.5 ft.
 D. Fir 10" dia. bears N 3° 56' W 14.9 ft.

Scale: 1" = 200'

REGISTERED
 PROFESSIONAL
 LAND SURVEYOR
Kurt Weaver
 OREGON
 JULY 14, 1978
 KURT C. WEAVER
 1679

C.S. FILE 58/216N
 MAP FILE M031-78