

# SURVEY IN THE SW 1/4 OF SEC. 29 T.24S. R.7W.W.M.

COUNTY SURVEYORS FILE DATA  
DO NOT REMOVE FROM OFFICE

FOR: PETE SERAFIN

BY: A A SURVEYING SERVICE, INC.  
P.O. BOX 454, ROSEBURG, OREGON 97470

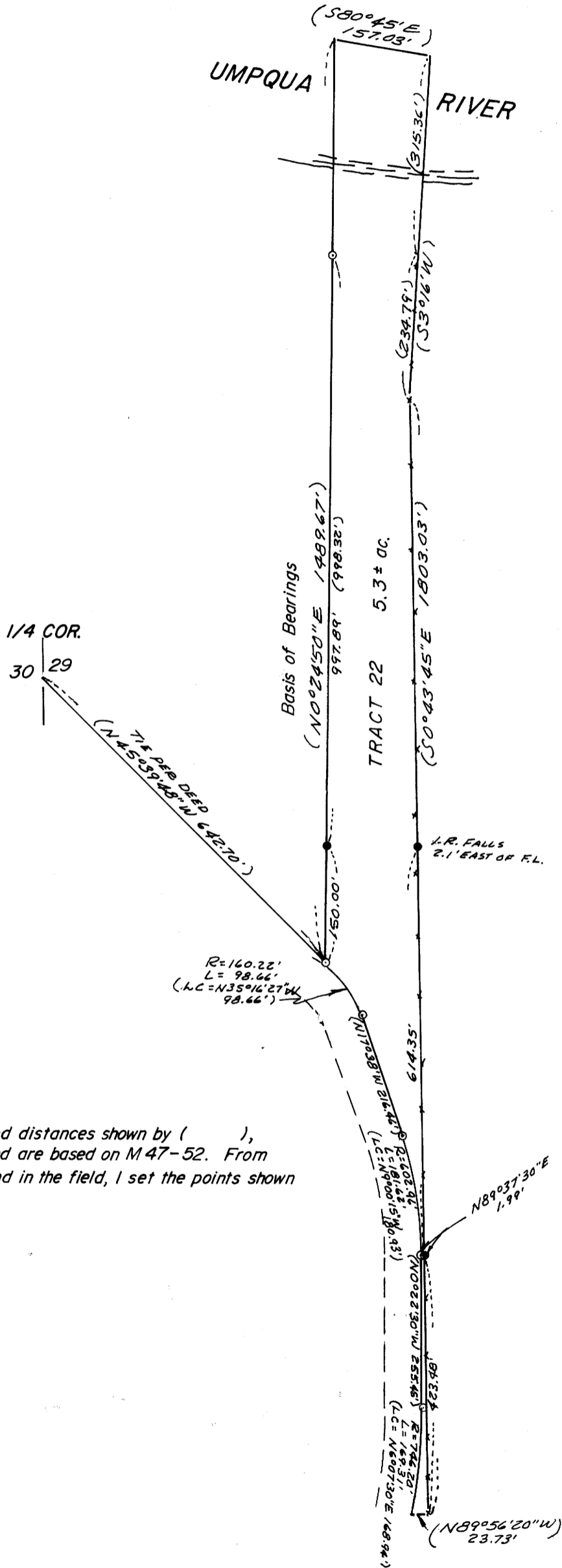
MAY 1980

SCALE: 1"=200'

FILED ✓  
RECEIVED ✓

MAY 14 1980

COUNTY SURVEYOR  
DOUGLAS COUNTY, ORE.



NARRATIVE:

All courses and distances shown by ( ), and points found are based on M 47-52. From the points found in the field, I set the points shown hereon.

LEGEND

- — Found 5/8" iron rod
- — Set 5/8" iron rod

REGISTERED  
PROFESSIONAL  
LAND SURVEYOR

*Eugene A. Bloom*

OREGON  
MAY 13, 1980  
EUGENE A. BLOOM  
492