

COUNTY SURVEYORS FILE DATA

DO NOT REMOVE FROM OFFICE

FILED ϕ
RECEIVED *dl*

SURVEY IN THE SE 1/4 SECTION 16, T.27 S., R 6 W., W. M.

APR 14 1980

Surveyed for Jack Heeter by Landline Development Co.

April, 1980

Scale 1" = 50'

COUNTY SURVEYOR
DOUGLAS COUNTY, ORE.

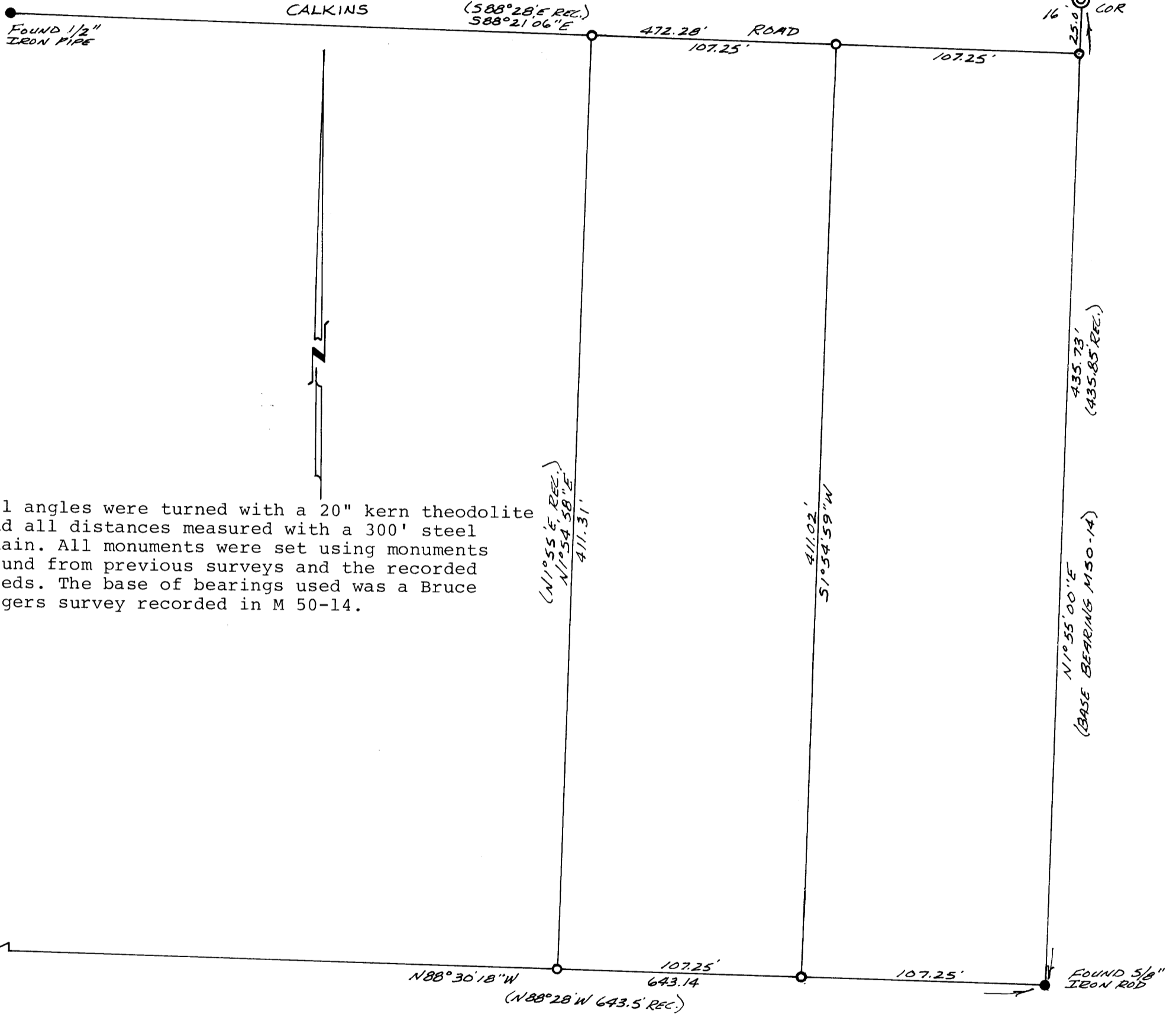
ϕ

• Set 5/8" Iron Rod

Landline Development Co.
PO Box 2191
Roseburg, Or. 672-5840

FOUND NAIL & RIBBON
IN A.C.

1/4 15
16 COR



Note: All angles were turned with a 20" kern theodolite and all distances measured with a 300' steel chain. All monuments were set using monuments found from previous surveys and the recorded deeds. The base of bearings used was a Bruce Rogers survey recorded in M 50-14.

REGISTERED
OREGON
LAND SURVEYOR

Bruce R. Rogers

JULY 10, 1964
BRUCE R. ROGERS
660