

MAJOR LAND PARTITION

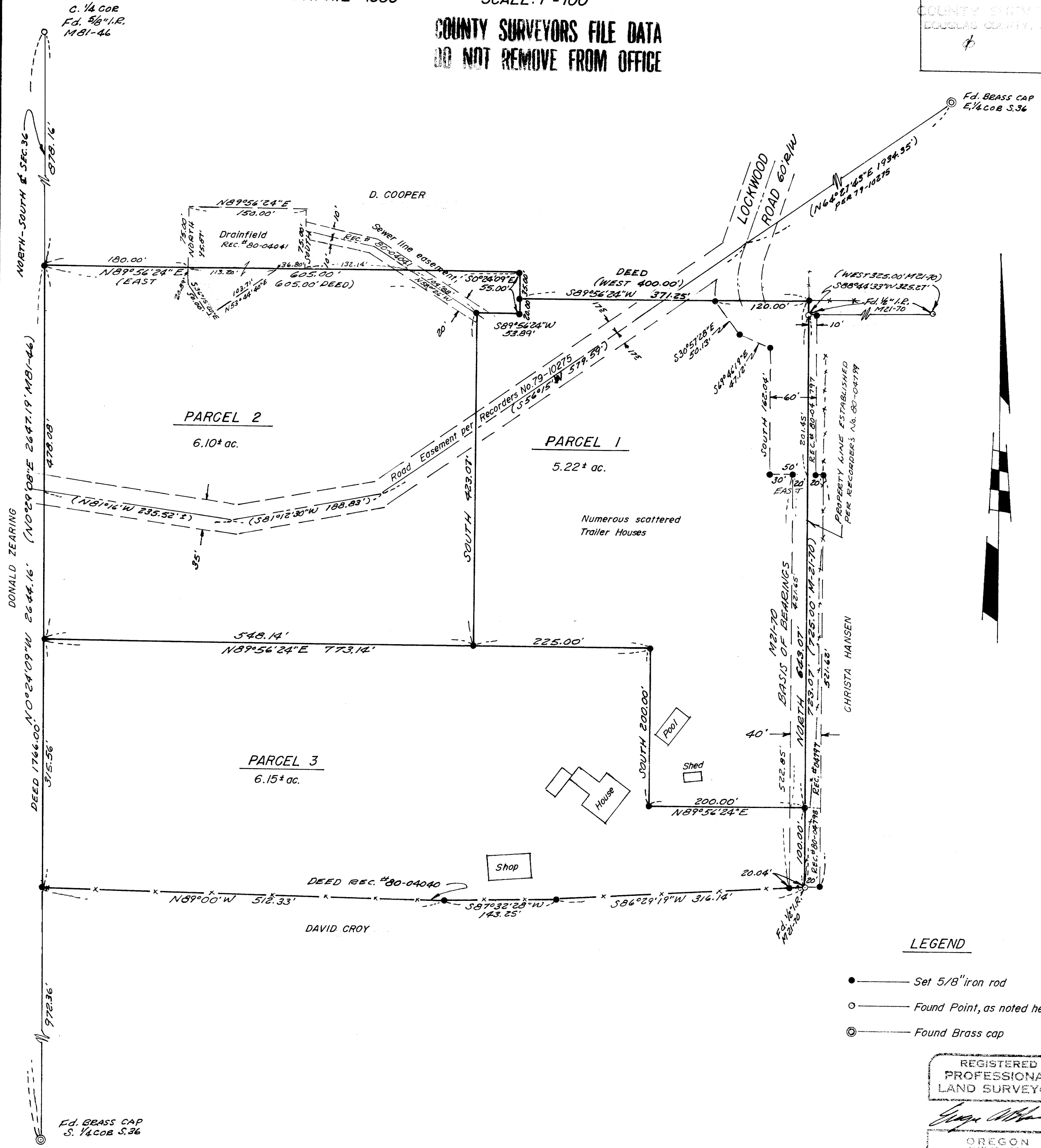
IN SECTION 36, T.28S. R.8W. W.M. - SE 1/4

APRIL 1980

SCALE: 1"=100'

COUNTY SURVEYORS FILE DATA
DO NOT REMOVE FROM OFFICE

FILED &
RECEIVED
APR 15 1980
COUNTY SURVEYOR
DOUGLAS COUNTY, OREGON



LEGEND

- — Set 5/8" iron rod
- — Found Point, as noted hereon
- ⊙ — Found Brass cap

REGISTERED
PROFESSIONAL
LAND SURVEYOR

Eugene A. Bloom

OREGON
MAY 13, 1960
EUGENE A. BLOOM
492

136 6. pg 53 B