

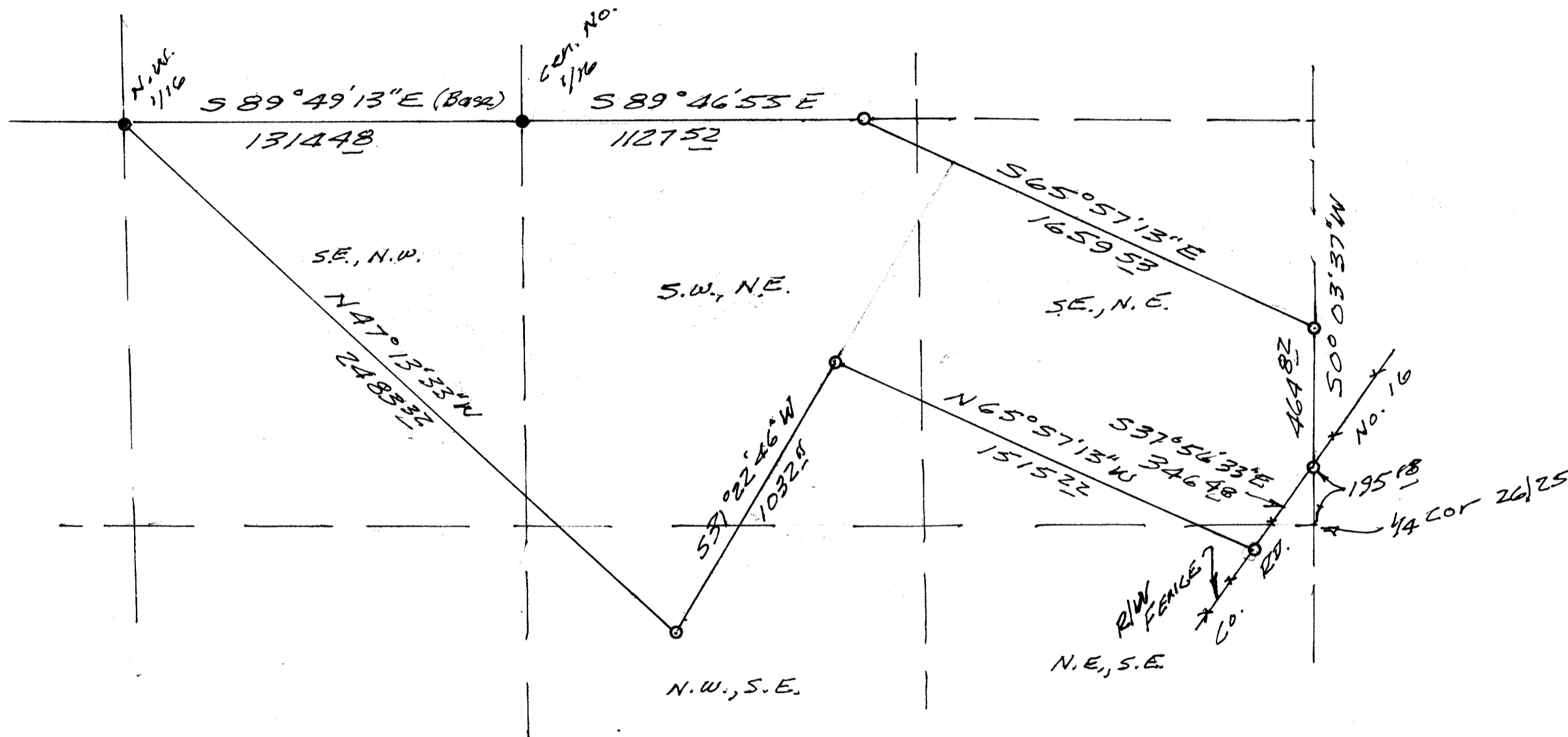
COUNTY SURVEYORS FILE DATA
DO NOT REMOVE FROM OFFICE

FILED ϕ
RECEIVED *jh*

APR 21 1980

COUNTY SURVEYOR
DOUGLAS COUNTY, ORE.
KS.

SURVEY FOR DEED DESCRIPTION
IN THE S.E. 1/4, N.W. 1/4, S.W. 1/4, N.E. 1/4, S.E. 1/4, N.E. 1/4, S.E. 1/4; & the N.W., S.E. 1/4
of Sec. 26, T. 27S., R. 5W.W.M.
FOR M. WEBER
by BRUCE ROGERS, 2737 Colkins, Roseburg
Mar., 1980
1" = 400'
Bearings Based on M 79-35



SURVEYED ALONG WITH M 79-35
SAME NARRATIVE APPLIES

- - FOUND 5/8" IRON ROD
- - SET 5/8" IRON ROD

REGISTERED
ORIGINATION
LAND SURVEYOR
Bruce L. Rogers
JULY 10, 1964
BRUCE R. ROGERS
660

MAP FILE M 83 - 14

MAP FILE M 83 - 14