

COUNTY SURVEYORS FILE DATA  
DO NOT REMOVE FROM OFFICE

FILED &  
RECEIVED &

APR 18 1980

# SURVEY TO SET PROPERTY CORNERS

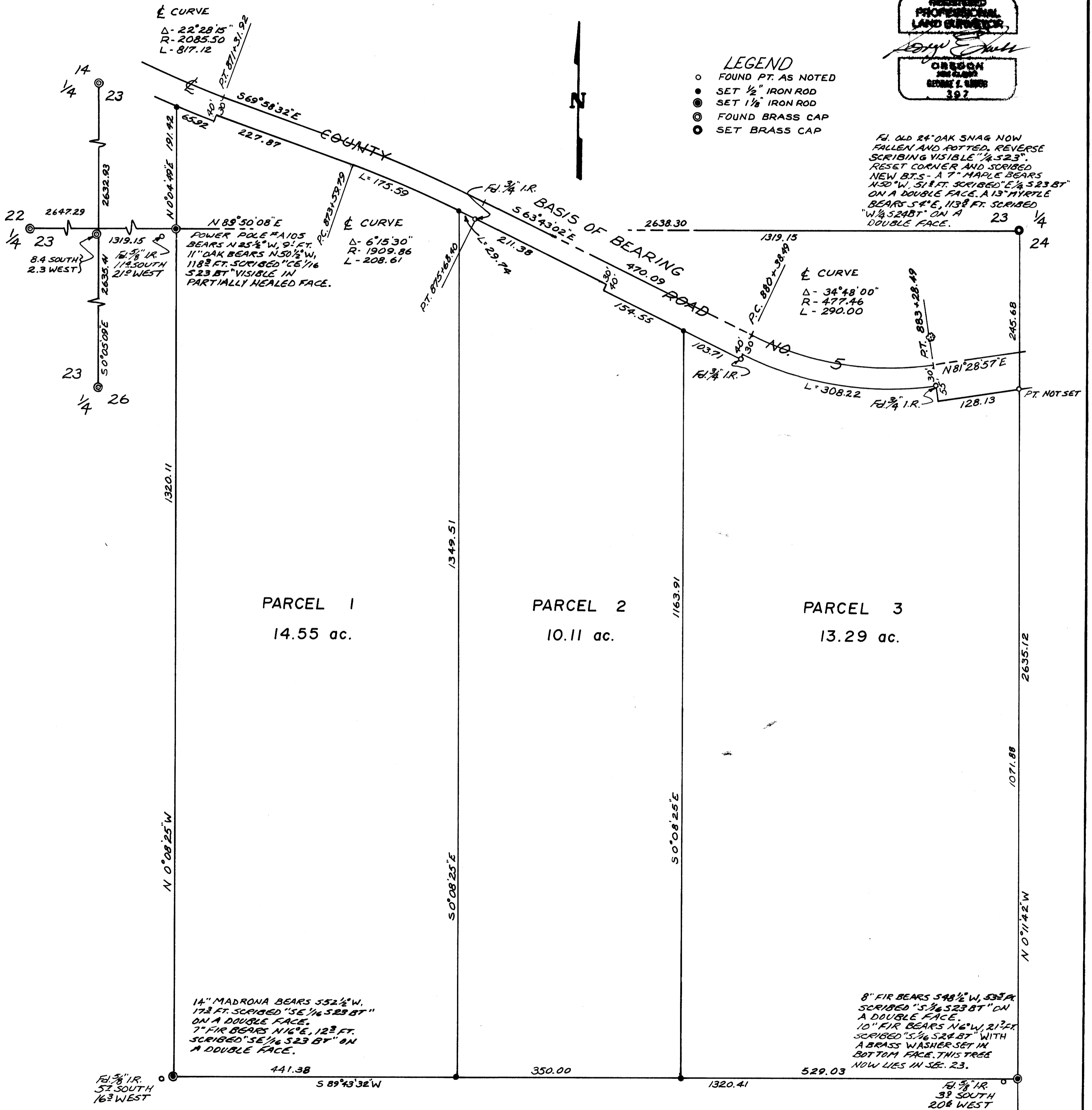
COUNTY SURVEYOR  
DOUGLAS COUNTY, ORE.  
KS

IN THE N.E. 1/4 OF THE S.E. 1/4  
SEC. 23, T28S, R8W, W.M.

BY: BAUGHMAN TECH. SERV. FOR: CARL HALE

MAR. 1980

SCALE: 1" = 100'



23 24  
26 25