

# SURVEY FOR U.S. FOREST SERVICE SECTION 20 T32S R3W W M

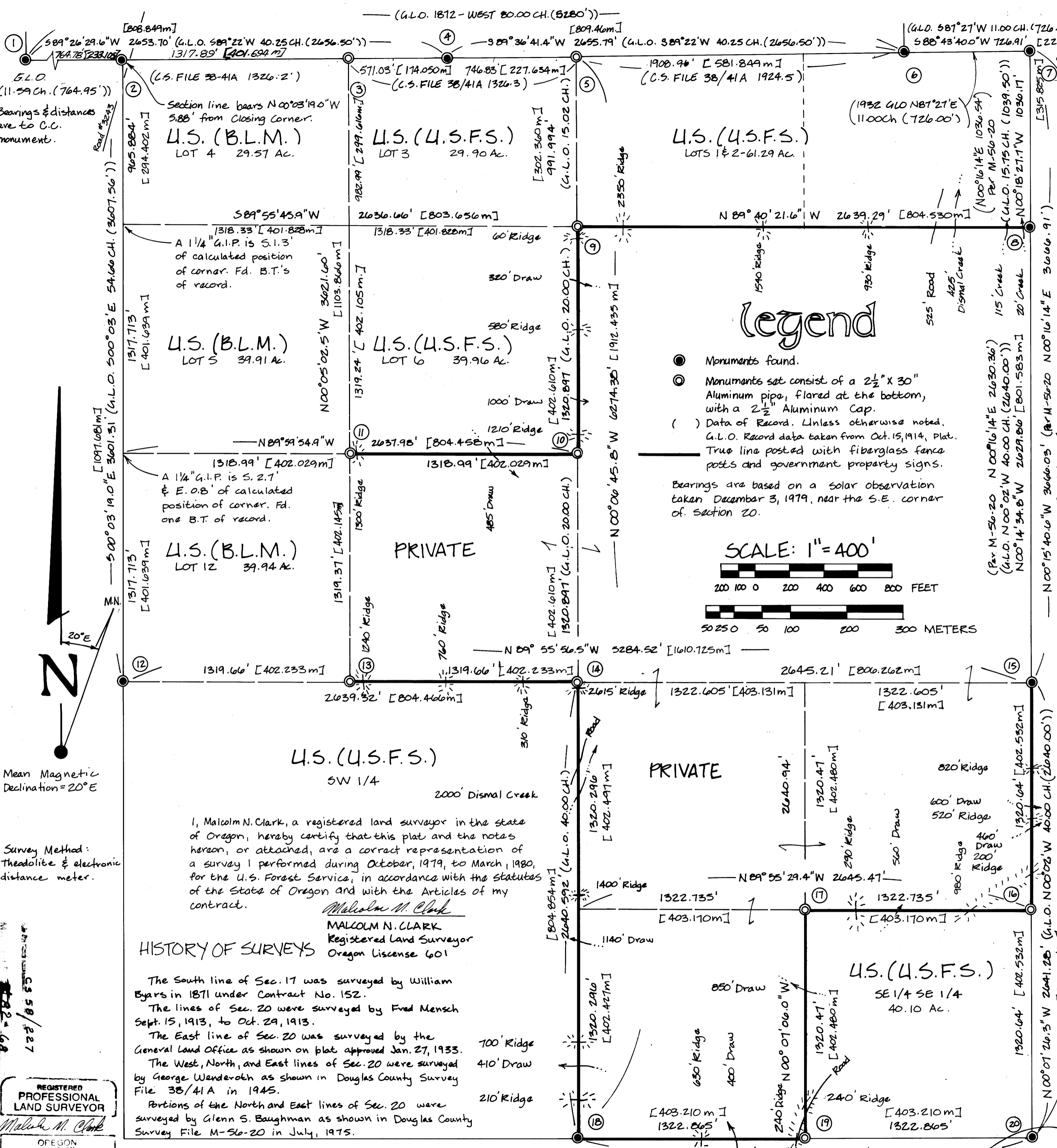
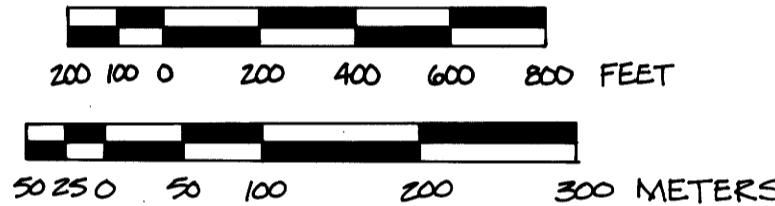
DOUGLAS COUNTY, OREGON -- MARCH 12, 1980  
 TILLER LAND SURVEY No. 39 - CONTRACT No. 53-0411-9-7652 N  
 CHICKERING / GREEN EMPIRE, INC. - GRANTS PASS, ORE.

## Legend

- Monuments found.
- Monuments set consist of a 2 1/2" x 30" Aluminum pipe, flared at the bottom, with a 2 1/2" Aluminum Cap.
- ( ) Data of Record. Unless otherwise noted, G.L.O. Record data taken from Oct. 15, 1914, Plat. True line posted with fiberglass fence posts and government property signs.

Bearings are based on a solar observation taken December 3, 1979, near the S.E. corner of Section 20.

SCALE: 1" = 400'



Mean Magnetic Declination = 20° E

Survey Method: Theodolite & electronic distance meter.

REGISTERED PROFESSIONAL LAND SURVEYOR  
 MALCOLM N. CLARK  
 OREGON  
 MALCOLM N. CLARK

I, Malcolm N. Clark, a registered land surveyor in the state of Oregon, hereby certify that this plat and the notes hereon, or attached, are a correct representation of a survey I performed during October, 1979, to March, 1980, for the U.S. Forest Service, in accordance with the statutes of the State of Oregon and with the Articles of my contract.

*Malcolm N. Clark*  
 MALCOLM N. CLARK  
 Registered Land Surveyor  
 Oregon License 601

### HISTORY OF SURVEYS

The South line of Sec. 17 was surveyed by William Byars in 1871 under Contract No. 152.  
 The lines of Sec. 20 were surveyed by Fred Mensch Sept. 15, 1913, to Oct. 29, 1913.  
 The East line of Sec. 20 was surveyed by the General Land Office as shown on plat approved Jan. 27, 1933.  
 The West, North, and East lines of Sec. 20 were surveyed by George Wenderoth as shown in Douglas County Survey File 38/41A in 1945.  
 Portions of the North and East lines of Sec. 20 were surveyed by Glenn S. Baughman as shown in Douglas County Survey File M-56-20 in July, 1975.

Examined and accepted for the U.S. Forest Service  
*Dennis J. Hayward* C.O.R.  
 April 1, 1980 Date

COUNTY SURVEYORS FILE UNIT  
 DO NOT REMOVE FROM OFFICE

- ① Fd. Brass Cap and B.T.'s: County Surveyors Office T32S R3W S1/4 S17 1969  
 8" Doug Fir - N 81° 40' W - 14.4'  
 10" Doug Fir - N 25° 15' E - 8.3'  
 10" Doug Fir - S 04° 10' W - 7.8'
- ② Fd. Brass Cap and B.T.'s: County Surveyors Office T32S R3W S1/4 S20 1969  
 7" Yew - S 19° 05' E - 24.0'  
 30" Grand Fir snag - S 05° 10' W - 12.0'  
 28" Doug Fir - N 15° 00' W - 32.6'  
 New B.T.: 18" Doug Fir - S 55° 50' W - 48.9'  
 Scribed: "T32S R3W S1/4 S20 BT"
- ③ Set Aluminum Cap by proportion. Fd. B.T.'s: County Surveyors Office T32S R3W S1/4 S20 1980  
 22" Doug Fir - S 47° 15' W - 31.4'  
 24" Doug Fir - S 20° 15' E - 38.0'  
 A 1/4" G.I.P. is S. 3.0' & W. 6.0' of corner.
- ④ Fd. Brass Cap and B.T.'s: County Surveyors Office T32S R3W S1/4 S17 1969  
 36" Doug Fir - S 80° E - 54.8'  
 30" Doug Fir - N 08° W - 33.4'
- ⑤ Set Aluminum Cap by proportion. Fd. B.T.'s: County Surveyors Office T32S R3W S1/4 S20 1980  
 18" Yew - S 72° 00' E - 37.8'  
 10" Doug Fir - S 37° 45' W - 35.3'  
 A 1/4" G.I.P. is S. 0.7' & E. 8.0' of corner.
- ⑥ Fd. Brass Cap and B.T.'s: County Surveyors Office T32S R3W S1/4 S16 1969  
 14" Doug Fir - N 68° W - 42.1'  
 8" White Fir - N 40° W - 4.6'  
 28" Doug Fir - S 71° E - 6.8'  
 8" White Fir - N 43° E - 12.5'
- ⑦ Fd. Brass Cap and B.T.'s: County Surveyors Office T32S R3W S1/4 S20 1969  
 10" Doug Fir - N 14° E - 7.0'  
 New B.T.'s: 12" Doug Fir - S 51° E - 17.1'  
 Scribed: "T32S R3W S1/4 S20 BT"  
 12" Doug Fir - S 13° W - 69.0'  
 Scribed: "T32S R3W S20 CL BT"
- ⑧ Fd. Brass Cap and B.T.'s: County Surveyors Office T32S R3W S1/4 S20 1969  
 6" Fir - N 01° E - 10.3'  
 8" Yew - N 16° 30' W - 41.7'
- ⑨ Set Aluminum Cap by Proportion. New B.T.'s: County Surveyors Office T32S R3W S1/4 S20 1980  
 24" Doug Fir - N 30° 50' E - 40.9'  
 20" Sugar Pine - S 72° 10' E - 33.0'  
 Both scribed "T32S R3W S1/4 S20 BT"
- ⑩ Set Aluminum Cap by Proportion. New B.T.'s: County Surveyors Office T32S R3W S1/4 S20 1980  
 6" Knobcone Pine - N 19° 10' W - 68.2'  
 18" Doug Fir - S 01° 20' E - 51.2'  
 Both scribed "T32S R3W S1/4 S20 BT"
- ⑪ Set Aluminum Cap by Proportion. New B.T.'s: County Surveyors Office T32S R3W S1/4 S20 1980  
 14" Doug Fir - S 70° 30' E - 18.0'  
 16" Doug Fir - S 15° 50' W - 50.0'  
 Both scribed "T32S R3W S1/4 S20 BT"
- ⑫ Fd. Brass Cap and B.T.'s: County Surveyors Office T32S R3W S1/4 S20 1969  
 14" Fir snag - S 28° 45' E - 22.8'  
 8" Doug Fir - N 81° 10' E - 22.5'  
 12" Doug Fir - S 82° 35' W - 25.8'
- ⑬ Set Aluminum Cap by Proportion. New B.T.'s: County Surveyors Office T32S R3W S1/4 S20 1980  
 14" Doug Fir - N 74° 05' E - 23.4'  
 13" Doug Fir - N 50° 00' W - 74.0'  
 Both scribed "T32S R3W S1/4 S20 BT"
- ⑭ Set Aluminum Cap by Proportion. New B.T.'s: County Surveyors Office T32S R3W S1/4 S20 1980  
 8" Hemlock - S 76° 10' W - 44.0'  
 14" Hemlock - N 35° 10' E - 49.4'  
 Both scribed "T32S R3W S1/4 S20 BT"
- ⑮ Fd. Brass Cap and B.T.'s: County Surveyors Office T32S R3W S1/4 S20 1969  
 8" Hemlock - N 32° W - 46.6'  
 8" Hemlock - S 12° 35' E - 40.7'  
 42" Stump - N 28° W - 54.0'
- ⑯ Set Aluminum Cap by Proportion. New B.T.'s: County Surveyors Office T32S R3W S1/4 S20 1980  
 20" Doug Fir - S 44° 55' W - 24.7'  
 Scribed "T32S R3W S1/4 S20 BT"  
 10" Hemlock - S 43° 40' E - 24.0'  
 Scribed "T32S R3W S1/4 S20 BT"
- ⑰ Set Aluminum Cap by Proportion. New B.T.'s: County Surveyors Office T32S R3W S1/4 S20 1980  
 32" Doug Fir - N 68° 25' E - 31.7'  
 16" Doug Fir - S 80° 20' E - 20.8'  
 Both scribed "T32S R3W S1/4 S20 BT"
- ⑱ Fd. Brass Cap and B.T.'s: County Surveyors Office T32S R3W S1/4 S20 1969  
 24" Doug Fir - S 56° 40' W - 19.1'  
 8" Yew - N 03° 15' W - 39.4'
- ⑳ Fd. Brass Cap and B.T.'s: County Surveyors Office T32S R3W S1/4 S20 1969  
 44" Doug Fir stump - N 92° 05' E - 105.4'  
 Bottom stump - S 54° 10' E - 33.4'  
 14" Stump - S 39° 05' W - 41.4'  
 12" Doug Fir - N 54° 15' W - 22.1'  
 New B.T.'s: 22" Doug Fir - N 78° 20' E - 154.2'  
 Scribed "T32S R3W S1/4 S20 BT"  
 12" Doug Fir - S 48° 20' E - 259.5'  
 Scribed "T32S R3W S1/4 S20 BT"  
 16" Doug Fir - S 16° 55' W - 95.7'  
 Scribed "T32S R3W S1/4 S20 BT"

NOTE: All new B.T.'s also marked with a 3/4" brass disc stamped "RLS 601" on the lower blaze. All old B.T.'s show blazes.

Survey Number M 82-68

Survey Narrative To Comply With O.R.S. 209.250

Location: Section 20, T.32S., R.3W., W.M.

Survey for: U.S. Forest Service, Umpqua National Forest  
Roseburg, Oregon. Tiller Land Survey No. 39  
Contract No. 53-04H1-9-765N

Survey by: CHICKERING/GREEN EMPIRE, INC.  
360 S.E. "H" Street Suite B  
Grants Pass, Oregon 97526  
(Malcolm N. Clark, R.L.S. 601)

Date: December 1979 to April 1980

Equipment: Wild T-16 theodolite and K. & E. Auto Ranger

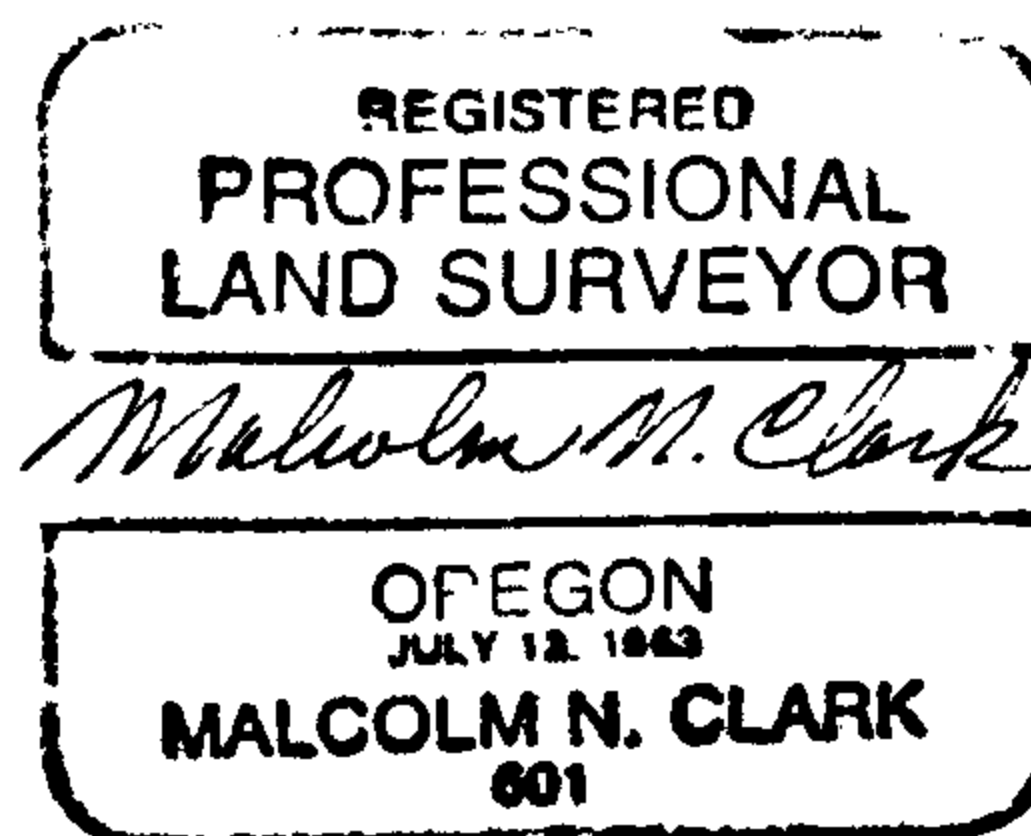
Purpose: To survey the boundaries of certain U.S. Forest Service lands in Section 20, to mark and post the boundary lines of certain U.S. Forest Service lands, to establish and monument certain corners of U.S. Forest lands, and to establish and monument the North one-quarter corner of Section 20.

Procedure: A solar observation was taken near the Southeast corner of Section 20 and was used as a bearing base for this survey. A closed traverse was run around the exterior boundary, measuring all angles by repetition, a minimum of two observations, and measuring all distances with an E.D.M., both in feet and meters. All existing controlling corners were tied by this traverse. All missing controlling corners were proportioned using Fred Mensch's plat dated October 15, 1914, as the basis of the proportions. The property line shown on the survey map were then run and closed onto the exterior boundary traverse. The property lines shown on the map are marked by 6 foot orange fiberglass fence posts and Forest Service boundary signs. All corner monuments set in this survey are 2 1/2 inch aluminum caps on a 2 inch (I.D.) by 30 inch flared aluminum pipe, set approximately 24 inches in the ground.

FILED  
RECEIVED JHM

APR 1 1980

COUNTY SURVEYOR  
DOUGLAS COUNTY, ORE.



OREGON SURVEYORS 58/227-1