

COUNTY SURVEYORS FILE DATA
DO NOT REMOVE FROM OFFICE

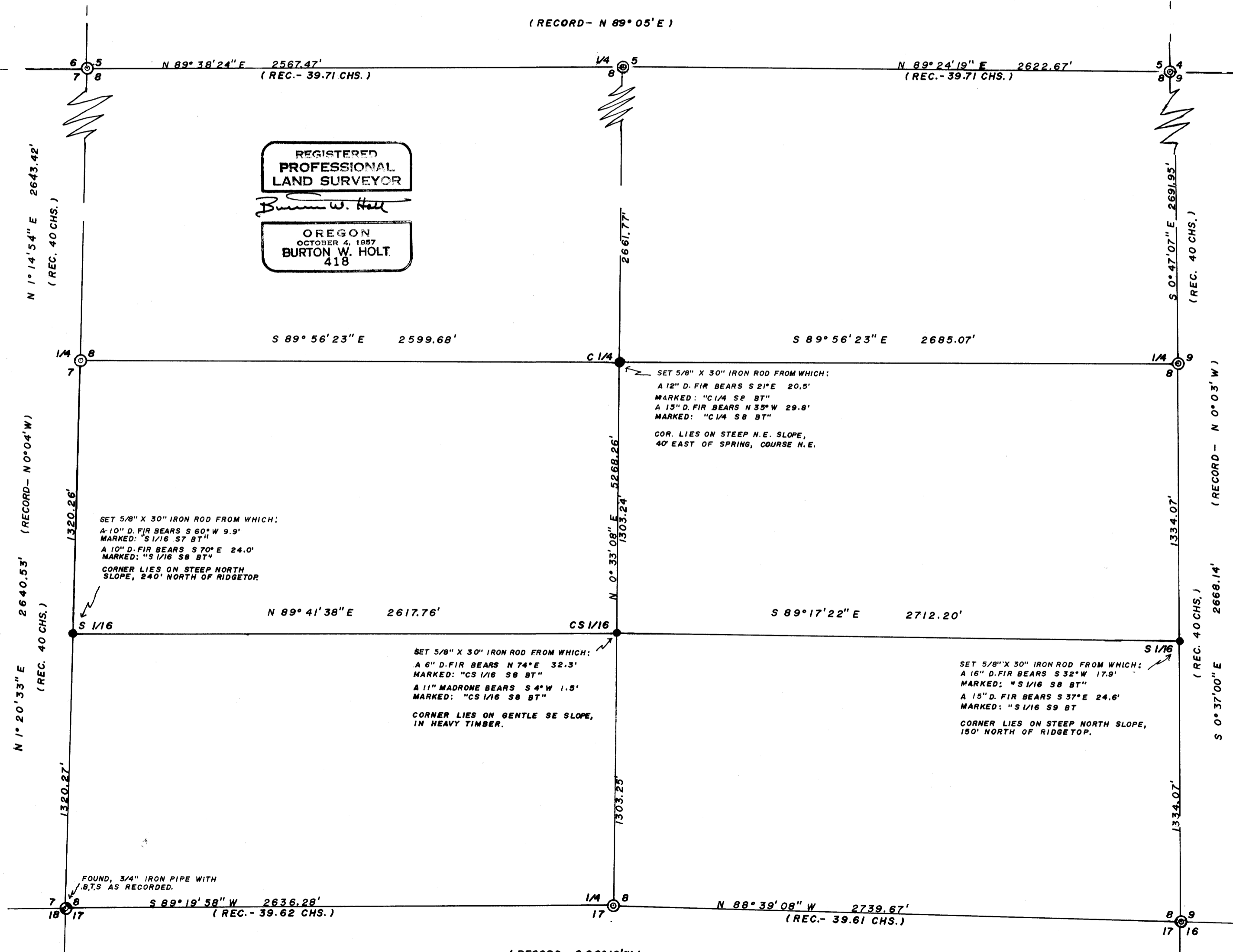
SURVEY TO SET C 1/4, CS 1/16, S 1/16 BET. 7-8, & S 1/16 BET. 8-9 CORNERS.
SITUATED IN SEC. 8, T 31 S R 3 W W.M.

FOR
SUN STUDS INC. AND ROSEBURG LUMBER CO.
BY: BURTON W. HOLT - P.O. BX. 1127 ROSEBURG, OREGON 97470
MARCH, 1980

FILED &
RECEIVED *JK*
MAR 12 1980
COUNTY SURVEYOR
DOUGLAS COUNTY, ORE.
⊕

⊙ — BRASS CAP FOUND WITH B.T.S AS RECORDED ● — SET 5/8" X 30" IRON ROD.

(RECORD- N 89° 05' E)



REGISTERED
PROFESSIONAL
LAND SURVEYOR
Burton W. Holt
OREGON
OCTOBER 4, 1957
BURTON W. HOLT
418

BASED ON SOLAR OBSERVATION

MAP FILE M 82 - 75

MAP FILE M 82 - 75

(RECORD- S 89° 12' W)