

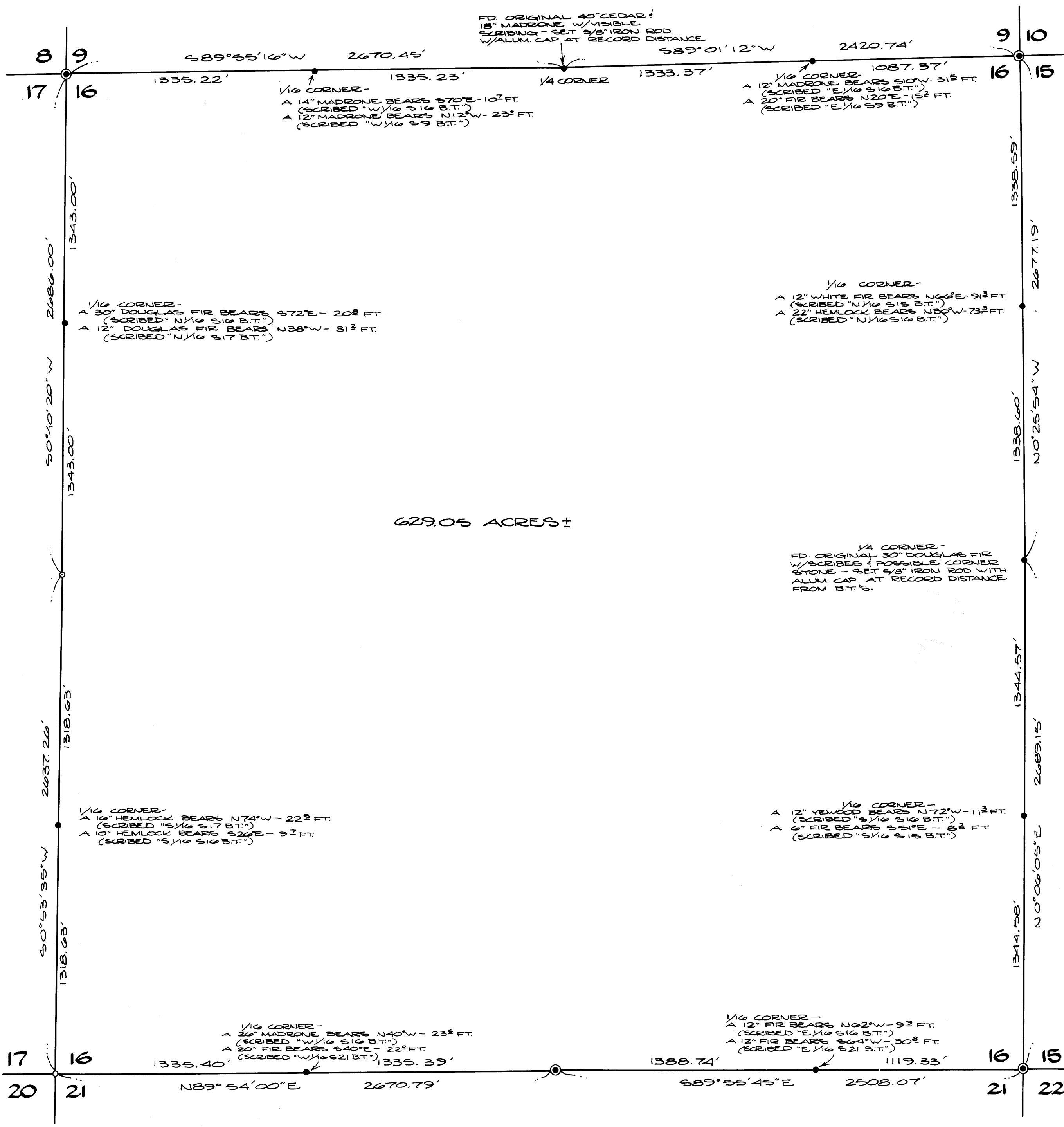
COUNTY SURVEYORS FILE DATA
DO NOT REMOVE FROM OFFICE

FILED &
RECEIVED JHW

JAN 28 1980

COUNTY SURVEYOR
DOUGLAS COUNTY, ORE
Φ

MAP FILE 1182-4



629.05 ACRES ±

Survey for Roseburg Lumber
Section 16, T 31S, R 3W, W.M.

By: BHW Engineering & Surveying
1205 S.E. Court
Roseburg, Oregon

REGISTERED
PROFESSIONAL
LAND SURVEYOR

Romans E. Ware

OREGON
NOV 18 1973
ROMANSO E WARE
1005

BEARINGS BASED PER G.L.O. PLAT

SCALE: 1" = 400'
JANUARY 1980

LEGEND:

- ⊙ — FD BRASS CAP & B.T.'S OF RECORD
- — FD. 1 1/4" IRON PIPE & B.T.'S OF RECORD
- — SET 5/8" IRON ROD W/ALUMINUM CAP
- ◊ — FD. 3/4" IRON ROD & B.T.'S OF RECORD



NARRATIVE:

MEASURING ACCOMPLISHED BY A COMBINATION OF CHAINING/THEODOLITE AND EDM/THEODOLITE. LINES SHOWN ARE DESIGNATED IN THE FIELD BY RED RIBBON, TREES BLAZED AND PAINTED (YELLOW), AND BOUNDARY TAGS.

MAP FILE 1182-4