

MAP FILE 82-30

PROPERTY LINE SURVEY
IN THE N 1/2, N.W. 1/4, SEC. 19, T24S, R6W, W.M.
DOUGLAS COUNTY OR.
FEBRUARY 1980
SCALE 1"=200'

COUNTY SURVEYORS FILE DATA
DO NOT REMOVE FROM OFFICE

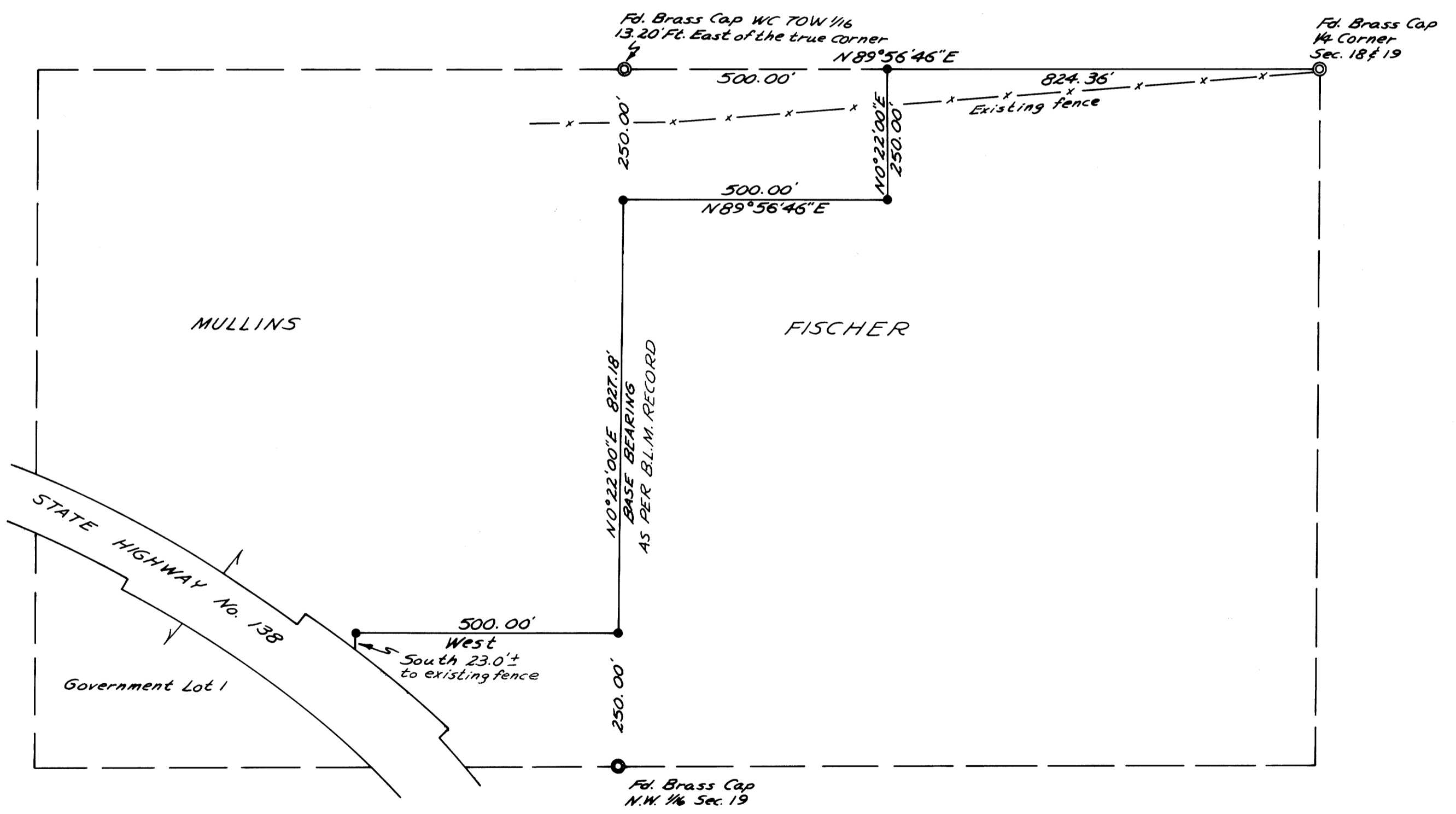
FILED
COUNTY SURVEYOR
DOUGLAS COUNTY, OR.
K.S.

FOR: HARRY MULLINS
BY: ROBERT L. DOLAN
RT. 1 BOX 1820
SUTHERLIN OR.

LEGEND

- ⊙ Section Corner Found
- 5/8" Iron Rod Set

NARRATIVE
Line established from
found section corners



REGISTERED
PROFESSIONAL
LAND SURVEYOR

Robert L. Dolan

OREGON
JULY 30, 1976
ROBERT L. DOLAN
1976

MAP FILE 82-30

MAP FILE 82-30

MAP FILE 82-30