

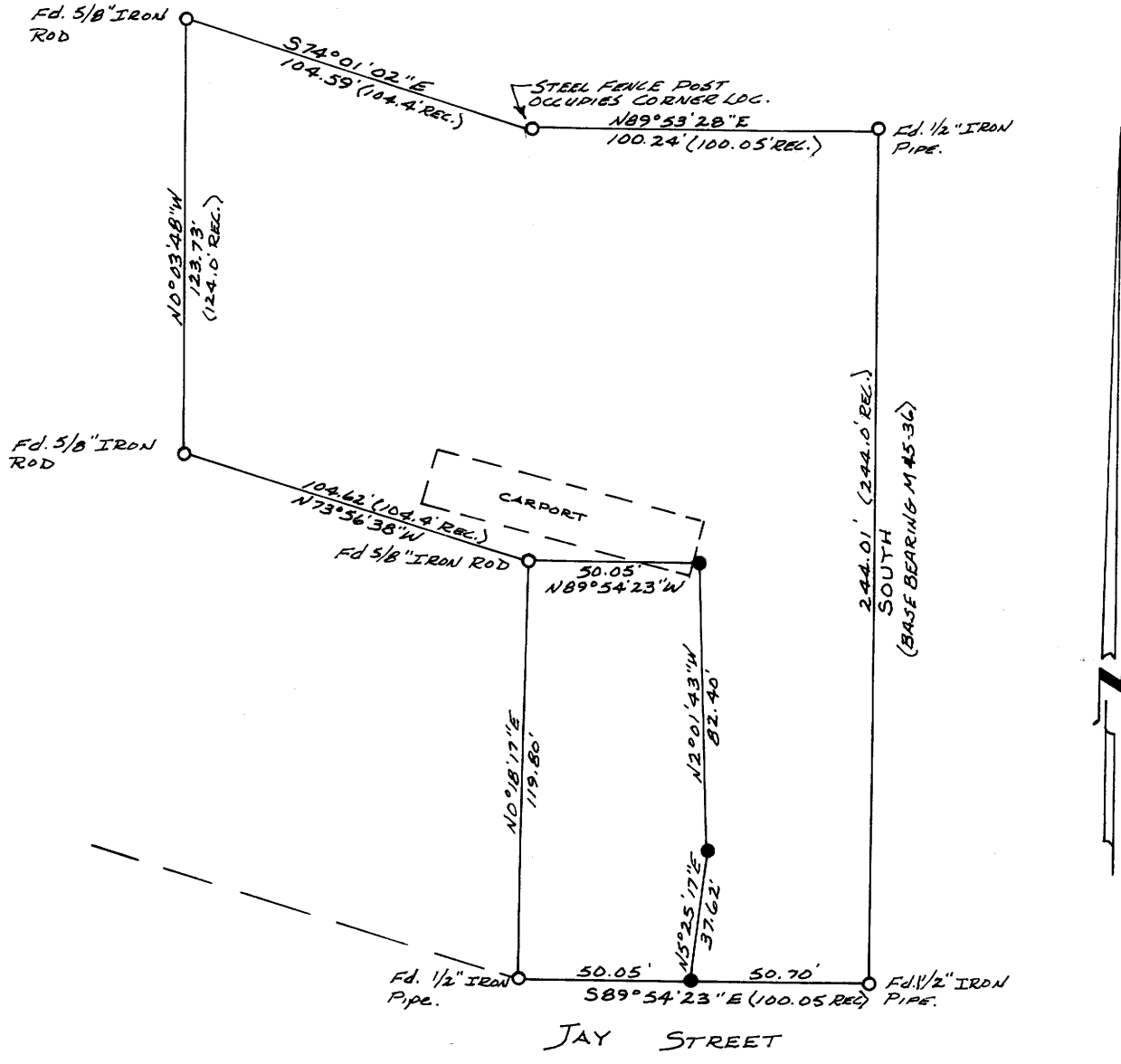
COUNTY SURVEYORS FILE DAY
DO NOT REMOVE FROM OFFICE

FILED ϕ
RECEIVED JHH

FEB 19 1980

COUNTY SURVEYOR
DOUGLAS COUNTY, ORE.
 ϕ

MAP FILE M-82-23



SURVEY IN LOTS 8 & 9, BLOCK 2, SHINNS ADD.,
NW 1/4 Section 23, Twp. 27 S., Rng. 6 W., W.M.
Surveyed for Neil Hummel by Landline Dev. Co.
February, 1980 Scale 1" = 50'

- Set 5/8" Iron Rod

The purpose of this survey was to re-establish monuments previously set in M45-36 and M45-49. All angles were turned by a 20' kern theodolite and all distances were measured with a 300' steel chain.

Surveyed by: Bruce Rogers
2734 Calkins Road
Roseburg, Or: 97470

REGISTERED
OREGON
LAND SURVEYOR

Bruce R. Rogers

JULY 10, 1964
BRUCE R. ROGERS
660

MAP FILE M-82-23