

COUNTY SURVEYORS FILE DATA
DO NOT REMOVE FROM OFFICE

PROPERTY LINE LOCATION
FOR
CLYDE PIKE

FILED DP
RECEIVED p

FEB 12 1980

COUNTY SURVEYOR
DOUGLAS COUNTY, OREG.
DP 2 KS

LOCATED IN THE NE 1/4 SE 1/4 OF SEC. 36, T. 22S., R. 13W., W.M.

DATE: JANUARY 19, 1980

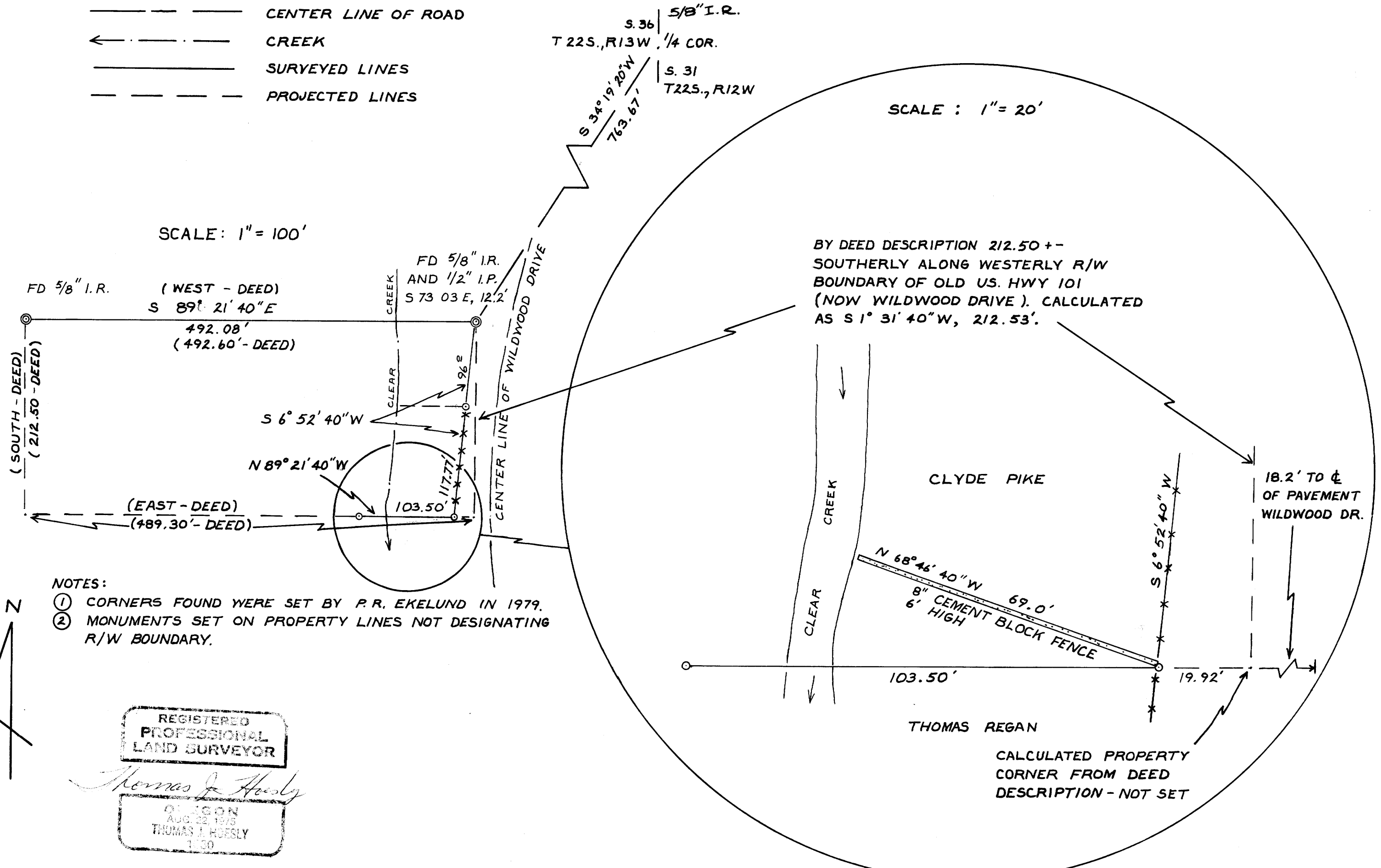
DRAWN BY: D. L. KLAUSMAN

SURVEYED BY: THOMAS HOESLY 1808 JOHNSON RD.

NORTH BEND, OREGON

LEGEND

- PROPERTY LINE LOCATION MARKER SET 5/8" x 30" I.R.
- ⊙ FOUND PROPERTY CORNER
- CENTER LINE OF ROAD
- ← CREEK
- SURVEYED LINES
- - - PROJECTED LINES



NOTES:

- ① CORNERS FOUND WERE SET BY P. R. EKELUND IN 1979.
- ② MONUMENTS SET ON PROPERTY LINES NOT DESIGNATING R/W BOUNDARY.

REGISTERED
PROFESSIONAL
LAND SURVEYOR

Thomas J. Hoesly

OLSON
AUG 22 1975
THOMAS J. HOESLY
130

MAP FILE M82-20

MAP FILE M82-20