

COUNTY SURVEYORS FILE DATA
DO NOT REMOVE FROM OFFICE

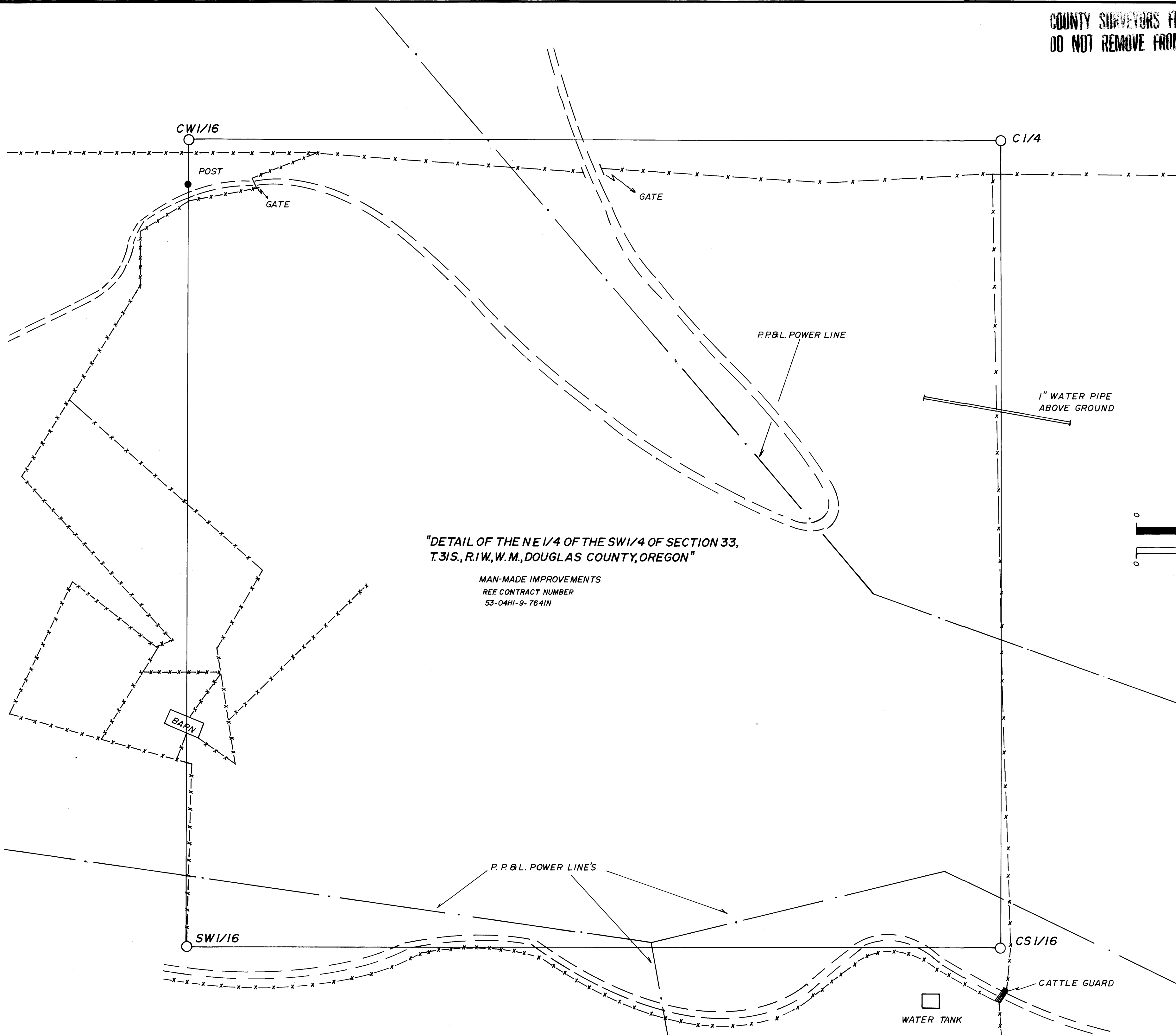
FILED DP
RECEIVED

FEB 8 1980

COUNTY SURVEYOR
DOUGLAS COUNTY, ORE.

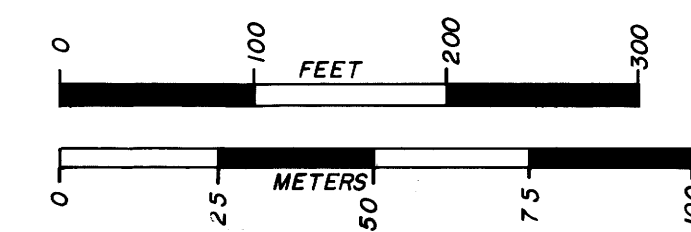
DP

MAP FILE 1182-758



"DETAIL OF THE NE 1/4 OF THE SW 1/4 OF SECTION 33,
T.31S., R.1W., W.M., DOUGLAS COUNTY, OREGON"

MAN-MADE IMPROVEMENTS
REF CONTRACT NUMBER
53-04HI-9-764IN



REGISTERED
PROFESSIONAL
LAND SURVEYOR
Kurt C. Weaver
 JULY 14, 1978
 KURT C. WEAVER
 1679

MAP FILE 1182-758