

SURVEY TO SET LOT CORNERS

LOT 11, BLOCK 2, BROWN'S FAIR ACRES

Section 24, T.27 S., R. 6 W.W.M.

For William Moffitt

By: Baughman Tech. Service

FILED
RECEIVED

FEB 8 1980

COUNTY SURVEYOR
DOUGLAS COUNTY, ORE.

LEGEND

- o Fd. 1/2" I.R.
- Set 1/2" I.R.
- ∠ Fd. 3/4" I.P.
- ⊙ Fd. Boat Spike

REGISTERED
PROFESSIONAL
LAND SURVEYOR

Glenn S. Baughman
OREGON
JULY 14, 1961
GLENN S. BAUGHMAN
536

MAP PREPARED BY: BAUGHMAN TECHNICAL SERVICES, INC.
P.O. BOX 222
ROSEBURG, OREGON 97470
673-0966

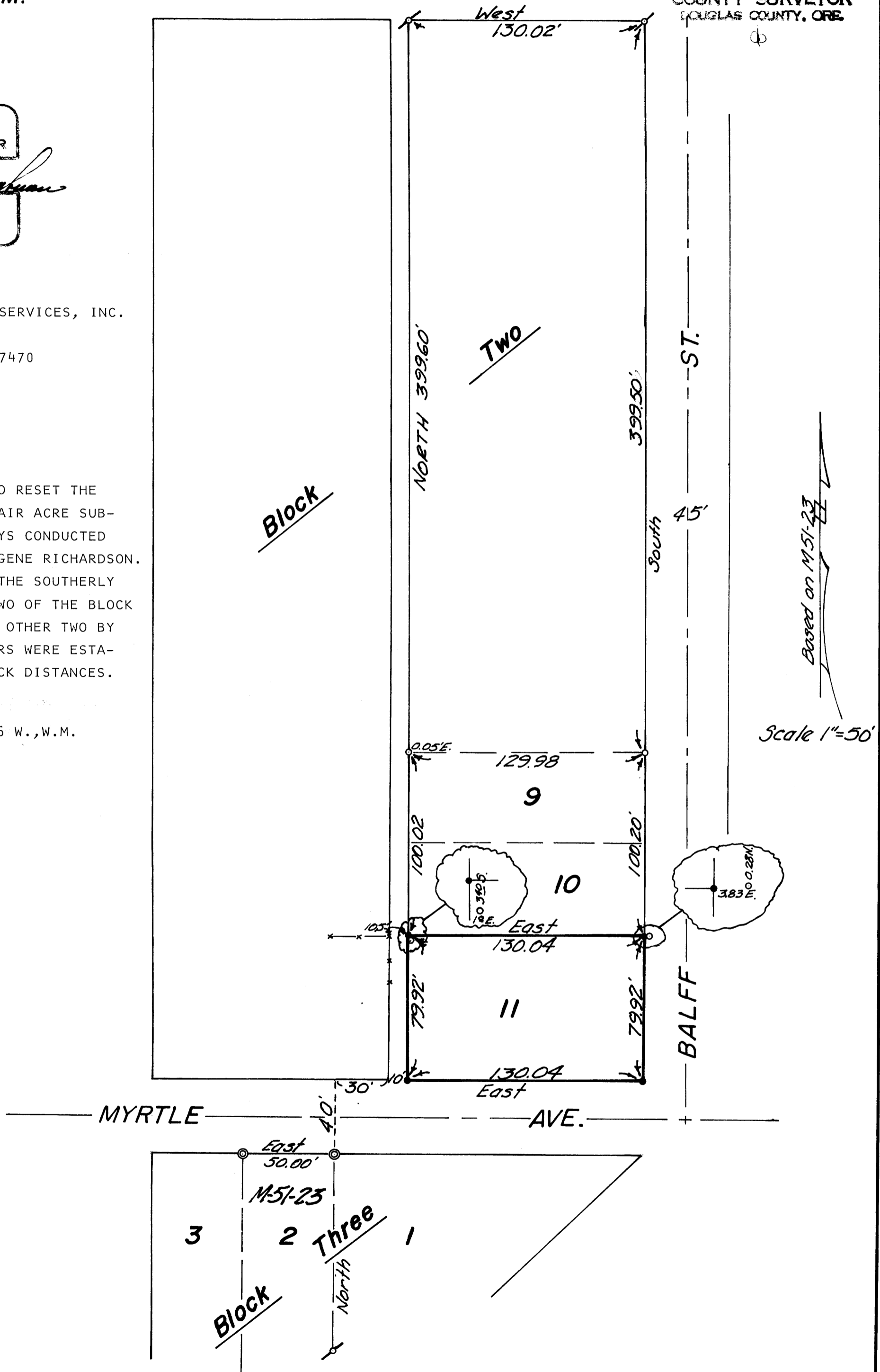
FEBRUARY 1980

NARRATIVE

THE PURPOSE OF THIS SURVEY WAS TO RESET THE CORNERS OF LOT 11, BLOCK 2, BROWN'S FAIR ACRE SUB-DIVISION. WE FOUND EVIDENCE OF SURVEYS CONDUCTED BY DON GARRETT, JAMES DAUGHERTY, AND GENE RICHARDSON. WE BASED OUR SURVEY ON TWO POINTS ON THE SOUTHERLY R/W LINE OF MYRTLE AVENUE M 51-23. TWO OF THE BLOCK CORNERS WERE IN AND WE DETERMINED THE OTHER TWO BY INTERSECTION OF LINES. THE LOT CORNERS WERE ESTABLISHED BY PRO-RATING THE OVERALL BLOCK DISTANCES.

N.W. 1/4 OF SECTION 24, T. 27 S., R. 6 W., W.M.

COUNTY SURVEYORS FILE DATA
DO NOT REMOVE FROM OFFICE



FM 4-835