

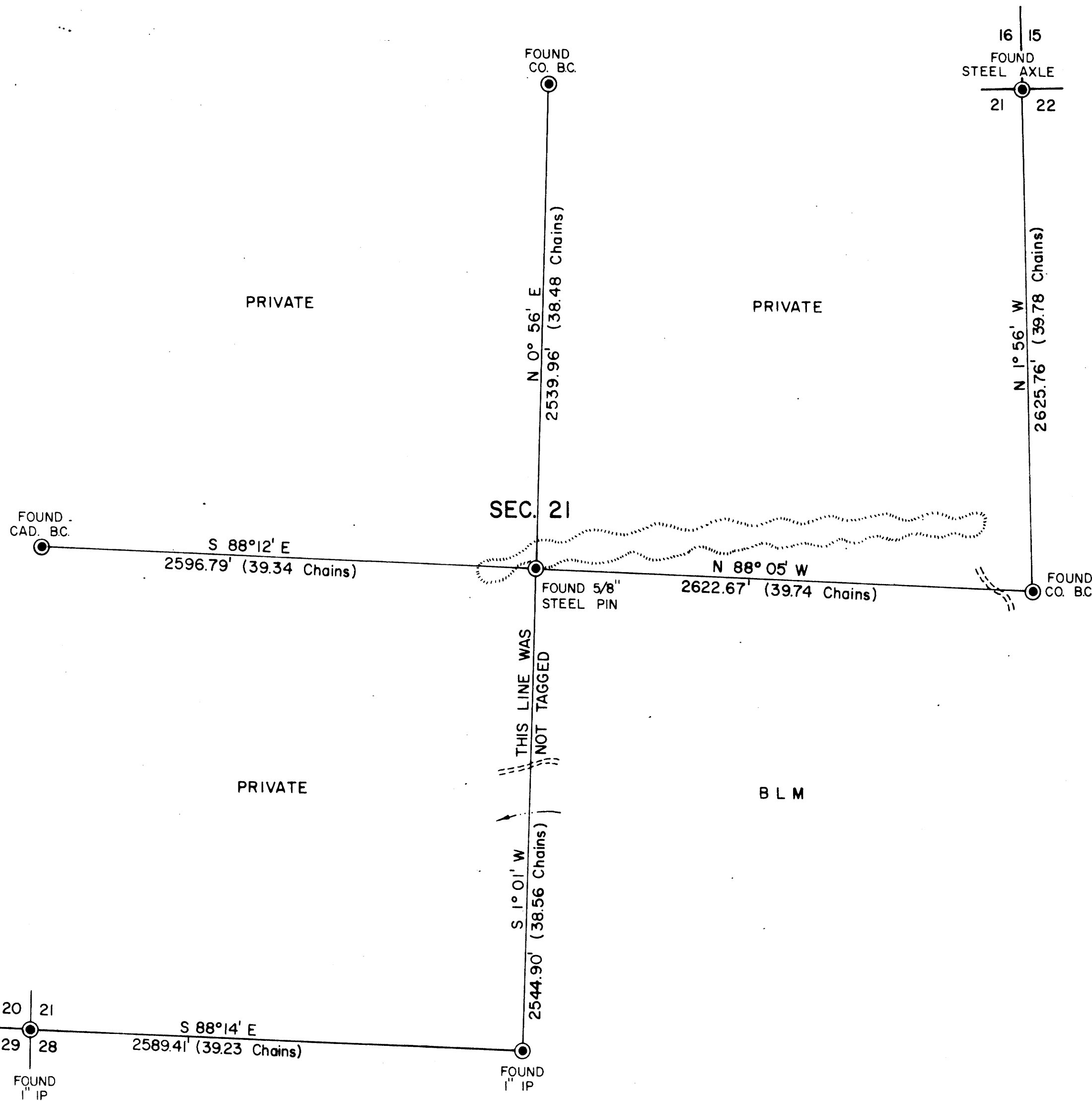
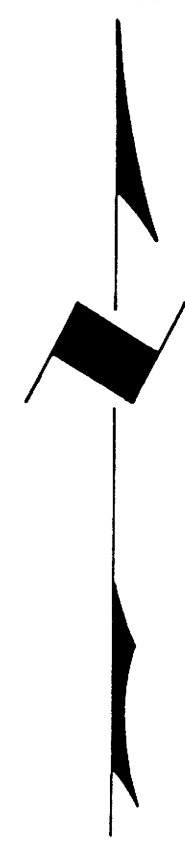
# TOWNSHIP 29 SOUTH, RANGE 6 WEST, OF THE WILLAMETTE MERIDIAN, OREGON

## ADMINISTRATIVE SURVEY

FILED *dh*  
RECEIVED *dh*

NOV 26 1979

COUNTY SURVEYOR  
DOUGLAS COUNTY, ORE.



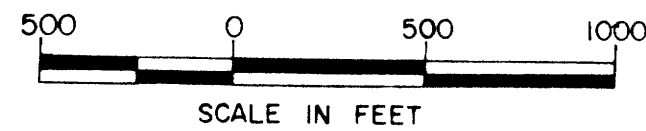
THIS PLAT REPRESENTS AN ADMINISTRATIVE SURVEY OF  
T 29 S, R 6 W, SEC. 21, WILLAMETTE MERIDIAN. BEARINGS  
ARE DETERMINED BY DIRECT OBSERVATION OF THE SUN AND  
ALL BLM PROPERTY LINES ARE BLAZED AND TAGGED.

This reproduction made on  
an Oce 7100. 10/15/93

**COUNTY SURVEYORS FILE DATA  
DO NOT REMOVE FROM OFFICE**

### LEGEND

- CORNERS FOUND
- RIDGE
- INTERMITTENT STREAM
- ROADS



U.S. BUREAU OF LAND MANAGEMENT

ROSEBURG DISTRICT OREGON

DRAWN BY KURT DONNELLY DATE 8-2-78

SURVEYED BY FLOYD MEYER DATE NOVEMBER 1977

APPROVED BY *Bruce P. Chamberlain* DATE 8-28-78  
DISTRICT ENGINEER

MAP FILE M81-9

MAP FILE M81-9