

# TOWNSHIP 29 SOUTH, RANGE 4 WEST, OF THE WILLAMETTE MERIDIAN, OREGON

## ADMINISTRATIVE SURVEY

FILED *dh*  
RECEIVED *dh*

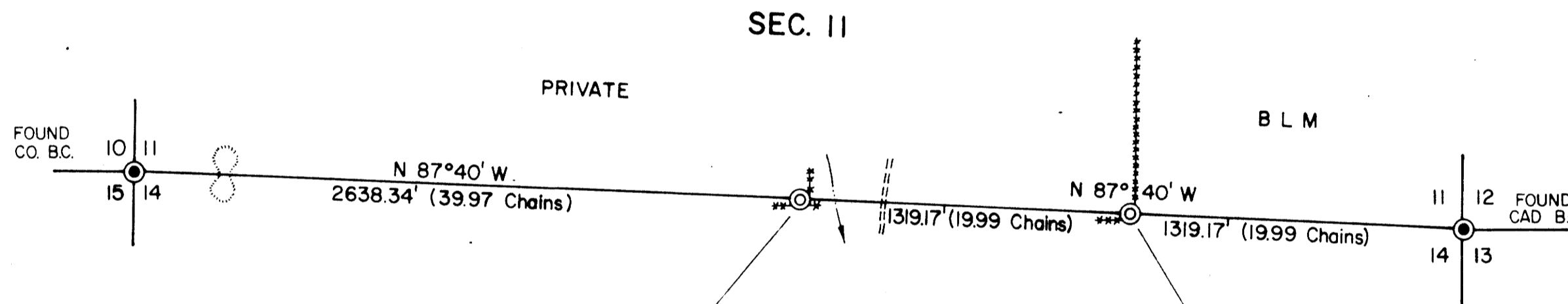
NOV 26 1979

COUNTY SURVEYOR  
WAGLAS COUNTY, ORE.

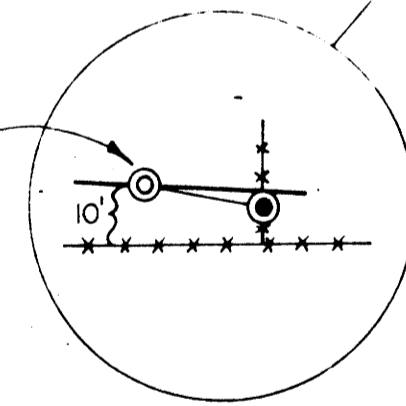
THIS PLAT REPRESENTS AN ADMINISTRATIVE SURVEY OF  
T 29 S, R 4 W, SEC. 11, WILLAMETTE MERIDIAN. BEARINGS  
ARE DETERMINED BY DIRECT OBSERVATION OF THE SUN  
AND ALL BLM PROPERTY LINES ARE TAGGED.

This reproduction made on  
an Oce 7100. 10/15/93

**COUNTY SURVEYORS FILE DATA  
DO NOT REMOVE FROM OFFICE**

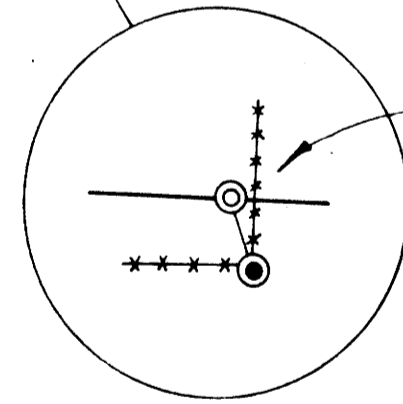


SET 1 in. IP, 24 in. LG., 24 in. IN GROUND FROM WHICH  
A FIR, 40 in. DIA., BEARS N 18 1/4° E, 174.2 ft. TO CENTER.  
AN INCENSE CEDAR, 32 in. DIA., BEARS S 81 1/4° E, 113.5 ft. TO CENTER.



FOUND 3/4" REBAR WHICH BEARS S 85°55' E, 14.7 ft. FROM ADMIN. 1/4 CORNER.

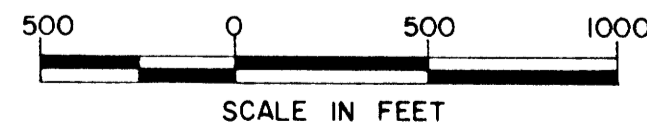
SET 6 in. RAILROAD SPIKE, 5 in. IN A 2 ft. DIA. ROOT FROM WHICH  
A FIR, 10 in. DIA., BEARS N 62 3/4° E, 6.1 ft. TO FACE.  
AN IP, 3 in. DIA., PROJECTING 6 in. ABOVE GROUND, BEARS S 18 1/4° E, 4.5 ft.



FOUND IP, 3 in. DIA., PROJECTING 6 in. ABOVE GROUND, BEARS S 18°16' E, 4.5 ft. FROM ADMIN. E 1/16 CORNER.

### LEGEND

- CORNERS FOUND
- ⊙ CORNERS SET
- INTERMITTENT STREAM
- - - ROADS
- ~ ~ ~ RIDGE
- \*\*\*\*\* FENCE



U.S. BUREAU OF LAND MANAGEMENT

ROSEBURG DISTRICT OREGON

DRAWN BY KURT DONNELLY DATE 8-17-78

SURVEYED BY LEONARD HERZSTEIN DATE AUGUST 1978

APPROVED BY *James J. Chamberlain* DATE 8-28-78  
DISTRICT ENGINEER