

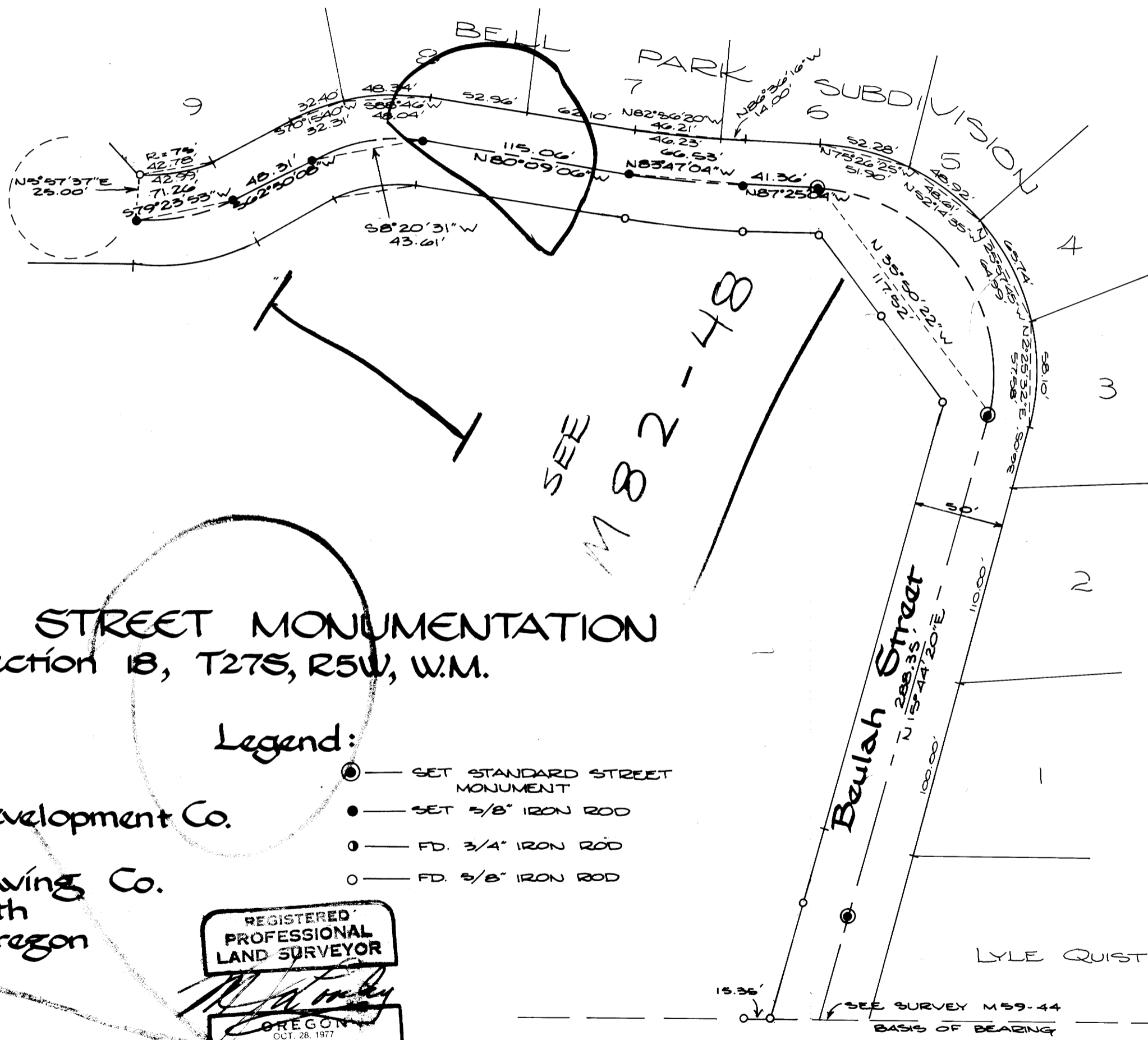
COUNTY SURVEYORS FILE DATA  
DO NOT REMOVE FROM OFFICE

FILED DP  
RECEIVED

JAN 24 1980

DOUGLAS COUNTY SURVEYOR  
DOUGLAS COUNTY, ORE

DP



# SURVEY FOR STREET MONUMENTATION in Section 18, T27S, R5W, W.M.

Scale: 1"=60'  
January 1980

For: Spyglass Development Co.

By: Roseburg Paving Co.  
Hwy. 99 South  
Roseburg, Oregon

### Legend:

- — SET STANDARD STREET MONUMENT
- — SET 5/8" IRON ROD
- — FD. 3/4" IRON ROD
- — FD. 5/8" IRON ROD

REGISTERED  
PROFESSIONAL  
LAND SURVEYOR

OREGON  
OCT. 28, 1977  
M.J. LOOSLEY  
1507

BASE BEARING PER PLAT OF BELL PARK SUBDIVISION  
AS RECORDED IN VOL. 15 PG. 69, DOUGLAS COUNTY  
SURVEYOR'S OFFICE.

MAP FILE 81-79

MAP FILE 81-79