

SURVEY TO ESTABLISH NORTH BOUNDARY LINE FOR MARK STERNER.

COUNTY SURVEYORS FILE DATA
DO NOT REMOVE FROM OFFICE

JANUARY, 1980

BY HAROLD L. BALL - REGISTERED SURVEYOR

LOCATED IN NE 1/4, SEC 31, T 26S, R 6W, W.M.

MAP FILE M81-77

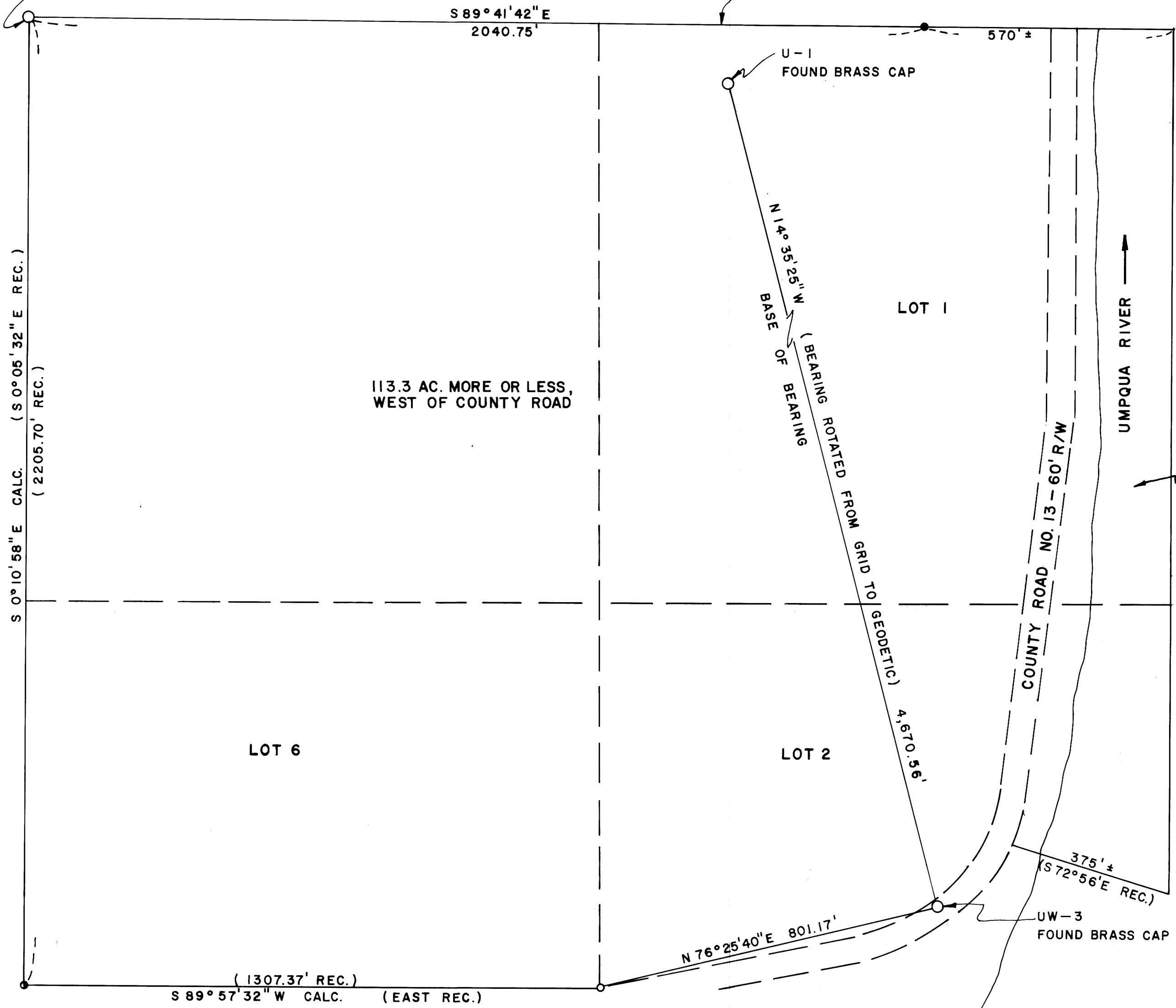
FILED ϕ
RECEIVED *JK*
JAN 23 1980
COUNTY SURVEYOR
DOUGLAS COUNTY, ORE.
 ϕ

1/4 CORNER BETWEEN
SECTIONS 30 & 31,
T 26S, R 6W, W.M.

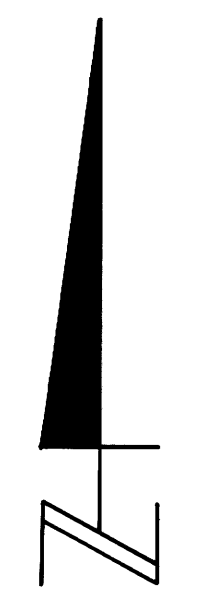
RUSTY NELSON

BOUNDARY LINE AGREEMENT
THIS LINE

(SEE RM 1-78)



REGISTERED
PROFESSIONAL
LAND SURVEYOR
Harold L. Ball
OREGON
SEPT. 23, 1977
HAROLD L. BALL
1123



1" = 200'

LEGEND

- \circ FD. 5/8" IRON ROD
- \bullet PIN OF RECORD
- \bullet SET 5/8" IRON ROD

MAP FILE M81-77