

Bk 6-Pg 21A

M 81-71 A

REGISTERED  
PROFESSIONAL  
LAND SURVEYOR

B.A. Shaner

OREGON  
OCT. 4, 1957  
BRUCE A. SHANER  
430



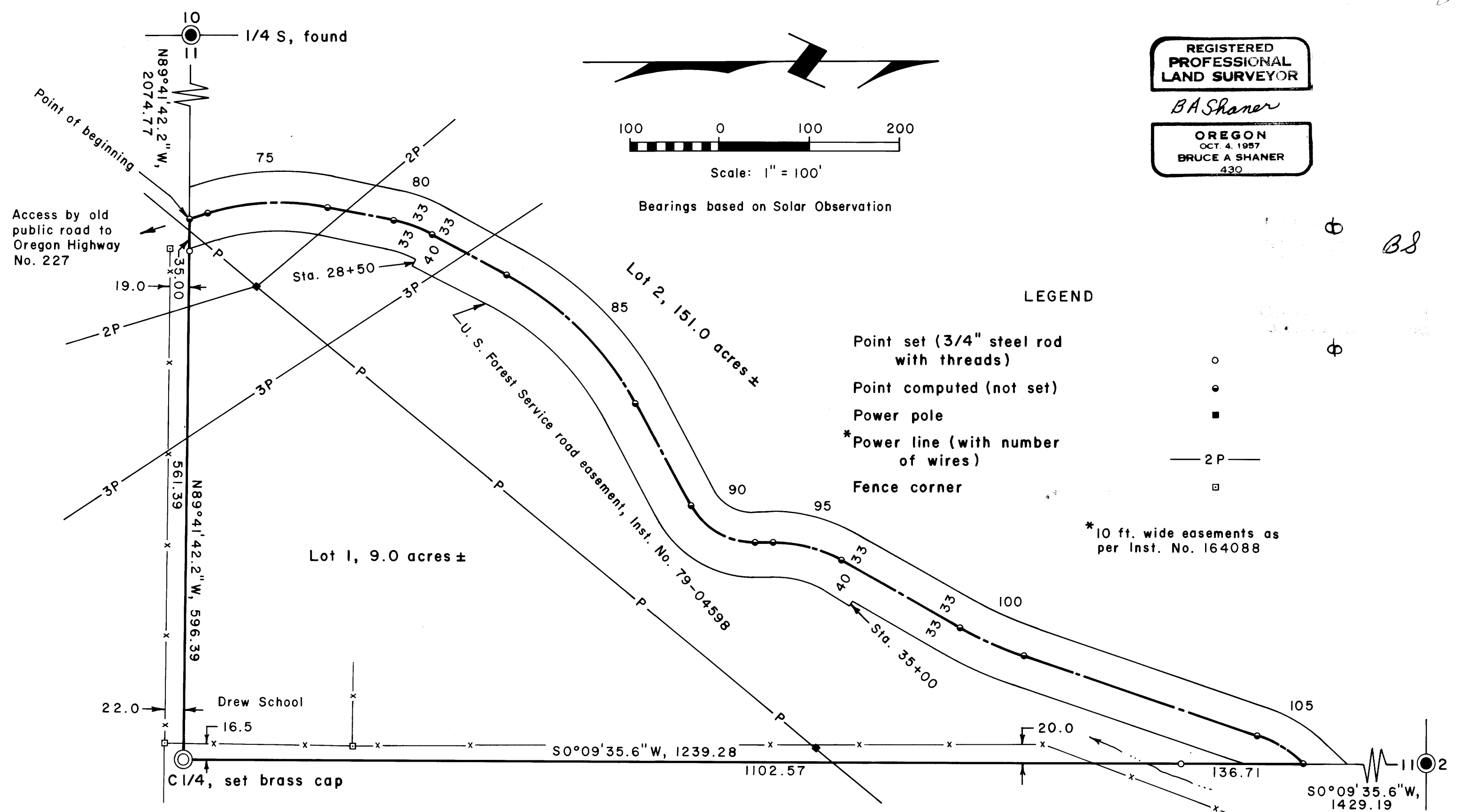
Scale: 1" = 100'

Bearings based on Solar Observation

LEGEND

- Point set (3/4" steel rod with threads) ○
- Point computed (not set) ●
- Power pole ■
- \* Power line (with number of wires) — 2P —
- Fence corner □

\* 10 ft. wide easements as per Inst. No. 164088



Lot 1 West Boundary & U. S. Forest Service Road Easement Centerline Data

Curve No.	Sta.	Radius	Tangent	Length	Bearing & Distances Between Curves	Long Chord Bearing & Distance
Begin	25+76.58					
75	PC 26+00.19 PT 27+35.78	275	69.20	135.59	N17°04'35"W, 23.61	N2°57'04"W, 134.22
80	PC 28+09.12 PT 28+53.96	150	22.58	44.84	N11°10'26"E, 73.34	N19°44'14"E, 44.67
85	PC 29+47.84 PT 31+51.86	350	104.99	204.02	N28°18'03"E, 93.88	N45°00'00"E, 201.14
90	PC 32+79.12 PT 33+65.99	80	48.27	86.87	N61°41'57"E, 127.26	N30°35'21"E, 82.66
95	PC 33+87.24 PT 34+66.32	150	40.47	79.08	N0°31'15"W, 21.25	N14°34'52"E, 78.16
100	PC 36+16.47 PT 36+95.37	400	39.57	78.90	N29°40'59"E, 150.15	N24°01'57"E, 78.76
105	PC 39+66.72 PT 40+28.69 (End)	135.56	31.54	61.97	N18°22'55"E, 271.35	N31°40'25"E, 61.43

Minor Land Partition in  
the NW 1/4 Section II,  
T31S, R2W, W. M.,  
Douglas County, Oregon

Page 1 of 2, Gladys M. Freeman MLP

December 28, 1979

Note: For subdivision of Section II, refer to  
County Surveyor Map File RM 3-27.

COPIES SURVEYORS FILE DATA  
DO NOT REMOVE FROM OFFICE

M 81-71 A