

TOWNSHIP 32 SOUTH, RANGE 7 WEST, OF THE WILLAMETTE MERIDIAN, OREGON

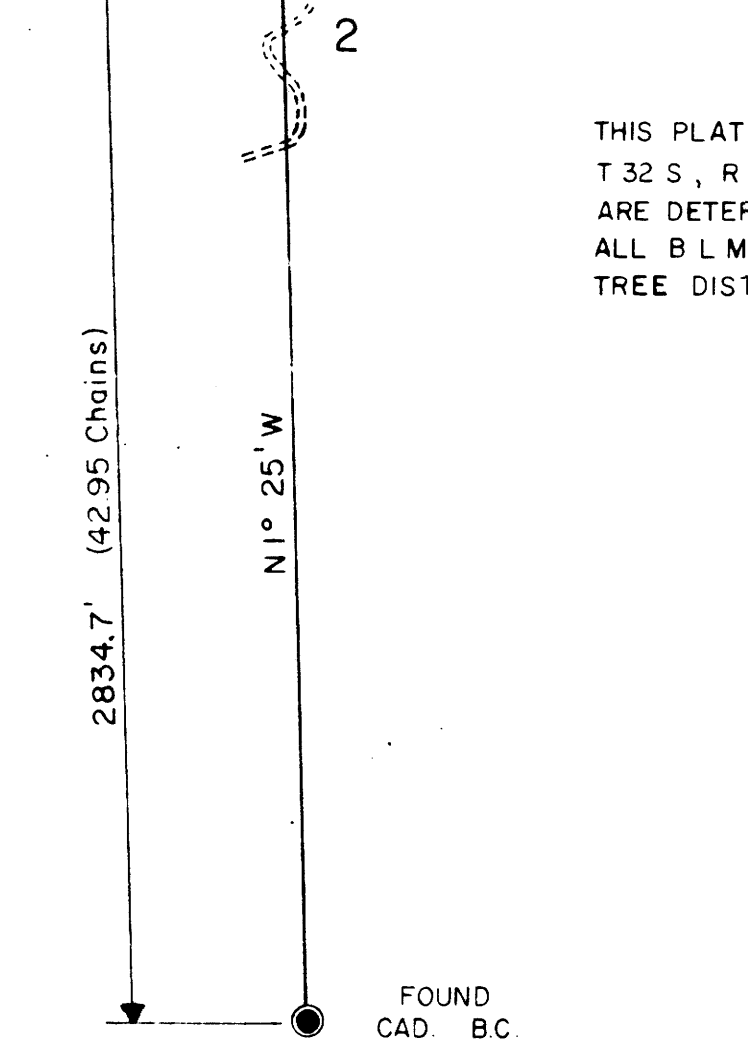
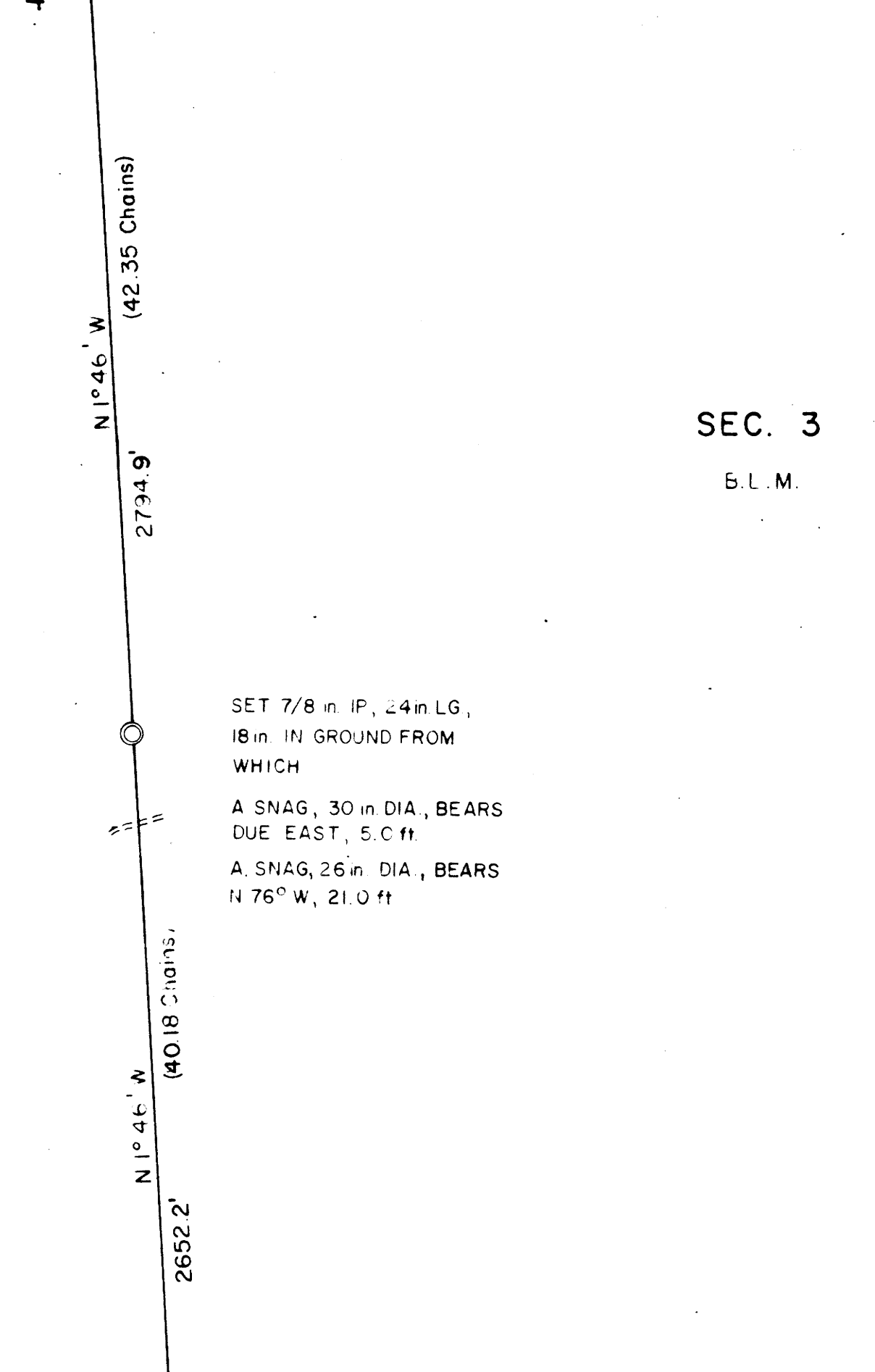
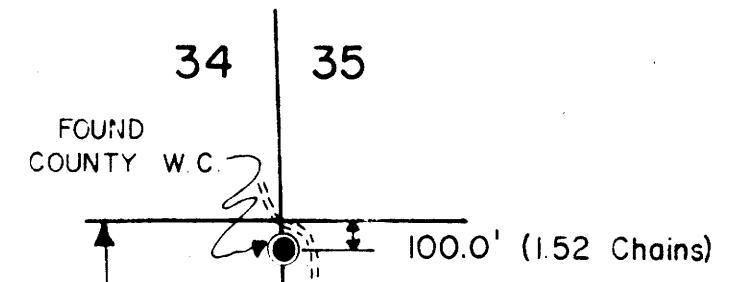
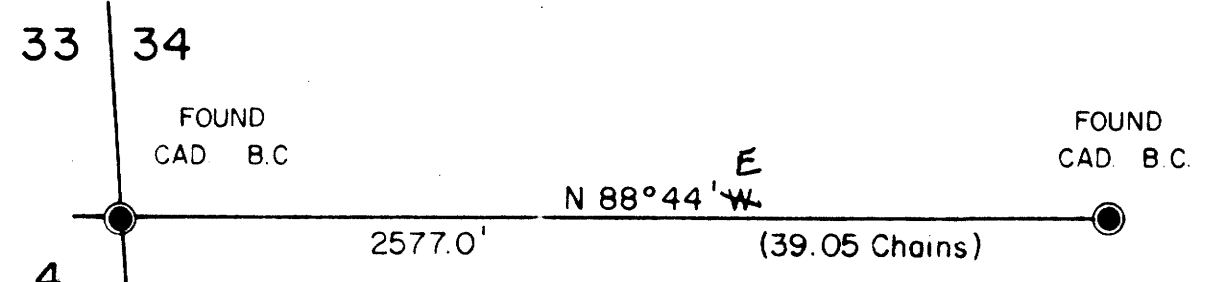
ADMINISTRATIVE SURVEY

FILED *th*
RECEIVED *th*

NOV 26 1979

COUNTY SURVEYOR
COUGLAS COUNTY, ORE.

MAP FILE *N.B. 1-7*



SEC. 3
B.L.M.

SET 7/8 in. IP, 24 in. LG,
18 in. IN GROUND FROM
WHICH

A SNAG, 30 in. DIA., BEARS
DUE EAST, 5.0 ft

A SNAG, 26 in. DIA., BEARS
N 76° W, 21.0 ft

THIS PLAT REPRESENTS AN ADMINISTRATIVE SURVEY OF
T. 32 S., R. 7 W., SEC. 3, WILLAMETTE MERIDIAN. BEARINGS
ARE DETERMINED BY DIRECT OBSERVATION OF THE SUN AND
ALL B.L.M. PROPERTY LINES ARE TAGGED REFERENCE
TREE DISTANCE IS TO FACE OF TREE.

This reproduction made on
an Oce 7100. 10/15/93

COUNTY SURVEYORS FILE DATA
DO NOT REMOVE FROM OFFICE

LEGEND

- CORNERS FOUND
- CORNERS SET
- DIRT ROAD



U.S. BUREAU OF LAND MANAGEMENT

ROSEBURG DISTRICT OREGON

DRAWN BY PAUL BENTLEY DATE 1-5-79

SURVEYED BY ALEX TUPYI DATE MAY 1978

APPROVED BY *Bruce P. Chamber* DATE 7-2-79
DISTRICT ENGINEER

MAP FILE *N.B. 1-7*