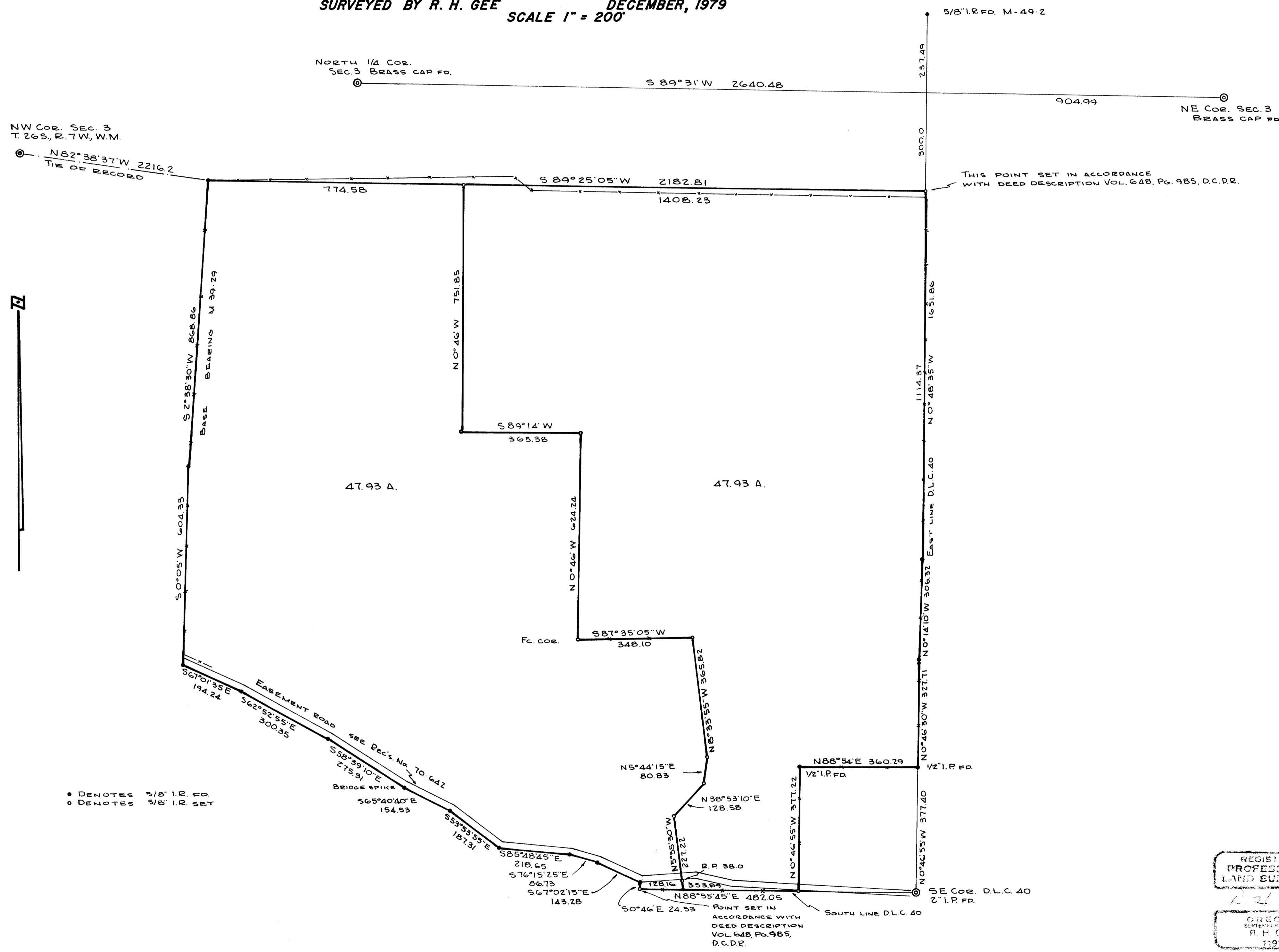


PROPERTY INFORMATION WILL BE
 DELETED FROM OFFICE

SURVEY IN NORTH 1/2 SECTION 3, T. 26 S., R. 7 W., W. M.
SURVEYED FOR PATRICK GUILLEN AND CARL SINDERMAN
 SURVEYED BY R. H. GEE DECEMBER, 1979
 SCALE 1" = 200'

FILED
 RECEIVED
 JAN. 14, 1980
 COUNTY SURVEYOR
 DOUGLAS COUNTY, ORE.

MAP FILE M 81-63



• DENOTES 5/8" I.R. FD.
 ○ DENOTES 5/8" I.R. SET

THIS POINT SET IN ACCORDANCE
 WITH DEED DESCRIPTION VOL. 648, Pg. 985, D.C.D.R.

POINT SET IN
 ACCORDANCE WITH
 DEED DESCRIPTION
 VOL. 648, Pg. 985,
 D.C.D.R.

REGISTERED
 PROFESSIONAL
 LAND SURVEYOR
 R. H. GEE
 OREGON
 SEPTEMBER 24, 1977
 R. H. GEE
 1191

MAP FILE M 81-63