

TOWNSHIP 31 SOUTH, RANGE 6 WEST, OF THE WILLAMETTE MERIDIAN, OREGON

ADMINISTRATIVE SURVEY

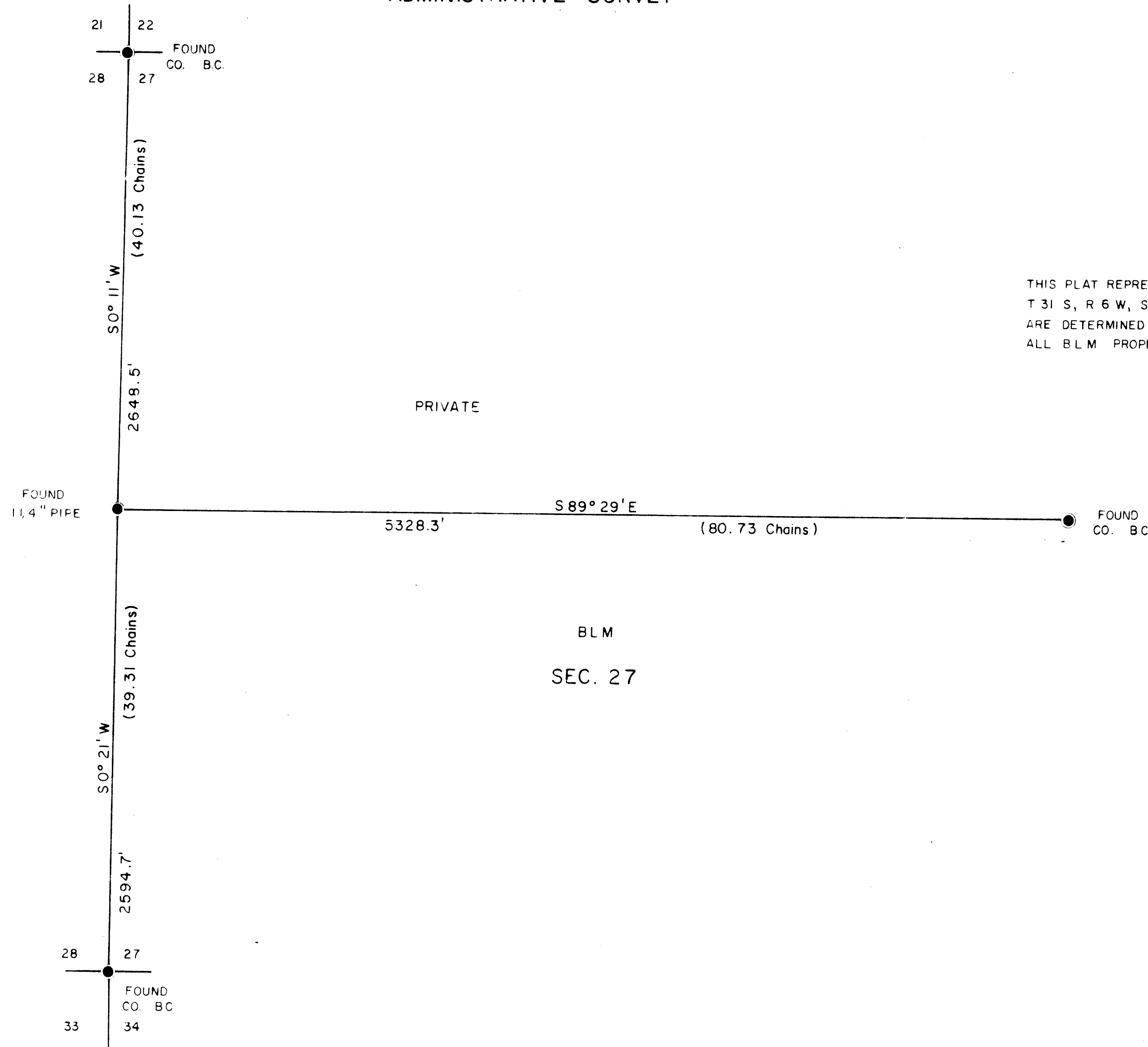
FILED *dh*
RECEIVED *dh*

NOV 26 1979

COUNTY SURVEYOR
LOGGLAS COUNTY, ORE.

MAP FILE *M31-6*

THIS PLAT REPRESENTS AN ADMINISTRATIVE SURVEY OF
T 31 S, R 6 W, SEC. 27, WILLAMETTE MERIDIAN. BEARINGS
ARE DETERMINED BY DIRECT OBSERVATION OF THE SUN AND
ALL BLM PROPERTY LINES ARE TAGGED.



This reproduction made on
an Oce' 7100. 10/15/93

COUNTY SURVEYORS FILE DATA
DO NOT REMOVE FROM OFFICE

LEGEND

- CORNERS FOUND
- CORNERS SET



U.S. BUREAU OF LAND MANAGEMENT
ROSEBURG DISTRICT OREGON
DRAWN BY PAUL BENTLEY DATE 12-1-78
SURVEYED BY ALEX TUPYI DATE JULY 1978
APPROVED BY *Bruce P. Chamber* DATE 7-2-79
DISTRICT ENGINEER