

# SURVEY in Sections 22, 23, 26 & 27, T26S, R5W, W.M.

For: Dixon Davis  
 By: BHW Engineering & Surveying  
 1205 S.E. Court  
 Roseburg, Oregon

COUNTY SURVEYORS FILE DATA  
 DO NOT REMOVE FROM OFFICE

Scale: 1" = 100'  
 November 1979

FILED  
 RECEIVED  
 COUNTY SURVEYOR  
 DOUGLAS COUNTY, OREGON

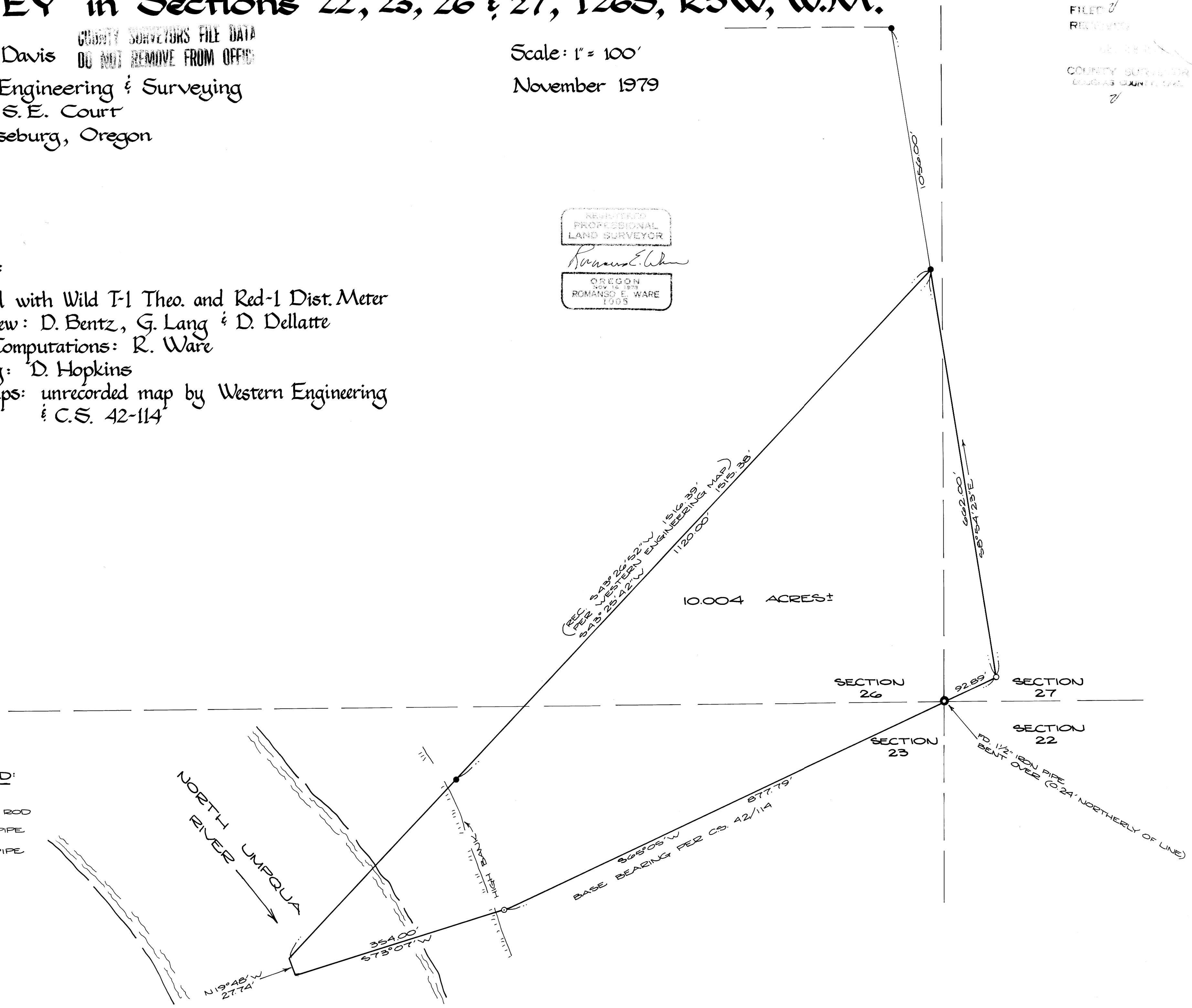
REGISTERED  
 PROFESSIONAL  
 LAND SURVEYOR

*Romanso E. Ware*

OREGON  
 NOV. 16, 1979  
 ROMANSO E. WARE  
 1005

## Narrative:

Surveyed with Wild T-1 Theo. and Red-1 Dist. Meter  
 Field Crew: D. Bentz, G. Lang & D. Dellatte  
 Office Computations: R. Ware  
 Drafting: D. Hopkins  
 Ref. Maps: unrecorded map by Western Engineering  
 & C.S. 42-114



MAP FILE