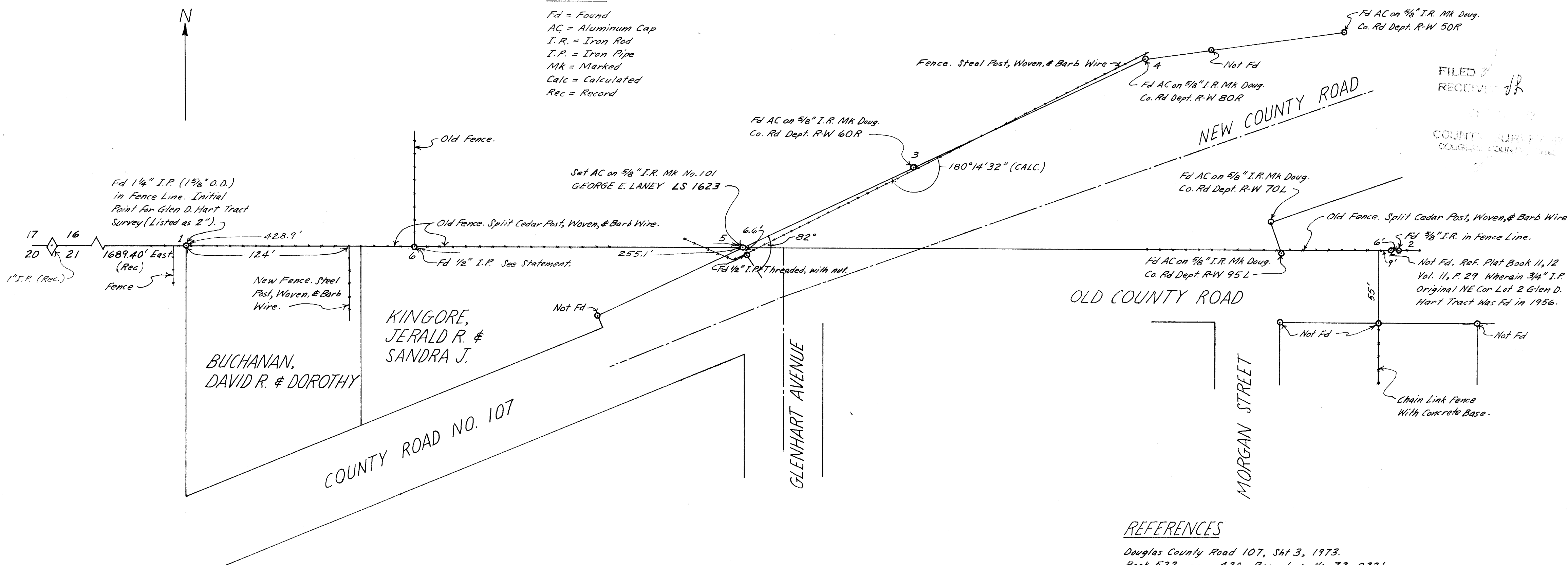


LEGEND

Fd = Found
 AC = Aluminum Cap
 I.R. = Iron Rod
 I.P. = Iron Pipe
 MK = Marked
 Calc = Calculated
 Rec = Record



FILED
 RECEIVED
 COUNTY SURVEYOR
 DOUGLAS COUNTY, OREGON

PROCEDURE

Set transit at point no. 1 and established sight line to point no. 2. Set transit at point no. 3 and sighted on point no. 4. Turned horizontal angle and established sight line. Set corner at intersection of sight lines, point no. 5.

DISCUSSION

Assumed point no. 2 to be on a projection of east-west property line. Did not find NE corner of Glen D. Hart tract or lot corner south across street from it. However, a chain link fence set in concrete started at point where corner was expected to be found. Distance from start of chain link fence to centerline of road is 30 feet. Road R-W is recorded as 60 feet. Measured northerly 55 feet from start of chain link fence using same for alignment. Old fence was at this distance. Measured east along fence line 9 feet. Searched for 3/4" I.P., but did not find. However, 6 feet farther east in fence line found 5/8" I.R. painted orange on top. Evidence indicates fence has been in place a long time. Split cedar heart posts are rotting and many have tipped over. Assumed fence to be along original property line which made 5/8" I.R. good for sight point. With transit at initial point to Glen D. Hart tract and using this 5/8" I.R. for a sight point a cleared line on a hillside several miles distant is visible in the transit scope field of view and is approximately 1/4 the field of view width south of projected line. Using same procedure a line through 1/2" I.P. with nut located near set point no. 5 projected far south of this cleared line.

STATEMENT

An 18 inch oak tree with blaze and writing was about 2 feet south of fence corner post and in line with fence running northerly. Blaze on north side. I don't remember any of the numbers or letters. Wire was wrapped around the tree and corner post tying them together. I kept a block of salt by the tree. It dissolved in the rain and apparently killed the tree. The tree later blew over in a windstorm. I placed the 1/2 inch iron pipe at the south base of the post in about 1968 to preserve the corner witnessed by the tree. I have lived on this property since 1958. This statement was made on November 24, 1979.

David R. Buchanan

David Ralph Buchanan 12/16/79 Date

He, David Ralph Buchanan, had a map dated February 1961 of the City of Winston prepared by James R. Daugherty, 2339, and pointed out on it the corner the tree was witnessing. This 1/2" I.P. is identified as point no. 6 on this plat.

George E. Laney 12-16-79
 George Eugene Laney Date

REGISTERED
 PROFESSIONAL
 LAND SURVEYOR

OREGON
 SURVEYOR
 GEORGE E. LANEY
 1623

REFERENCES

- Douglas County Road 107, Sht 3, 1973.
- Book 522, page 430, Recorder's No. 73-8221
- Book 668, page 139, Recorder's No. 78-4120
- Warranty Deed, Vol 319, page 297, Recorder's No. 315801
- Plat Book Vol 3, page 25, Glen D. Hart Tract
- Plat Book 11, 12, Vol 11, page 29
- County Surveyor's Record, Vol 14, page 5728
- Map File M61-50
- Map File M62-6
- Map File 60-55, Recorder's No. 76-09129

Survey For: JERALD R. & SANDRA J. KING
 Property Located in Lot 1, Glen D. Hart Tract, City of Winston,
 NW 1/4, S21, T28S, R6W, WM.

Date of Survey: July 7, 1979
 Surveyed by: George E. Laney
 P.O. Box 225
 Camas Valley, OR 97416

SCALE: 1" = 50'

COUNTY SURVEYORS FILE
 TO NOT REMOVE FROM

M81-51