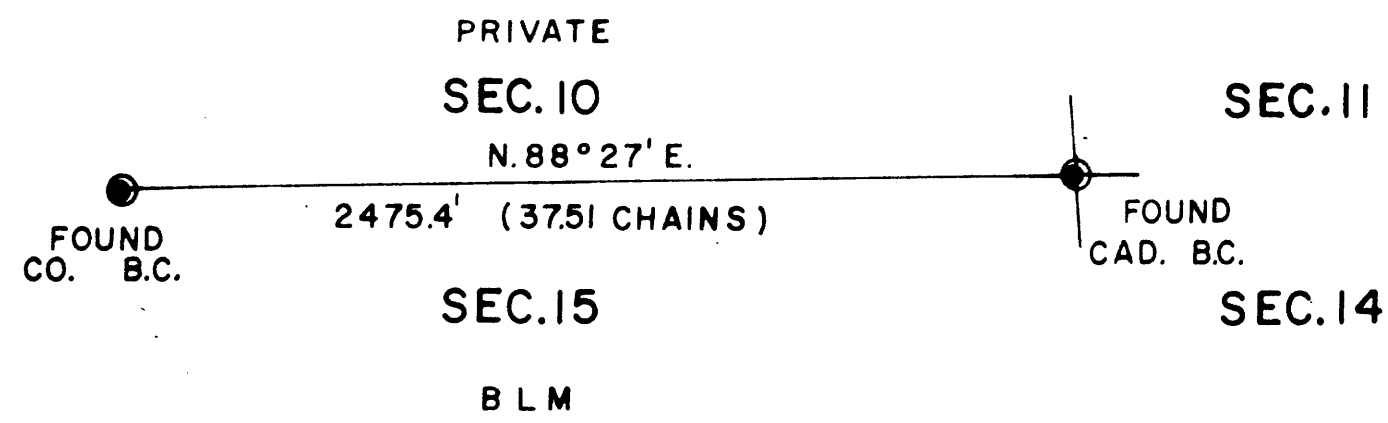


TOWNSHIP 30 SOUTH, RANGE 8 WEST, OF THE WILLAMETTE MERIDIAN, OREGON
ADMINISTRATIVE SURVEY

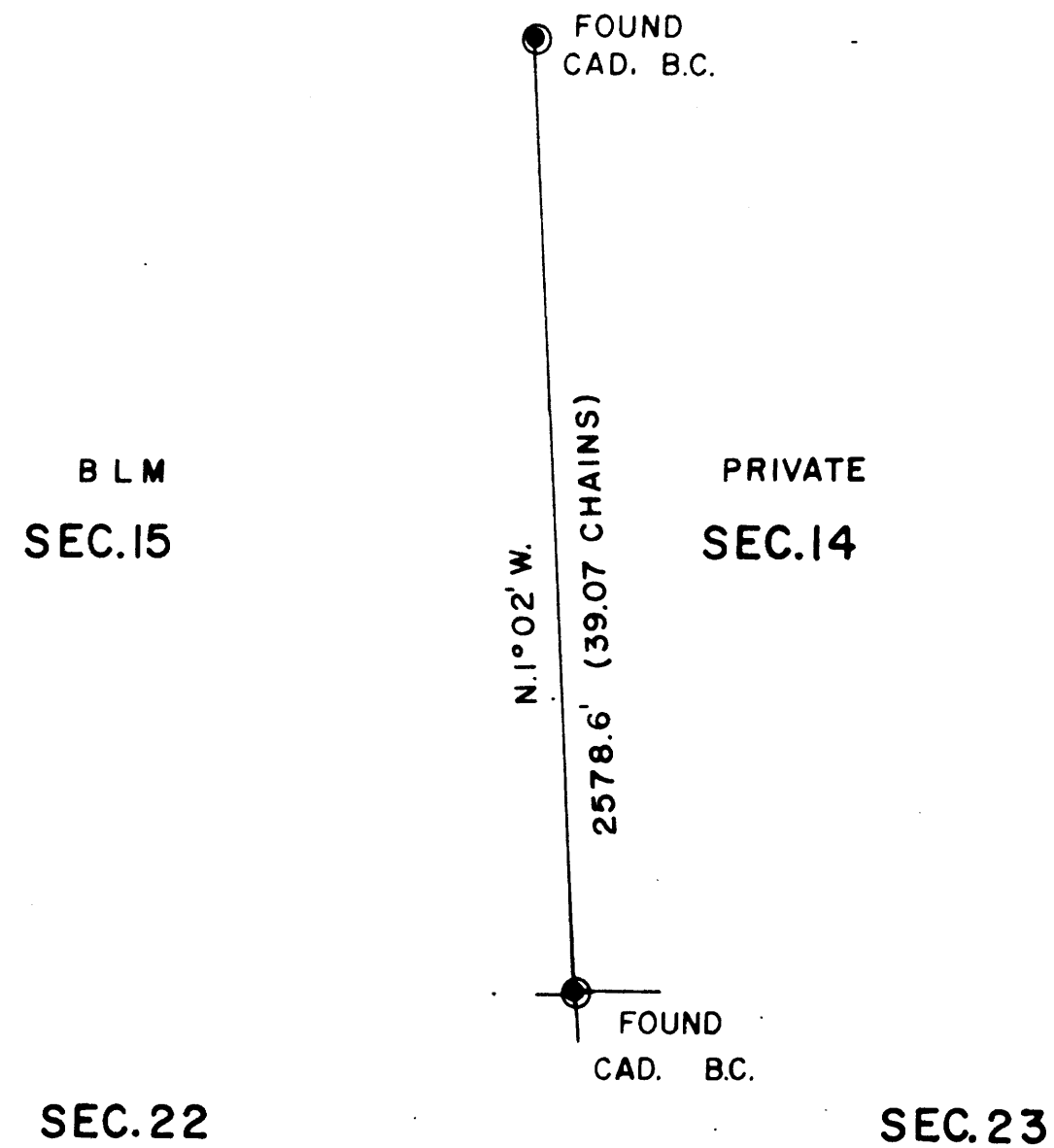
FILED *h*
RECEIVED *h*
NOV 26 1978
COUNTY SURVEYOR
DOUGLAS COUNTY, ORE.



THIS PLAT REPRESENTS AN ADMINISTRATIVE SURVEY OF T 30 S, R 8 W, SEC. 15, WILLAMETTE MERIDIAN. BEARINGS ARE DETERMINED BY DIRECT OBSERVATION OF THE SUN AND ALL B L M PROPERTY LINES ARE TAGGED.

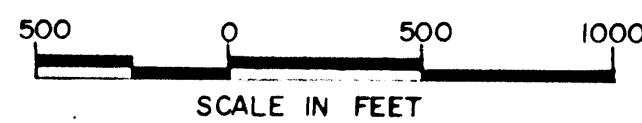
This reproduction made on an Oce' 7100. 10/15/93

COUNTY SURVEYORS FILE DATA
DO NOT REMOVE FROM OFFICE



LEGEND

● CORNERS FOUND



U.S. BUREAU OF LAND MANAGEMENT
ROSEBURG DISTRICT OREGON
DRAWN BY DAN GOESON DATE 11-15-78
SURVEYED BY ALEX TUPYI DATE MAY 1978
APPROVED BY *Bruce P. Chambers* DATE 7-2-79

MAP FILE M81-5

MAP FILE M81-5